



Haker Street
Chelsea, SW3

Maskells

An immaculately presented and fully modernised and extended 4 bedroom Victorian terrace house situated on a quiet residential street in Chelsea. The house is well located within walking distance of both Sloane Square and South Kensington underground stations. Energy Rating D.



Accommodation and Amenities

- PERFECTLY POSITIONED 4 BEDROOM HOUSE
- 2 RECEPTION ROOMS (ONE FORMAL, ONE FAMILY ROOM)
- LIMESTONE AND TEAK FLOOR THROUGHOUT
- LUTRON LIGHTING
- FULLY BESPOKE KITCHEN WITH SUB ZERO F/F
- INTEGRATED AUDIO SYSTEM
- GARDEN AND ROOF TERRACE
- CLOSE PROXIMITY TO SOUTH KENSINGTON AND SLOAN SQUARE

The property is offered in excellent condition throughout having been meticulously refurbished by the present owners and comes with rarely available access to Cadogan Square gardens (membership and access fees payable by the tenant). The house itself benefits from contemporary fixtures and fittings, including a modern kitchen with range cooker and Sub Zero fridge freezer, limestone and teak flooring throughout, underfloor heating, Lutron lighting, double glazing, built in wardrobes in all principle bedrooms and marble bathroom..

The accommodation comprises: double reception room, eat-in kitchen, second reception/family room, utility room, master bedroom with en suite bathroom, two further double bedrooms, single bedroom/office, family bathroom, storage room and private rear garden and terrace.

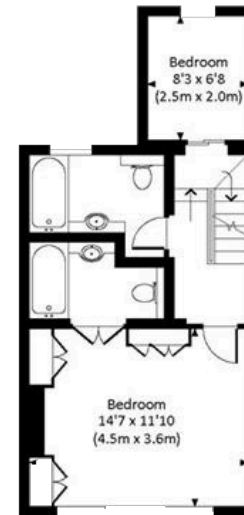
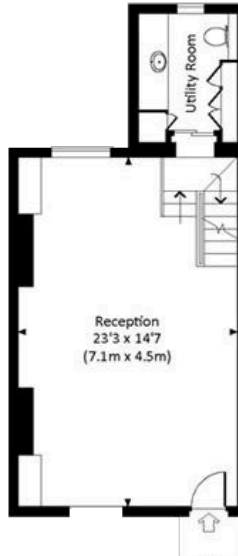
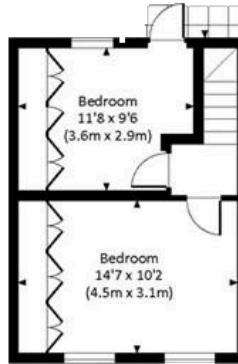
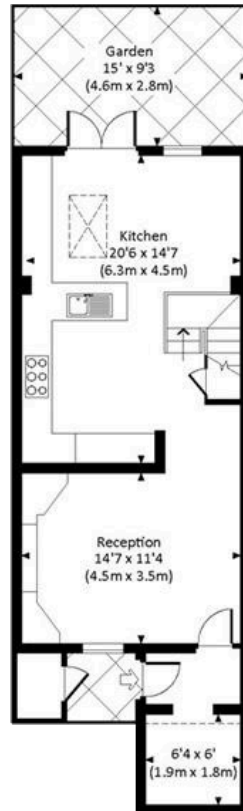
Hasker Street Street is 0.5 miles to South Kensington underground station (District, Circle and Piccadilly lines), 0.5 miles to Sloane Square underground station (District and Circle lines) and 0.6 miles to Knightsbridge underground station (Piccadilly lines).

All potential tenants should be advised that administration fees may be applicable when renting a property. Please contact us for more details of these charges



APPROXIMATE FLOOR AREA

152.7 Sq M 633 Sq Ft



TERMS

Asking Price: £1,995 Per Week (£8,645 PCM)

UNFURNISHED

Council Tax Band: H

Local Authority: Royal borough of Kensington and Chelsea

EPC: D

Let's talk Mortgages Maskells has partnered with CBM Financial, an independent mortgage broker, directly authorised with specialist knowledge and whole of market access. **CLICK HERE**
mortgages@maskells.com

Your home may be repossessed if you do not keep up repayments on your mortgage



@maskellsea

Maskells

71 Walton Street, London SW3 2HT

Tel: 0207 581 2216

sales@maskells.com

lettings@maskells.com

[maskells.com](https://www.maskells.com)



We wish to advise prospective purchasers that we have prepared these sales particulars as a rough guide. We have not carried out a detailed survey or tested the services, appliances or specific fittings. Measurements are approximate.