



# WALTON STREET, CHELSEA SW3

£515 Per Week (£2,231.66 PCM)

## FEATURES

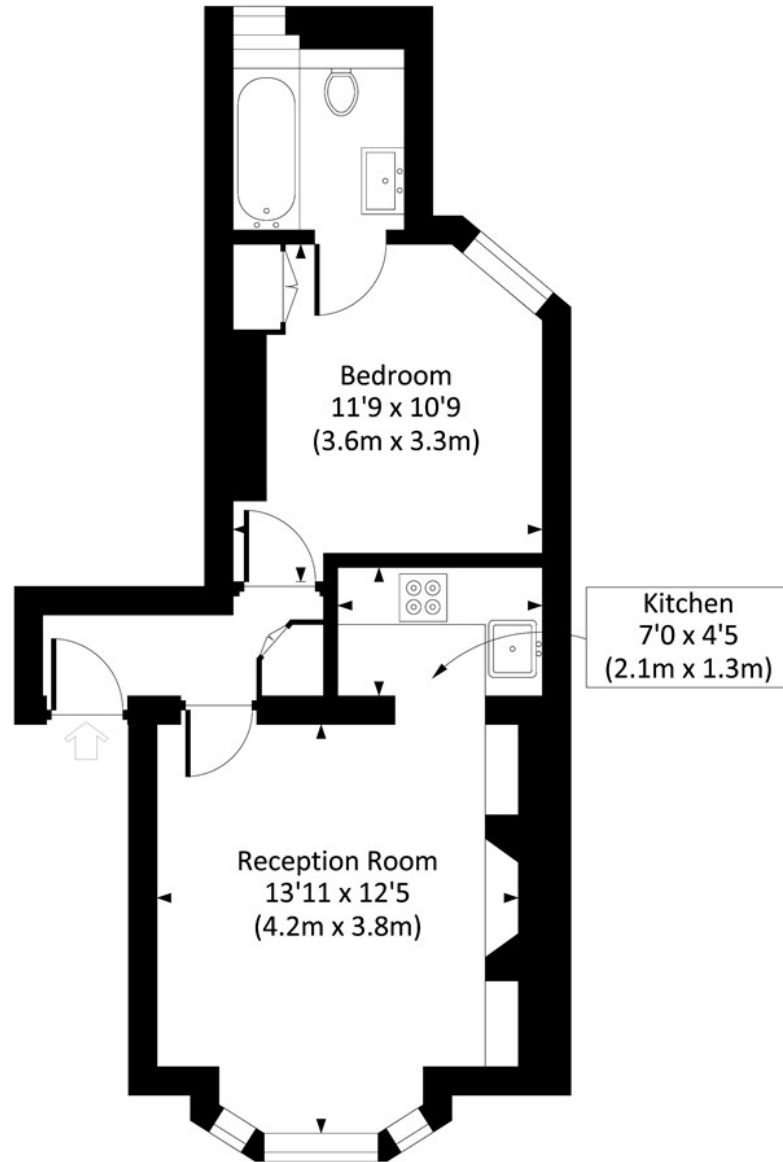
- Bright and charming raised ground floor 1 bedroom flat
- Newly redecorated throughout with new carpets
- 0.4 miles from South Kensington underground station
- Situated in a secure ported building
- Open plan kitchen and reception space with large bay window
- 0.5 miles from Sloane Square



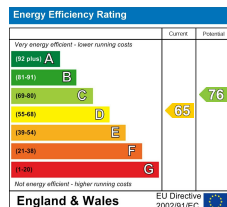
**Maskells**

# WALTON STREET, SW3

Approx. gross internal area  
398 Sq Ft. / 37 Sq M.



FIRST FLOOR



All measurements have been made in accordance with RICS code of Measuring Practice which are approximate only and only for illustrative purposes. For the avoidance of doubt, Dowling Jones Design shall not be liable for any reliance on these measurements. © 2022 www.dowlingjones.com 020 7610 9933

Call us on

0207 581 2216

[lettings@maskells.com](mailto:lettings@maskells.com)

[www.maskells.com](http://www.maskells.com)

Council Tax Band: E

A bright and charming raised ground floor 1 bedroom apartment, situated in a secure portered mansion building on Walton Street, a short walk from South Kensington underground station, Sloane Square and King's Road.

The apartment has been newly redecorated throughout with new carpets laid, and enjoys a large open plan kitchen and reception space with a large bay window and period features. The double bedroom has built in storage and the bathroom has a shower over the bath. EPC D.

Walton Street is 0.4 miles from South Kensington (District, Circle and Piccadilly lines) and Knightsbridge (Piccadilly Line) underground stations, and is a only short walk from the shopping and entertainment amenities of King's Road.

All potential tenants should be advised that administration fees may be applicable when renting a property. Please contact us for more details of these charges.

Agents Note: Whilst every care has been taken to prepare these particulars, they are for guidance purposes only. All measurements are approximate and are for general guidance purposes only and whilst every care has been taken to ensure their accuracy, they should not be relied upon and potential buyers are advised to recheck the measurements.

