



Ovington Court  
Knightsbridge, SW3



This is an immaculately presented 2 bedroom 2 bathroom apartment positioned on an upper floor (6th floor with a lift) of a highly sought after residential block in Knightsbridge which benefits from a porter.



### Accommodation and Amenities

- 2 BEDROOM 2 BATHROOM APARTMENT CIRCA 900 SQ FT
- SECURE PORTERED BUILDING
- LIFT
- AIR-CONDITIONING
- HARDWOOD FLOORING
- MARBLE BATHROOMS
- SUPERB LOCATION CLOSE TO HARRODS AND HYDE PARK
- 0.4 MILES TO BOTH SOUTH KENSINGTON AND KNIGHTSBRIDGE UNDERGROUND





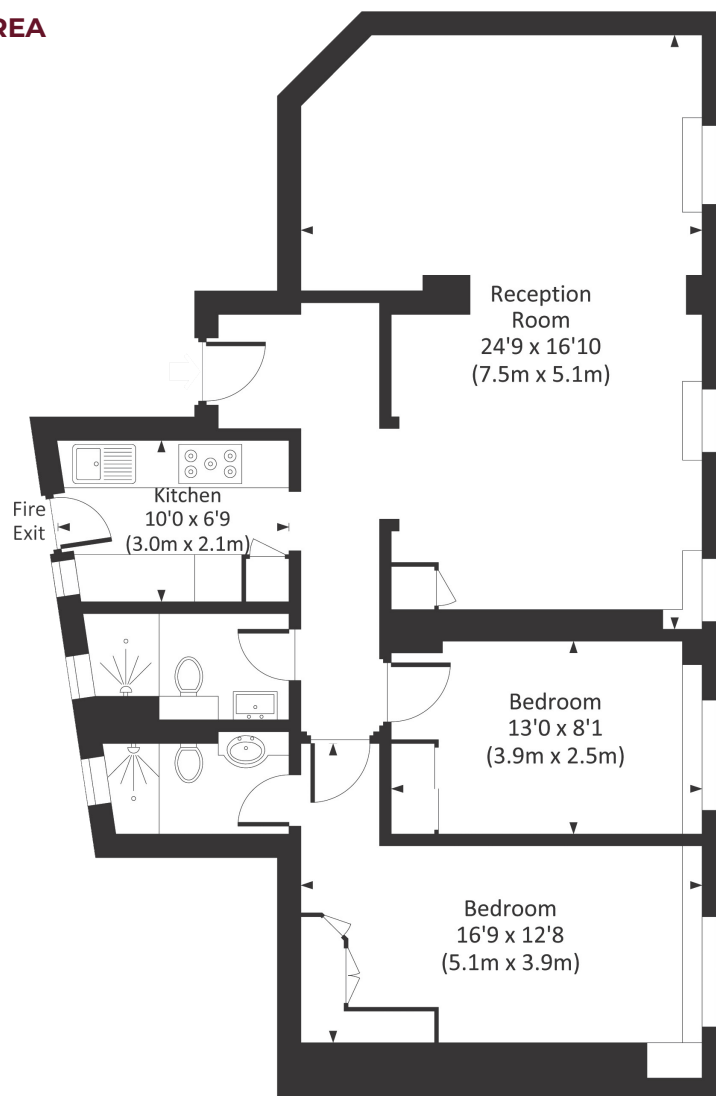
The apartment has been subject to an extensive refurbishment and offers well balanced reception space with sleeping accommodation comprising a master bedroom with en-suite bathroom and a second double bedroom and second shower room. Further benefits include air-conditioning, wide plank hardwood flooring and marble bathrooms.

Ovington Court is positioned at the top of Ovington Square and sits on the border between Chelsea and Knightsbridge. Harrods is in the immediate vicinity, as is the world class shopping, bars and restaurants of Knightsbridge, Mayfair and beyond. EPC rating C.



## APPROXIMATE FLOOR AREA

80.7 sq m / 869 sq ft



Sixth Floor

## TERMS

**Asking Price** £1,250 Per Week (£5,417 PCM)

**Furnished**

**EPC C**

**Council Tax Band H**

**Local Authority** The Royal Borough of  
Kensington and Chelsea



@maskellsea

# Maskells

71 Walton Street, London SW3 2HT

Tel: 0207 581 2216

[sales@maskells.com](mailto:sales@maskells.com)

[lettings@maskells.com](mailto:lettings@maskells.com)

[maskells.com](https://www.maskells.com)