



Stanhope Place
London, W2



A bright and
well-proportioned
second floor apartment
set within an elegant
period building
moments from Hyde
Park.





STANHOPE PLACE



Extending to approximately 684 sq ft, the apartment offers a generous reception/dining room with high ceilings, wood flooring and a feature fireplace, creating an inviting space for both relaxing and entertaining. A separate kitchen sits just off the reception room and is fitted with a good range of units, integrated appliances and worktop space.

There are two bedrooms, both with fitted wardrobes, and two bathrooms. The principal bedroom is particularly peaceful, positioned away from the main living space and enjoying a quiet outlook – a rare advantage in such a central London location.

Large sash windows allow for excellent natural light throughout, with pleasant views over the surrounding period buildings and tree-lined streets.



Stanhope Place has recently benefited from the closure of through traffic, giving the street a quieter, more residential feel while remaining exceptionally well connected. Marble Arch Underground Station, served by the Central Line, is nearby, together with numerous bus routes providing easy access across London. Hyde Park, Connaught Village, Oxford Street and the West End are all within easy reach.

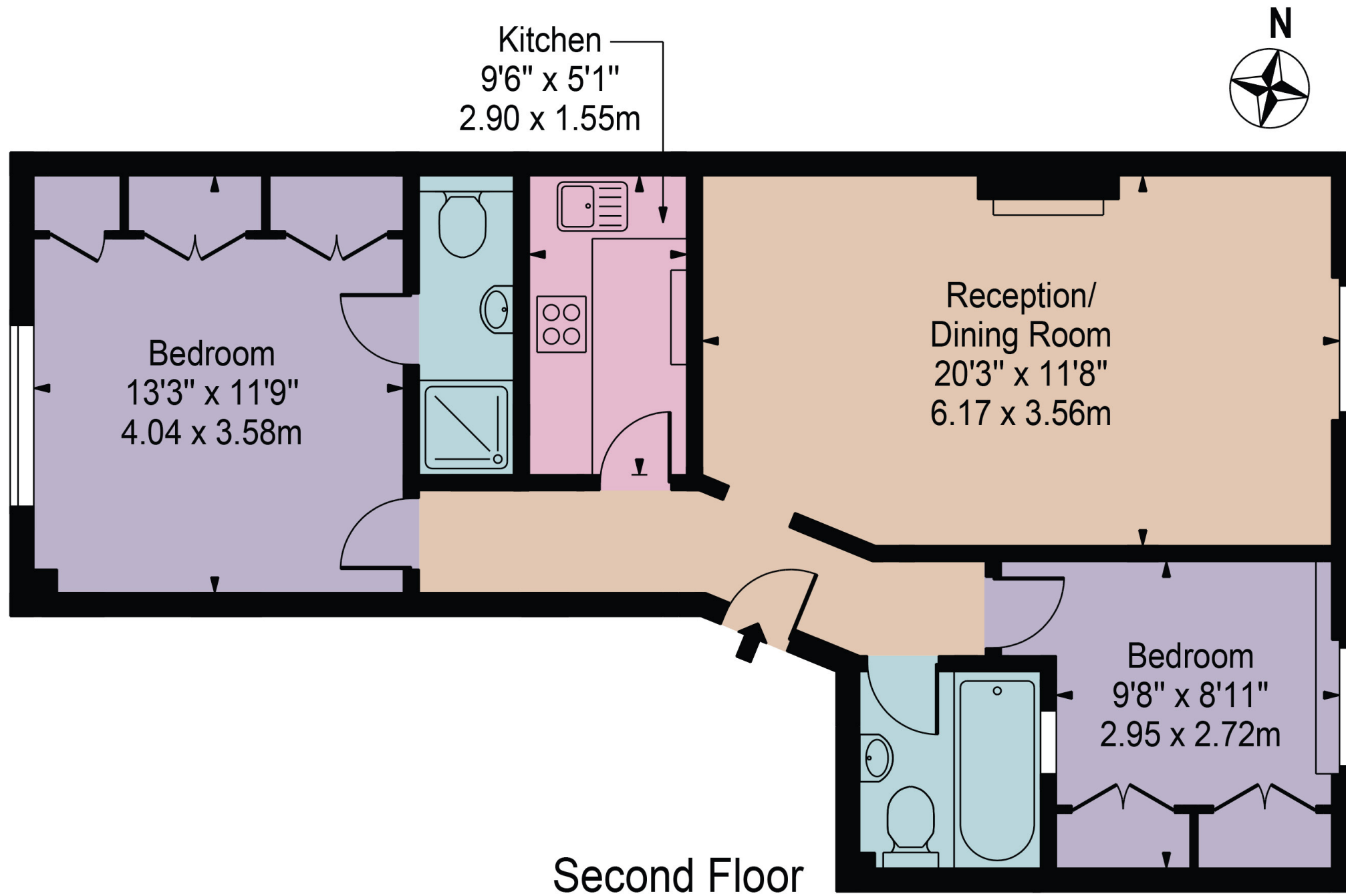




- Second floor apartment
- Approx. 684 sq ft
- Two bedrooms
- Two bathrooms
- Generous reception/dining room
- Separate fitted kitchen
- Quiet principal bedroom with fitted wardrobes
- High ceilings, wood flooring and period features
- Moments from Hyde Park, Connaught Village and Marble Arch Station







STANHOPE PLACE

ASKING PRICE

£950,000

TENURE

Leasehold - approx. 148 years
remaining

SERVICE CHARGE

£7,900 per annum (includes heating)

GROUND RENT

Peppercorn

LOCAL AUTHORITY

Westminster

COUNCIL TAX BAND

F

EPC RATING

D



71 Walton Street, London, SW3 2HT

Tel: 020 7581 2216

sales@maskells.com

lettings@maskells.com

maskells.com