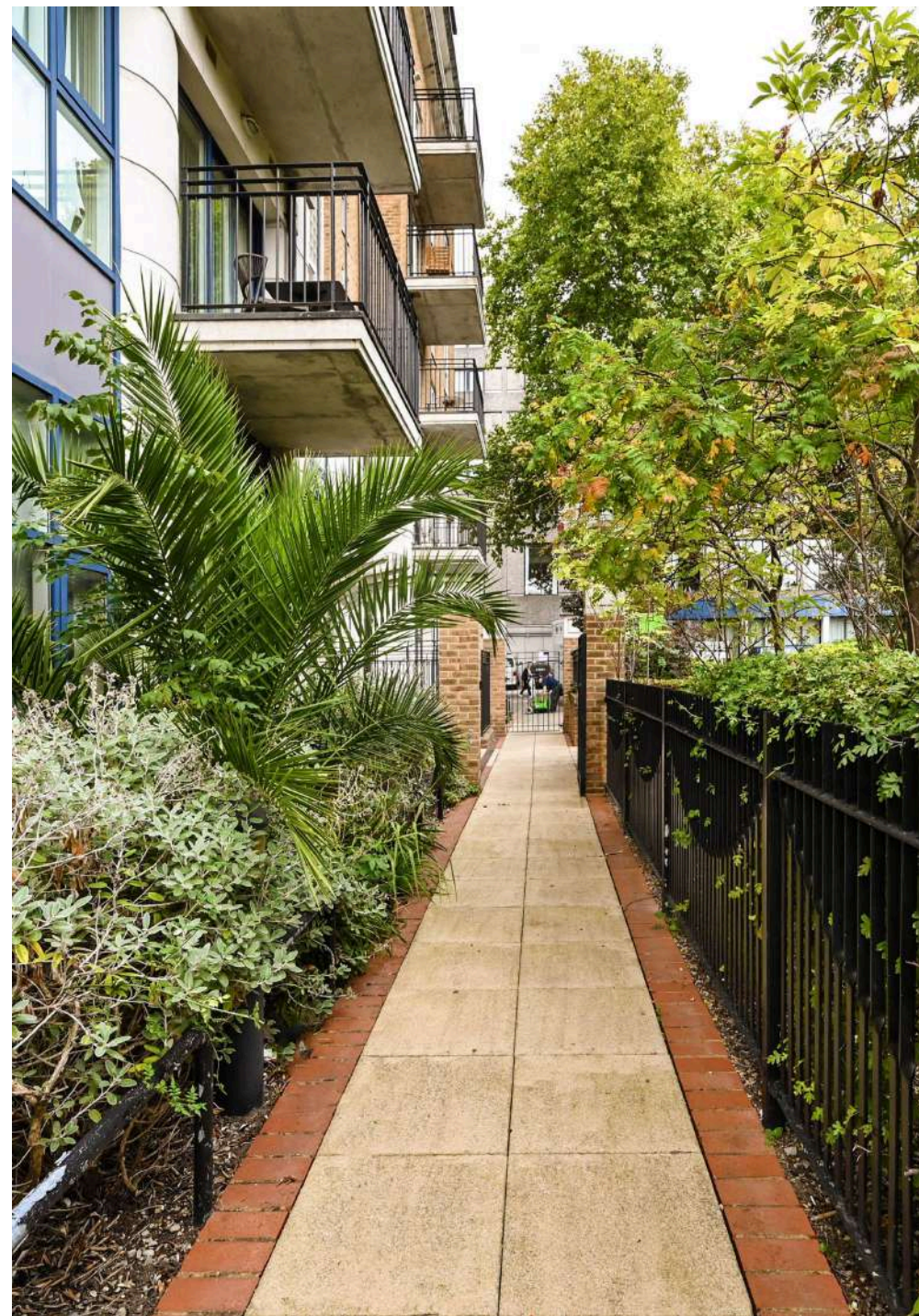




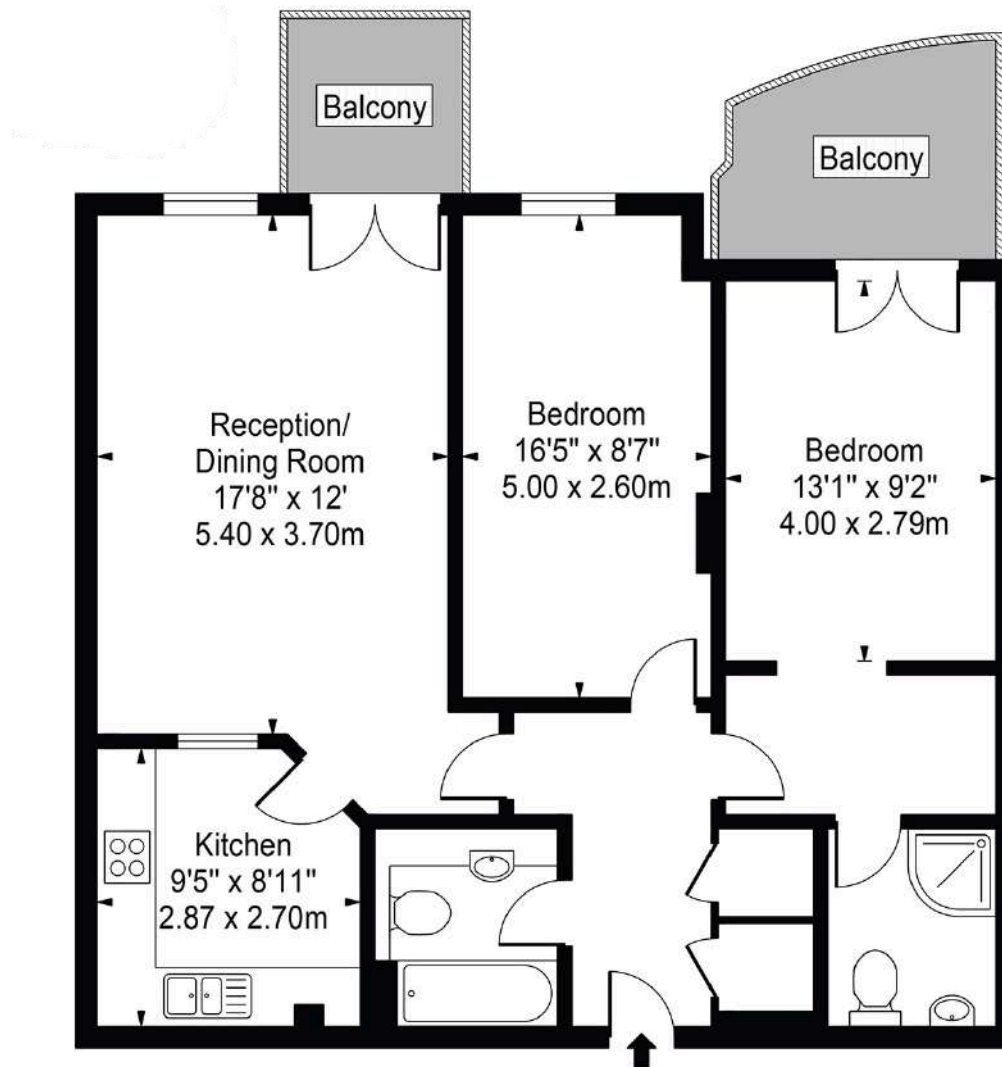
A well proportioned, contemporary and bright two-bedroom flat situated on the first floor of this popular purpose-built development on Kensington High Street. The property benefits from a bright reception/dining room with French windows opening on to a private balcony overlooking the quiet and tree-lined Russell Road. There is a well-equipped separate kitchen, a generously proportioned master bedroom with an en-suite shower room, a second double bedroom and a family bathroom. The master bedroom has the added benefit of a further private terrace. This hugely popular block has a beautiful communal garden, lift, daily caretaker and an underground parking space and is popular with first time buyers, investors and owner occupiers.

-
- Popular portered block
 - Private underground parking
 - Two private balconies
 - Prime W14 location





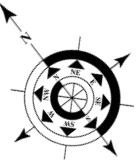




FIRST FLOOR

APPROXIMATE FLOOR AREA

Internal Area - 829 Sq Ft / 77.02 Sq M



Asking Price: £775,000

Tenure: Leasehold 999 years from 31 October 1997

Service Charge: £4,139.94

Ground Rent: £521.24

Local Authority: Royal Borough of Kensington and Chelsea

Council Tax Band: G

Maskells

71 Walton Street
London SW3 2HT Tel:
0207 581 2216
sales@maskells.com
lettings@maskells.com
maskells.com