



Cranmer Court
Chelsea SW3

A fantastic 1-bedroom apartment on the 7th floor (with lift), offering outstanding views and a good layout, in a sought – after building with portage.



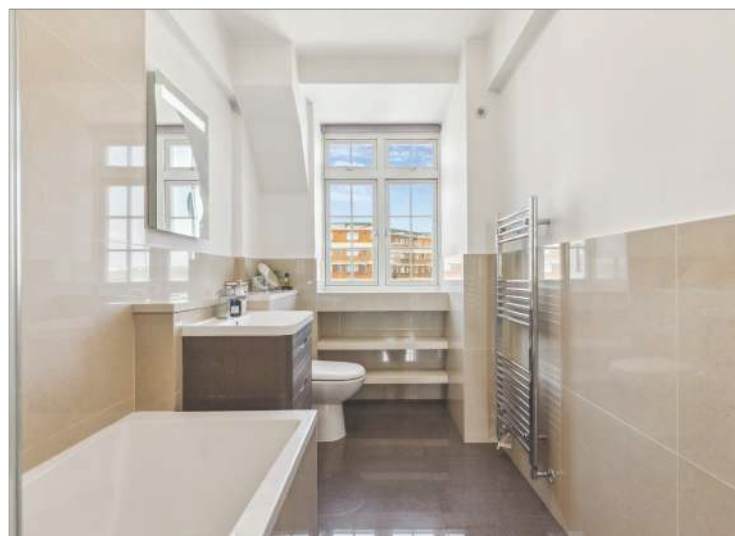
Accommodation and Amenities

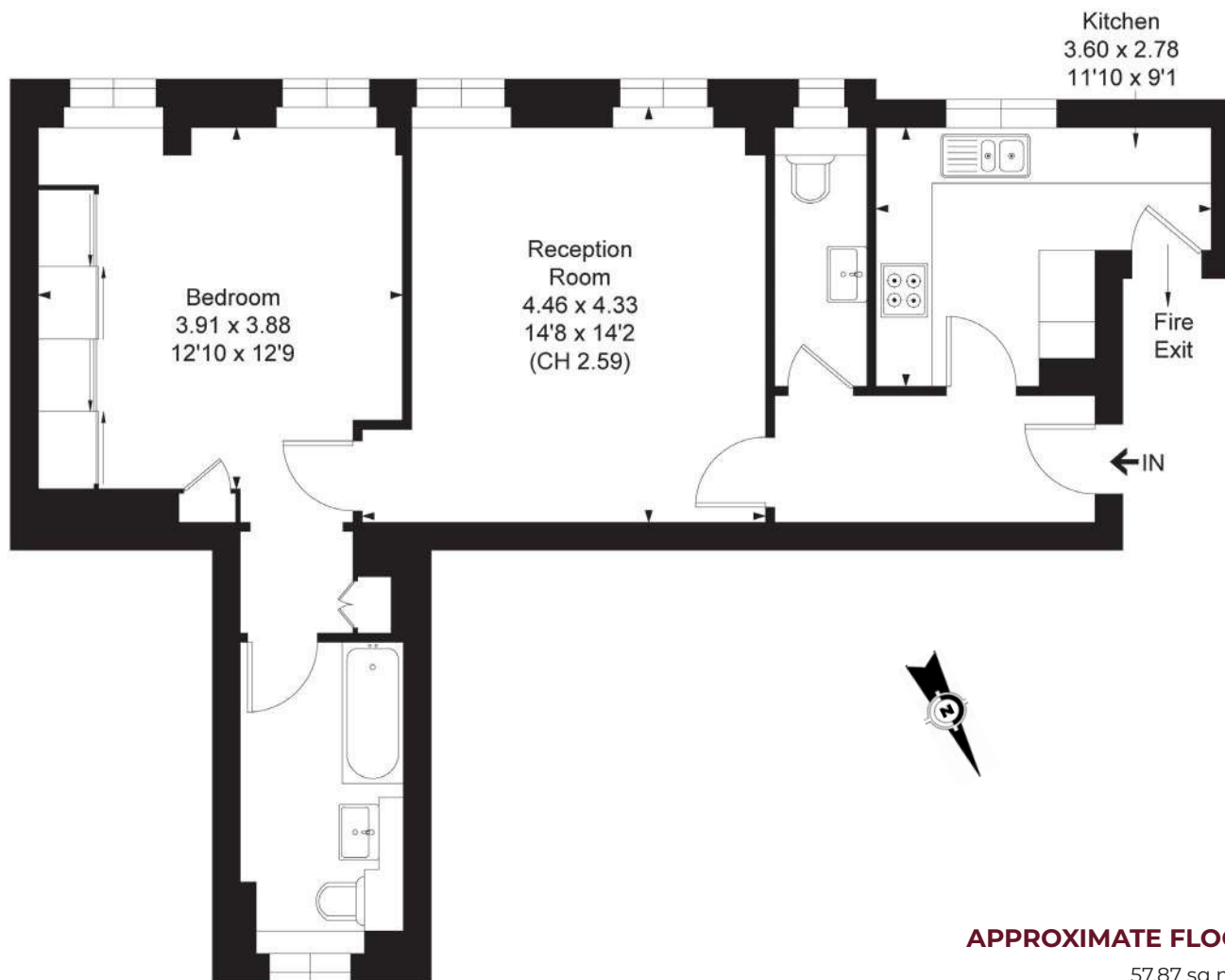
- EXCELLENT CONDITION
- LIFT
- PORTER
- WONDERFUL VIEWS

The flat is entered into a hallway and to the right is a fully fitted kitchen with east facing views. Adjacent is a well-located guest cloakroom. Centrally located is a reception room with two windows meaning that this space is very bright. To the far end is a double bedroom with built-in cupboards and again, two east facing windows. This room also benefits from an en-suite bathroom. The flat also benefits from 1 storage rooms on the top floor, additional storage rooms can also be purchased upon separate negotiation.



Cranmer Court is a purpose-built block of flats in the heart of Chelsea which benefits from portage and an excellent location. Within a short walk are the world – class amenities to be found in Chelsea, Knightsbridge and South Kensington, as well as easy access to excellent transport links.





Seventh Floor

APPROXIMATE FLOOR AREA

57.87 sq m / 623 sq ft

TERMS

Asking Price £825,000

Tenure Leasehold, expires April 2141
therefore approximately 116 years remain

Service Charge TBC

Ground Rent TBC

EPC E

Council Tax Band F

Local Authority The Royal Borough of
Kensington and Chelsea

Let's talk Mortgages Maskells has partnered
with CBM Financial, an independent mortgage broker,
directly authorised with specialist knowledge and
whole of market access. **CLICK HERE**
mortgages@maskells.com

Your home may be repossessed if you do not keep up
repayments on your mortgage



@maskellsea

Maskells

71 Walton Street, London SW3 2HT

Tel: 0207 581 2216

sales@maskells.com

lettings@maskells.com

maskells.com

