



Kings Tower

Chelsea Creek, SW6





An outstanding 28th floor flat with commanding views over the London skyline.

The flat is presented in turnkey condition and offers some of the highest standards of living. The building benefits from access to The Halcyon Club which is a 31st floor skyline club with panoramic views, as well as residents cinema's, 24 hour concierge, fitness club with pool, steam and sauna rooms, and a gym.

King's Tower is part of the Chelsea Creek development, a world-class offering within easy reach of Chelsea and Imperial Wharf station is close by.



-
- Turnkey
 - Outstanding Residents Amenities
 - 24 Hour Concierge
 - Skyline views



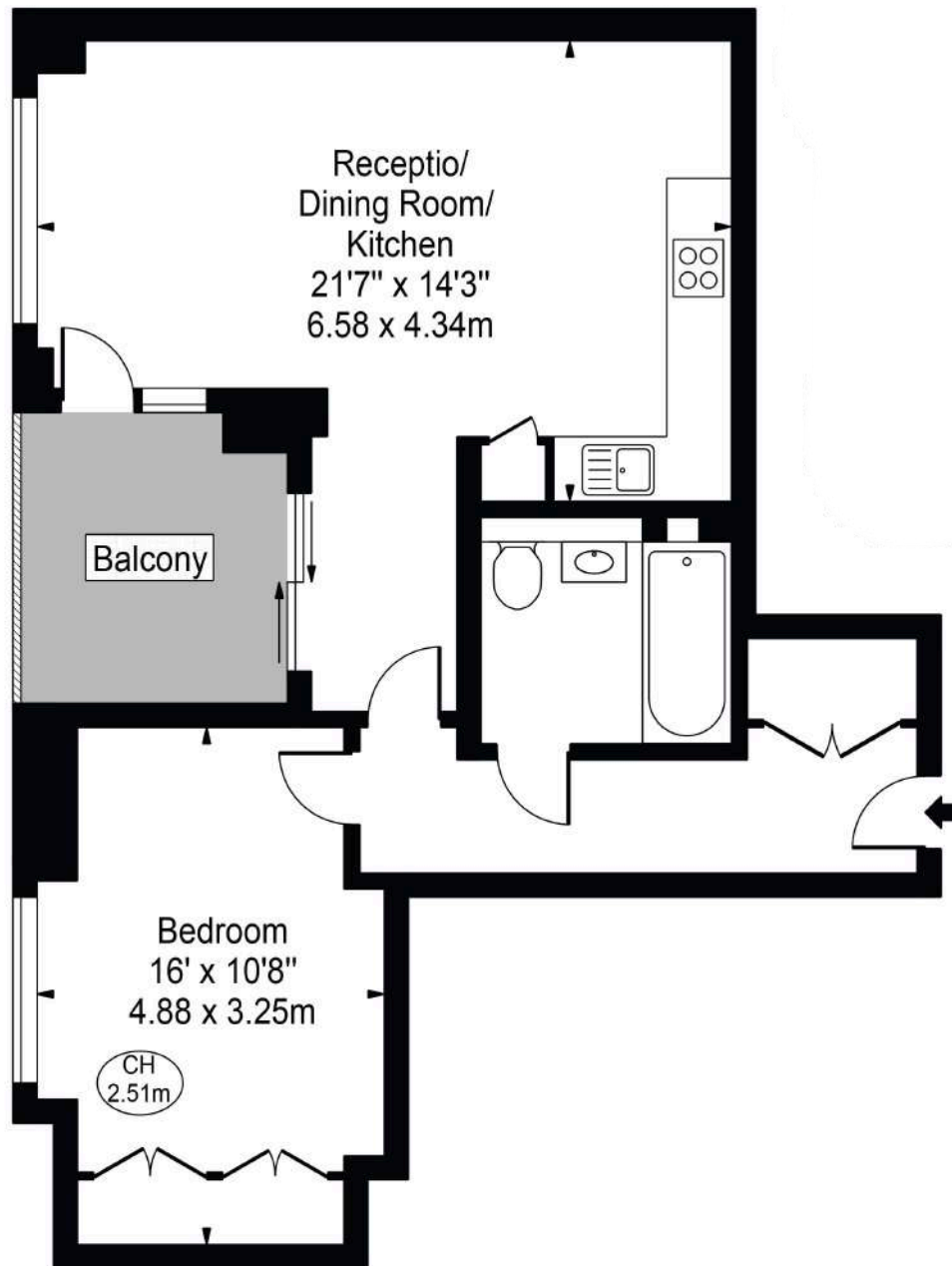
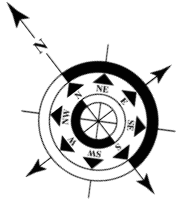




The Halcyon Club



Approx. Gross Internal Area
56.86 Sq m (612 Sq ft)



Twenty Eighth Floor

Asking Price: £850,000

Tenure: Leasehold, 999 years from 1st June 2010

Service Charge: £6,028 perm annum

Ground Rent: £480 per annum

Local Authority: Hammersmith and Fulham

Council Tax Band: E

Let's talk Mortgages

Maskells has partnered with CBM Financial, an independent mortgage broker, directly authorised with specialist knowledge and whole of market access.

CLICK HERE

mortgages@maskells.com

Your home may be repossessed if you do not keep up repayments on your mortgage



@maskellsea

Maskells

71 Walton Street

SW3 2HT

0207 581 2216

Sales@maskells.com