



Bulls Gardens
Chelsea, SW3

A truly unique link-detached two bedroom house quietly tucked away behind Walton Street, a short walk from the shopping and transport amenities of Chelsea and Knightsbridge.

Please note, photos as previously dressed. The property is now vacant.



Accommodation and Amenities

- LINK DETACHED HOUSE
- OVER THREE FLOORS
- VAULTED MASTER BEDROOM
- ROOF TERRACE

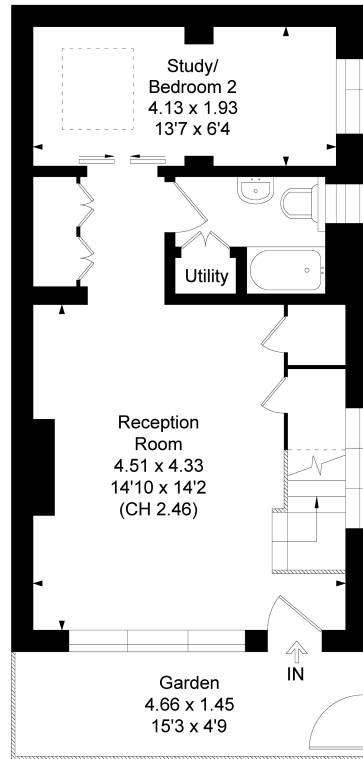


The house is laid out over three floors with great entertaining space and a vaulted master bedroom. Bull's Gardens is situated at the end of Donne Place, a quiet cul de sac which runs off Draycott Avenue close to the junction with Walton Street.

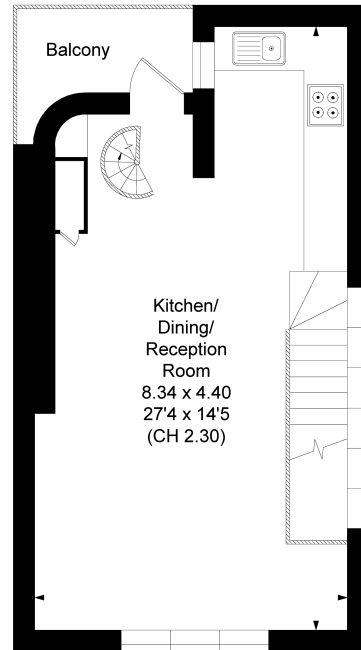


Bulls Gardens Chelsea, SW3

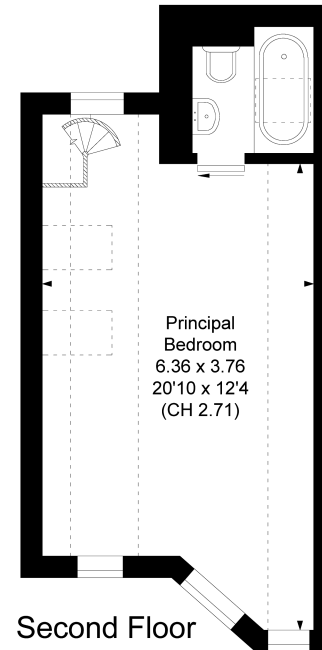
Approximate Floor Area = 94.28sq m / 1015 sq ft



Ground Floor



First Floor



Second Floor

Not to scale, for guidance only and must not be relied upon as a statement of fact.
All measurements and areas are approximate only

TERMS

Asking Price £1,500,000

Tenure Freehold

EPC D

Council Tax Band G

Local Authority The Royal Borough of Kensington and Chelsea

Let's talk Mortgages

Maskells has partnered with CBM Financial, an independent mortgage broker, directly authorised with specialist knowledge and whole of market access.

CLICK HERE

mortgages@maskells.com

Your home may be repossessed if you do not keep up repayments on your mortgage



@maskellsea

Maskells

71 Walton Street, London SW3 2HT

Tel: 0207 581 2216

sales@maskells.com

lettings@maskells.com

[maskells.com](https://www.maskells.com)