



Redburn Street  
Chelsea, SW3

**M**askells







A beautifully presented garden flat on a prime Chelsea address just South of the King's Road.



### Accommodation and Amenities

- IMMACULATLY PRESENTED
- SHARE OF FREEHOLD
- PRIVATE GARDEN
- EXCELLENT LOCATION



Accessed by its own front door, one enters a fantastic reception room with a bay window and a fireplace forming the focal points to the room. Adjacent is a fully fitted kitchen with an island unit and a breakfast bar. There are double doors leading out onto a charming patio garden which is the perfect place to dine Al-Fresco. Peacefully located towards the rear is a double bedroom with the addition of a conservatory dressing room, with bi-fold doors also leading out onto the garden. There is also a well-appointed bathroom which doubles as the guest cloakroom.

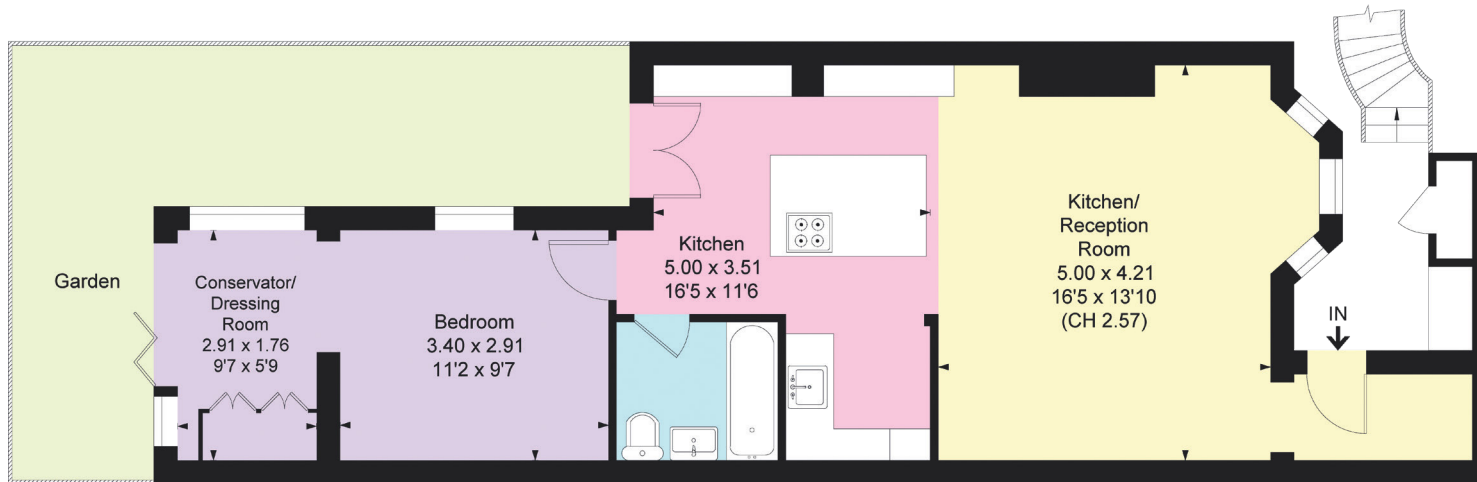
Redburn Street is a peaceful residential address in the heart of Chelsea. The King's Road, with its wide array of shops, bars and restaurants is 0.2 miles away. Sloane Square station is 0.8 miles away and the Chelsea Physic Garden is 0.2 miles away.





## APPROXIMATE FLOOR AREA

57.67 sq m / 621 sq ft



Lower Ground Floor

## TERMS

**Asking Price** £825,000

**Tenure** 999 years from 1st January 2004

**Service Charge** Approximately £400 per annum

**Ground Rent** Peppercorn

**EPC** C

**Council Tax** Band F

**Local Authority** The Royal Borough of Kensington and Chelsea

*Let's talk Mortgages* Maskells has partnered with CBM Financial, an independent mortgage broker, directly authorised with specialist knowledge and whole of market access. **CLICK HERE**  
[mortgages@maskells.com](mailto:mortgages@maskells.com)

Your home may be repossessed if you do not keep up repayments on your mortgage



@maskellsea

# Maskells

71 Walton Street, London SW3 2HT

Tel: 0207 581 2216

[sales@maskells.com](mailto:sales@maskells.com)

[lettings@maskells.com](mailto:lettings@maskells.com)

[maskells.com](https://www.maskells.com)

