



Cranmer Court
Chelsea, SW3



Positioned on the 7th floor (with lift) in this landmark portered block, this is a superb triple aspect lateral apartment offering far-reaching views of the London skyline.

Some images include CGI furnishings for illustrative purposes only.



Accommodation and Amenities

- Seventh-floor apartment with lift
- Superb triple-aspect layout
- Far-reaching London skyline views
- Three bedrooms, two bathrooms
- Portered Chelsea mansion block
- Two storage units



The flat is entered into a hallway with excellent storage, leading to the principal rooms. There is a very good, fully fitted kitchen with good storage and fitted appliances. Opposite is a wonderful reception room with 3 windows offering stunning views over London and ample space to relax or entertain. There is a dual aspect principal bedroom with an en-suite shower room and built-in storage. There is another double bedroom also with built-in storage and a bathroom adjacent which is shared with a smaller 3rd bedroom. The flat is very well presented and can be moved into without further expense. The flat comes with two storage units and more can be purchased through separate negotiation.

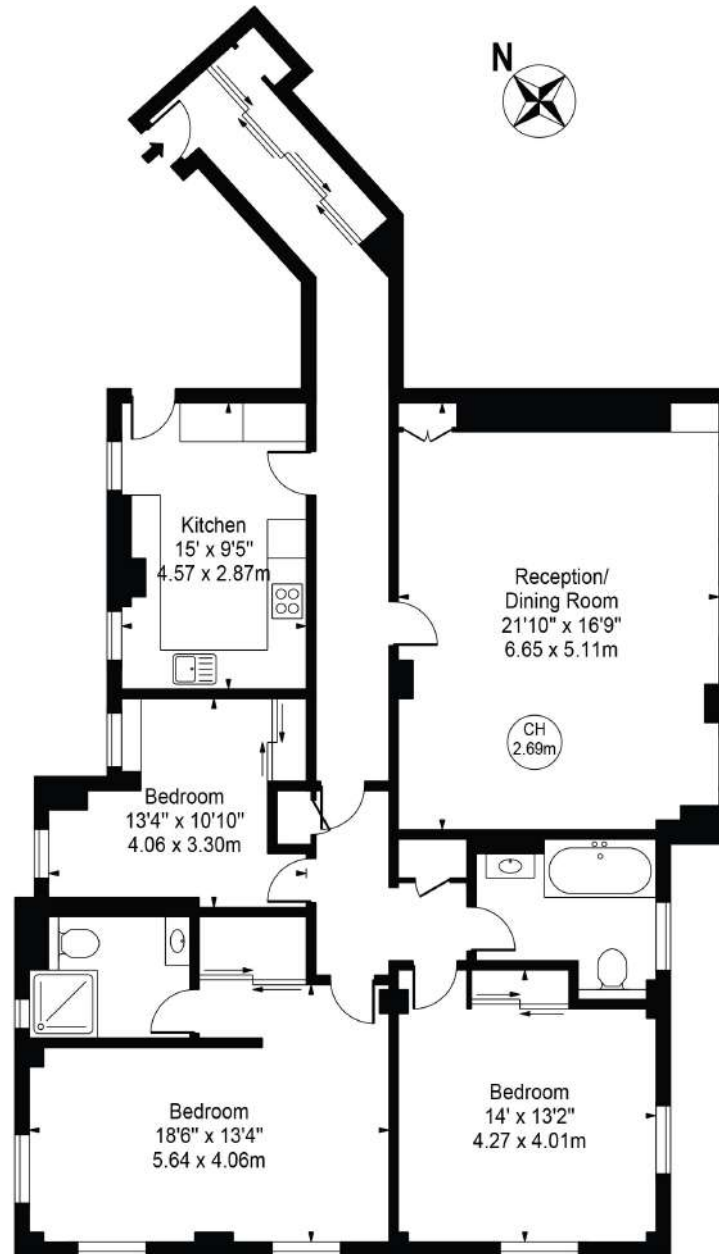
Cranmer Court is a highly regarded purpose-built block of flats in the heart of Chelsea. The building is portered and within immediate reach of the Kings Road, Fulham Road and the world – class amenities in the area as well as transport links with the underground at Sloane Square and South Kensington.





APPROXIMATE GROSS INTERNAL AREA

1,446 Sq Ft / 134.34 Sq M



Seventh Floor

ASKING PRICE

£2,350,000

TENURE

Leasehold - 150 years from 1st April 1991

SERVICE CHARGE

£4,675.11 for the 6 months to 30th September 2026 with an additional £2,882.37 for the same period contributed to the reserve fund

GROUND RENT

Peppercorn

LOCAL AUTHORITY

The Royal Borough of Kensington and Chelsea

COUNCIL TAX BAND

G

EPC RATING

C



71 Walton Street, London, SW3 2HT

Tel: 020 7581 2216

sales@maskells.com

lettings@maskells.com

maskells.com

We wish to advise prospective purchasers that we have prepared these sales particulars as a rough guide. We have not carried out a detailed survey or tested the services, appliances or specific fittings. Measurements are approximate.