



# HEREFORD ROAD, LONDON, W2

£575,000

## FEATURES

- High Ceilings
- New Shaker Style Kitchen
- In the Heart of Westbourne Grove
- Open Plan Living Space
- Elegant White Stucco Building
- 0.5 Miles From Notting Hill Gate Station



**Maskells**

A perfectly proportioned one bedroom apartment, with high ceilings and good entertaining space, set on the second floor of this handsome white stucco house.

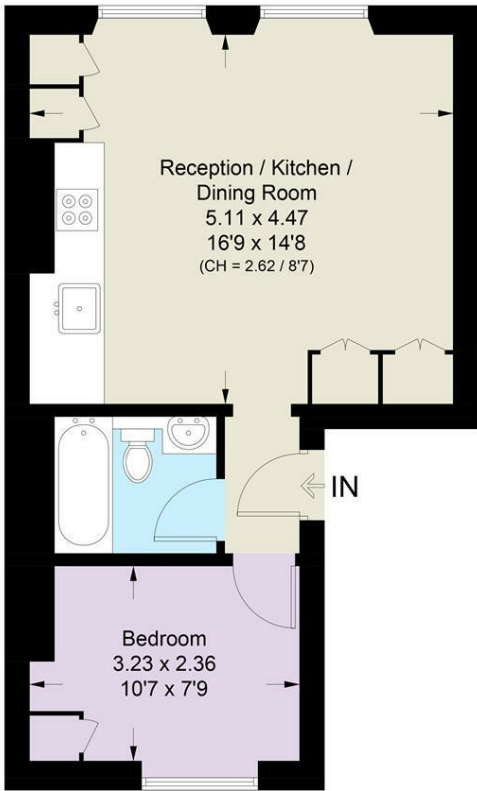
Call us on  
**0207 581 2216**

[sales@maskells.com](mailto:sales@maskells.com)  
[www.maskells.com](http://www.maskells.com)

Council Tax Band

**Hereford Road, W2**

Approximate Area = 404 sq ft / 37.5 sq m



**Second Floor**

This plan is for layout guidance only. Not drawn to scale unless stated. Windows and door openings are approximate. Whilst every care is taken in the preparation of this plan, please check all dimensions, shapes and compass bearings before making any decisions reliant upon them. (ID896761)

Energy Efficiency Rating		
	Current	Potential
Very energy efficient - lower running costs		
(92 plus) <b>A</b>		
(81-91) <b>B</b>		
(69-80) <b>C</b>		
(55-68) <b>D</b>		
(39-54) <b>E</b>		
(21-38) <b>F</b>		
(1-20) <b>G</b>		
Not energy efficient - higher running costs		
England & Wales		EU Directive 2002/91/EC

Agents Note: Whilst every care has been taken to prepare these particulars, they are for guidance purposes only. All measurements are approximate and are for general guidance purposes only and whilst every care has been taken to ensure their accuracy, they should not be relied upon and potential buyers are advised to recheck the measurements.

