



# Rosemoor Street

CHELSEA, SW3



Two flats have been combined to create this unusually large 2 bedroom flat (822 sq ft) on the ground floor of this sought after building with access to a good sized private south facing patio garden (not demised).

Presented in excellent condition this flat offers bright, spacious accommodation consisting of 2 double bedrooms, large open plan reception room/kitchen, study area, en-suite bathroom and shower room.

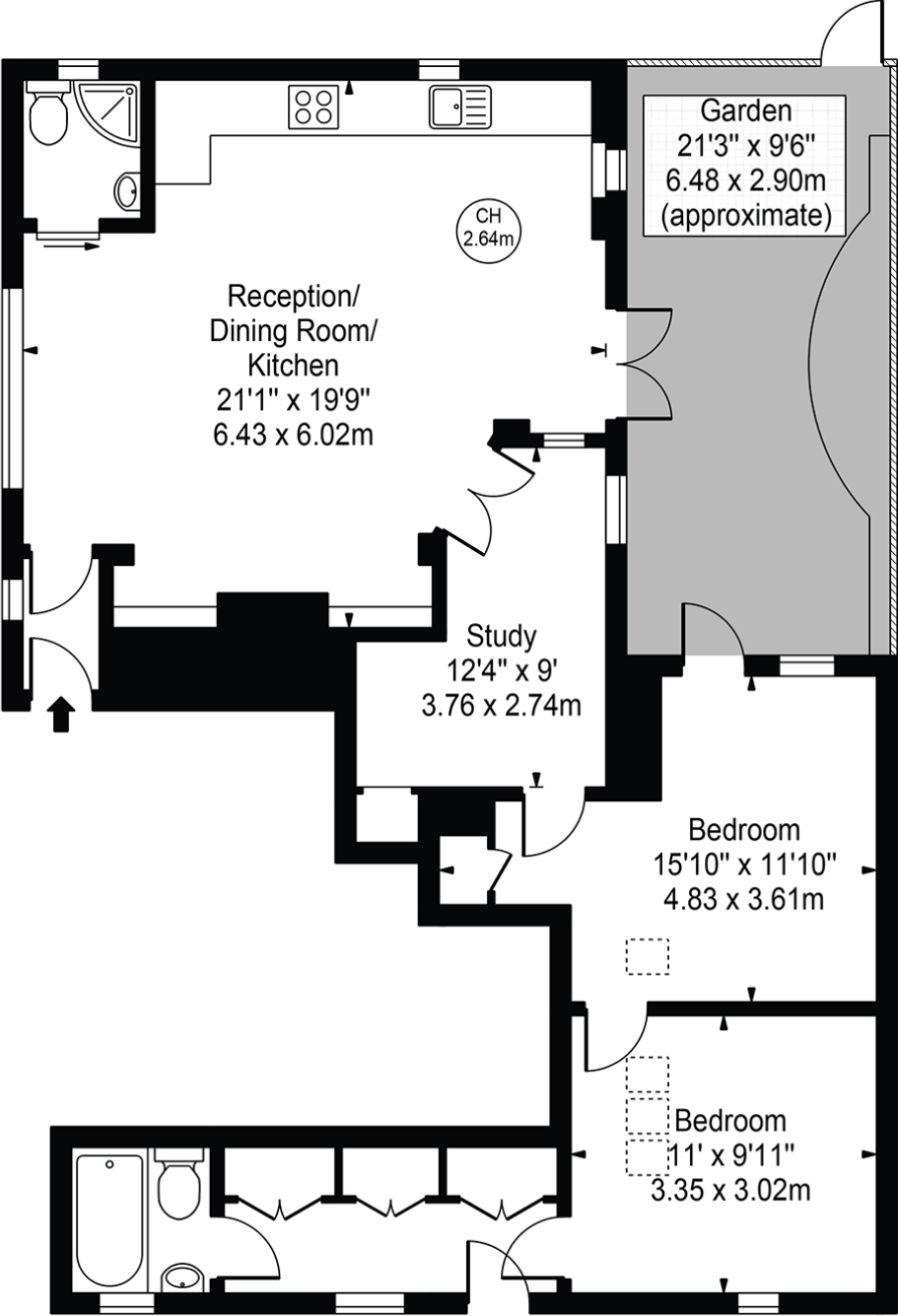
Rosemoor Street is a quiet street, perfectly located in the heart of Chelsea, moments from the excellent amenities of both the King's Road and Sloane Street. Sloane Square and South Kensington underground stations are both within easy reach.







Approx. Gross Internal Area: 822 Sq Ft / 76.37 Sq M



GROUND FLOOR

We wish to advise prospective purchasers that we have prepared these sales particulars as a rough guide. We have not carried out a detailed survey or tested the services, appliances or specific fittings. Measurements are approximate.

Asking Price: £995,000

Leasehold: approx. 980 years  
remaining, with a Share of Freehold

Service Charge: £2,800 Per Annum

Ground Rent: Peppercorn

Local Authority: The Royal Borough of  
Kensington and Chelsea

Council Tax Band: G

EPC: E



71 Walton Street

London

SW3 2HT

0207 887 2532

[sales@maskells.com](mailto:sales@maskells.com)