



Chelsea Towers Chelsea Manor
Gardens, SW3

A light and airy 2nd floor apartment (with lift) perfectly located in the heart of Chelsea, just off the Kings Road.

Accommodation and Amenities

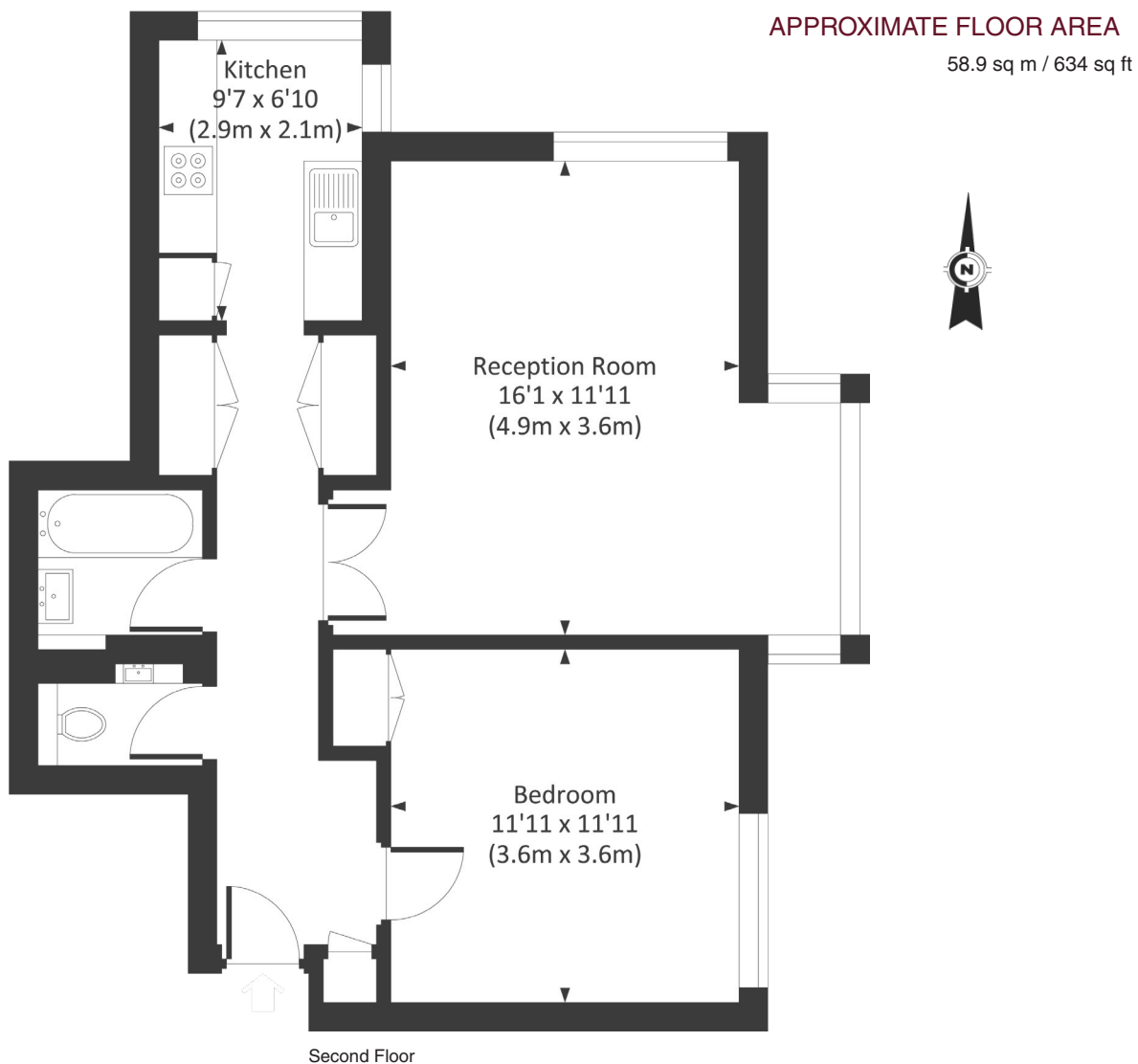
- LARGE ONE BEDROOM APARTMENT (634 SQ FT)
- SECURE PORTERED BUILDING SET JUST OFF KING'S ROAD
- COMMUNAL ROOF TERRACE
- FLOODED WITH NATURAL LIGHT, AND PROVIDING LOVELY VIEWS
- 0.6 MILES TO SOUTH KENSINGTON TUBE
- 0.6 MILES TO SLOANE SQUARE
- 0.5 MILES TO BATTERSEA PARK



Chelsea Manor Gardens is located just south of the Chelsea Town Hall. Chelsea Towers also offers wonderful communal roof terraces which are accessed across the hall from the apartment. No 34 is in the West block of Chelsea Towers. It has almost direct access to two communal roof terraces. The well laid out apartment extends to 634 sq ft and offers a good double bedroom, bathroom and separate w.c. It has a generous double aspect reception room and separate kitchen. The flat has good storage and benefits from an extended lease.

The property is located 0.6 miles from South Kensington underground station (District, Circle and Piccadilly lines) and 0.8 miles from Sloane Square underground station (District and Circle lines). There are also excellent bus links on the Kings Road.





TERMS

Asking Price £695,000

Tenure Leasehold, From 1 March 2016 to and including 21 December 2132 therefore approximately 107 years remaining.

Service Charge £5204.52

Ground Rent TBC

EPC TBC

Council Tax Band F

Local Authority The Royal Borough of Kensington and Chelsea

NB: Photos as previously dressed

Let's talk Mortgages Maskells
has partnered with CBM Financial, an independent mortgage broker, directly authorised with specialist knowledge and whole of market access. [CLICK HERE](#)
mortgages@maskells.com

Your home may be repossessed if you do not keep up repayments on your mortgage



@maskellsea

Maskells

71 Walton Street, London SW3 2HT

Tel: 0207 581 2216

sales@maskells.com

lettings@maskells.com

[maskells.com](https://www.maskells.com)

