



Buckingham Gate,
Westminster, SW1E



A fantastic 2 bedroom, 2 bathroom flat, presented in immaculate condition forming part of a sought-after modern development with a 24/7 concierge.



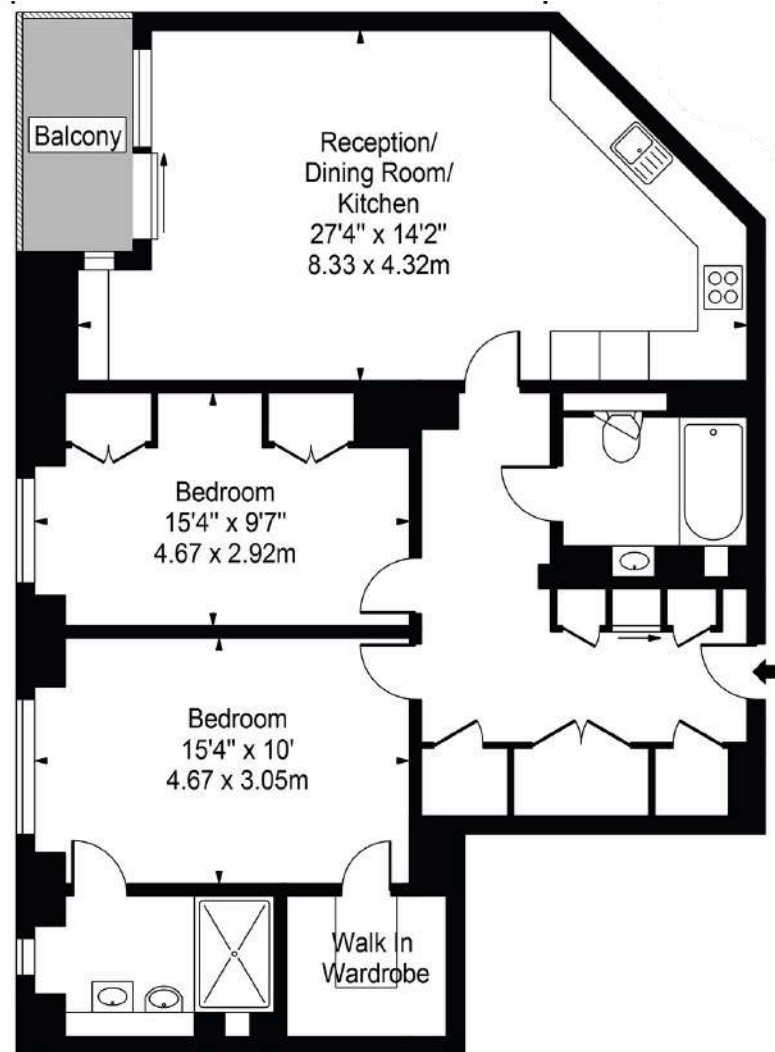
Accommodation and Amenities

- Lateral Layout
- Long Lease
- Concierge
- Excellent Condition

The flat is situated on the 5th floor and is entered into a generous hallway where there is excellent storage. There is a super open plan kitchen / reception room with modern fitted appliances and space for seating as well as a dining table. Sliding glass doors lead out onto a useful balcony. There are two double bedrooms – one larger with an en-suite shower room and an excellent dressing room. The 2nd bedroom is also a double and is supported by a guest bathroom.

Wellington House benefits from a 24 hour concierge and is very well located for the wide array of amenities on offer in the immediate area which has seen significant investment over recent years. St James's Park underground station is 0.1 miles away and Victoria Station is 0.8 miles away.





APPROXIMATE FLOOR AREA

91.42 sq m / 984 sq ft



TERMS

Asking Price £1,200,000

Tenure Leasehold, 999 years from and including 1 January 2012

Service Charge £11,200 Includes contribution to the reserve fund

Ground Rent £750

EPC : C

Council Tax Band G

Local Authority City of Westminster

Let's talk Mortgages

Maskells has partnered with CBM Financial, an independent mortgage broker, directly authorised with specialist knowledge and whole of market access.

CLICK HERE

mortgages@maskells.com

Your home may be repossessed if you do not keep up repayments on your mortgage



@maskellsea

Maskells

71 Walton Street, London SW3 2HT

Tel: 0207 581 2216

sales@maskells.com

lettings@maskells.com

maskells.com

Fifth Floor



We wish to advise prospective purchasers that we have prepared these sales particulars as a rough guide. We have not carried out a detailed survey or tested the services, appliances or specific fittings. Measurements are approximate.