



# NORTH END ROAD, LONDON, SW6

## £595,000

### FEATURES

- Two-bedroom apartment
- Arranged over ground and first floors
- Modern fitted kitchen
- Wood flooring and neutral décor
- Approx. 712 sq ft / 66.15 sq m
- Open-plan reception / dining / kitchen
- Bathroom plus separate shower room
- Convenient Fulham location



# Maskells

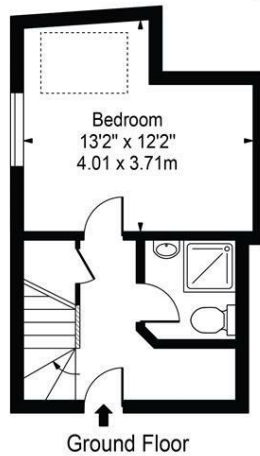
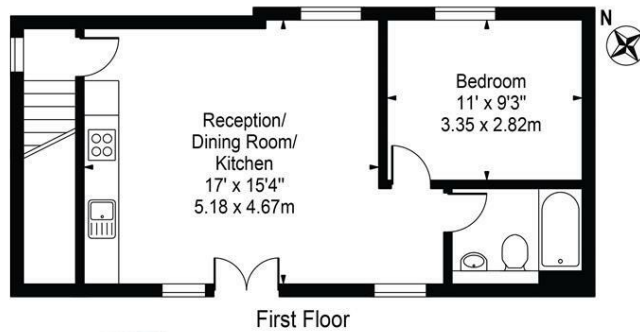
A bright and well-presented two-bedroom apartment arranged over the ground and first floors, offering approximately 712 sq ft / 66.15 sq m of stylish and practical accommodation. With its own private entrance from the street and split-level layout, the property has the feel of a small house rather than a conventional flat.

Call us on  
**0207 887 2532**

[saleskcs@maskells.com](mailto:saleskcs@maskells.com)  
[www.maskells.com](http://www.maskells.com)

Council Tax Band  
**B**

North End Road  
Approx. Gross Internal Area 712 Sq Ft - 66.15 Sq M



For Illustration Purposes Only - Not To Scale

This floor plan should be used as a general outline for guidance only and does not constitute in whole or in part an offer or contract. Any intending purchaser or lessee should satisfy themselves by inspection, searches, enquiries and full survey as to the correctness of each statement. Any areas, measurements or distances quoted are approximate and should not be used to value a property or be the basis of any sale or let.

Energy Efficiency Rating		Current	Potential
<i>Very energy efficient - lower running costs</i>			
(92 plus) A			
(81-91) B			
(69-80) C			
(55-68) D		61	62
(39-54) E			
(21-38) F			
(1-20) G			
<i>Not energy efficient - higher running costs</i>			
<b>England &amp; Wales</b>		EU Directive 2002/91/EC	

Agents Note: Whilst every care has been taken to prepare these particulars, they are for guidance purposes only. All measurements are approximate and are for general guidance purposes only and whilst every care has been taken to ensure their accuracy, they should not be relied upon and potential buyers are advised to recheck the measurements.

**Maskells**