



Moorhouse Road
Notting Hill W2

Located in the ever desirable 'Artesian Village' this charming two-bedroom garden flat with has a wonderful west-facing garden and is ready for the new owner to put their own stamp on it.



Accommodation and Amenities

- TWO DOUBLE BEDROOMS
- ENVIABLE LOCATION IN THE ARTESIAN VILLAGE
- PRIVATE WEST-FACING GARDEN
- QUIET LOCATION

With two double bedrooms, a large living space, and separate dining area in the conservatory which leads out into the private garden.

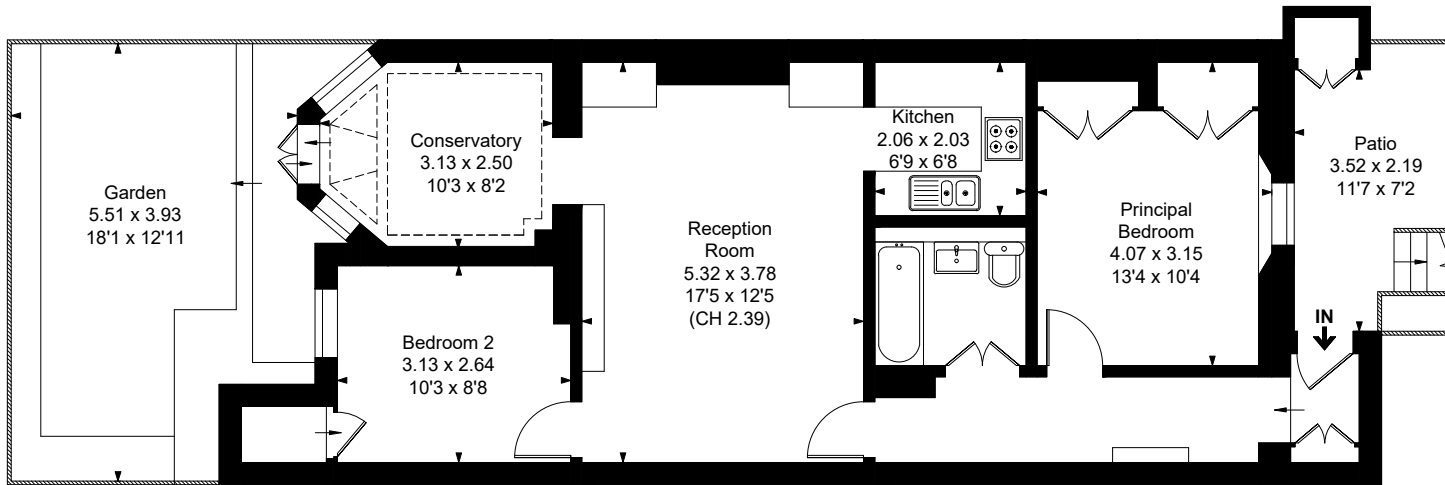
There is a large double bedroom at the front of the building with a bathroom with bath and overhead shower located off the hallway. A second double bedroom at the rear of the flat completes the accommodation.

Moorhouse Road is a quiet, sought after address in the ever popular 'Artesian Village'. The restaurants, shopping and transport amenities of the local area and the green spaces of Kensington Gardens are situated very close by.



APPROXIMATE FLOOR AREA

69.27 sq m / 745 sq ft



Lower Ground Floor

TERMS

Asking Price £795,000

Tenure Leasehold 96 years remaining

Service Charge Approx £3,060 Per Annum

Ground Rent £200 Per Annum

EPC C

Council Tax Band D

Local Authority City of Westminster

Let's talk Mortgages

Maskells has partnered with CBM Financial, an independent mortgage broker, directly authorised with specialist knowledge and whole of market access.

CLICK HERE
mortgages@maskells.com

Your home may be repossessed if you do not keep up repayments on your mortgage



@maskellsea

Maskells

105 Kensington Church Street,
London W8 7LN
Tel: 0207 887 2532
sales@maskells.com
lettings@maskells.com

[maskells.com](https://www.maskells.com)



We wish to advise prospective purchasers that we have prepared these sales particulars as a rough guide. We have not carried out a detailed survey or tested the services, appliances or specific fittings. Measurements are approximate.