



**NORTH POLE ROAD,  
LONDON, W10**

**£600 Per Week**

#### FEATURES

- Lateral one or two bedroom apartment
- Recently renovated
- Conran lighting
- Beautiful original features
- 0.6 miles from White City tube



**Maskells**

A recently refurbished one/two bedroom apartment located in this quiet corner of North Kensington. The property has been sympathetically designed with added touches such as beautiful intricate cornicing and designer lighting by Conran. Just a short distance to the hustle and bustle of Notting Hill, the location is ideal and easy access to the green space of Wormwood Scrubs. The property has been meticulously thought through and allows the option of using the property as a very large one bed with three reception areas or a two bedroom with two reception areas.

The property has a spacious semi open plan kitchen/reception room with in built storage and a designated dining area with striking wall paper, a further reception room for casual seating and a formal reception to the front of the property which could be used as a large second bedroom, which has ample storage. There is a good size double bedroom with fantastic in built wardrobes running along the width of the room and a good size shower room with rainforest shower and a storage mirror. There is also a further bathroom and storage cupboard. EPC rating D.

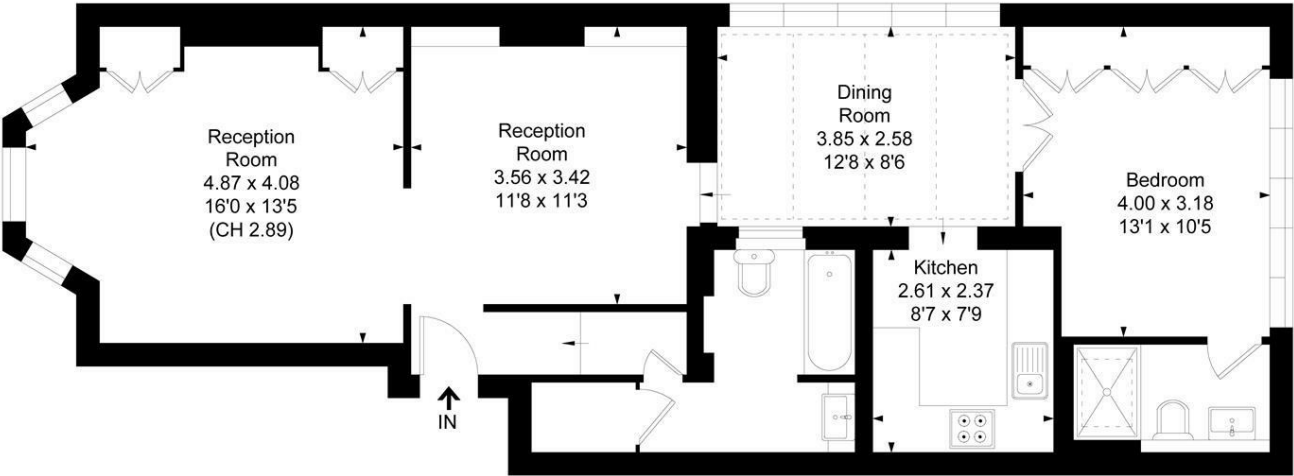
All potential tenants should be advised that administration fees may be applicable when renting a property. Please contact us for more details of these charges. Maskells are members of

Call us on  
**0207 887 2532**  
**lettingskcs@maskells.com**  
**www.maskells.com**

Council Tax Band  
**D**

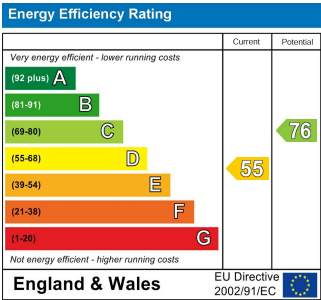
# North Pole Road, W10

Approximate Floor Area = 77.51sq m / 834 sq ft



Ground Floor

Not to scale, for guidance only and must not be relied upon as a statement of fact.  
All measurements and areas are approximate only



Agents Note: Whilst every care has been taken to prepare these particulars, they are for guidance purposes only. All measurements are approximate and are for general guidance purposes only and whilst every care has been taken to ensure their accuracy, they should not be relied upon and potential buyers are advised to recheck the measurements

