



Barness Court,
Bayswater, W2

Maskells

A large two-bedroom apartment set in an impressive white stucco building in Bayswater.



Accommodation and Amenities

- TWO BEDROOM LATERAL APARTMENT
- LARGE SPACIOUS RECEPTION ROOM
- MODERN FIXTURES AND FITTINGS
- 0.2 MILES TO PADDINGTON
- 0.2 MILES TO LANCASTER GATE

This fantastic flat has a wonderfully large reception room with a double aspect. The room is large enough to allow a tenant to designate areas for both living and dining. There is a separate contemporary kitchen with a full height fridge freezer and easy access to the washing machine.

The lateral living means there is no wasted space and the property offers a good-sized master bedroom suite with ample storage. There is a second double bedroom and both these bedrooms have access to the bathroom which offers a shower over the bath.

All potential tenants should be advised that administration fees may be applicable when renting a property. Please contact us for more details of these charges. Maskells are members of Propertymark the leading membership body for property agents. We are part of the Propertymark Client Money Protection scheme and a member of The Property Ombudsman Scheme (approved by the Office of Fair Trading) and subscribe to its Codes of Practice for Letting Agents.



APPROXIMATE FLOOR AREA

88.6 sq m / 954 sq ft

TERMS

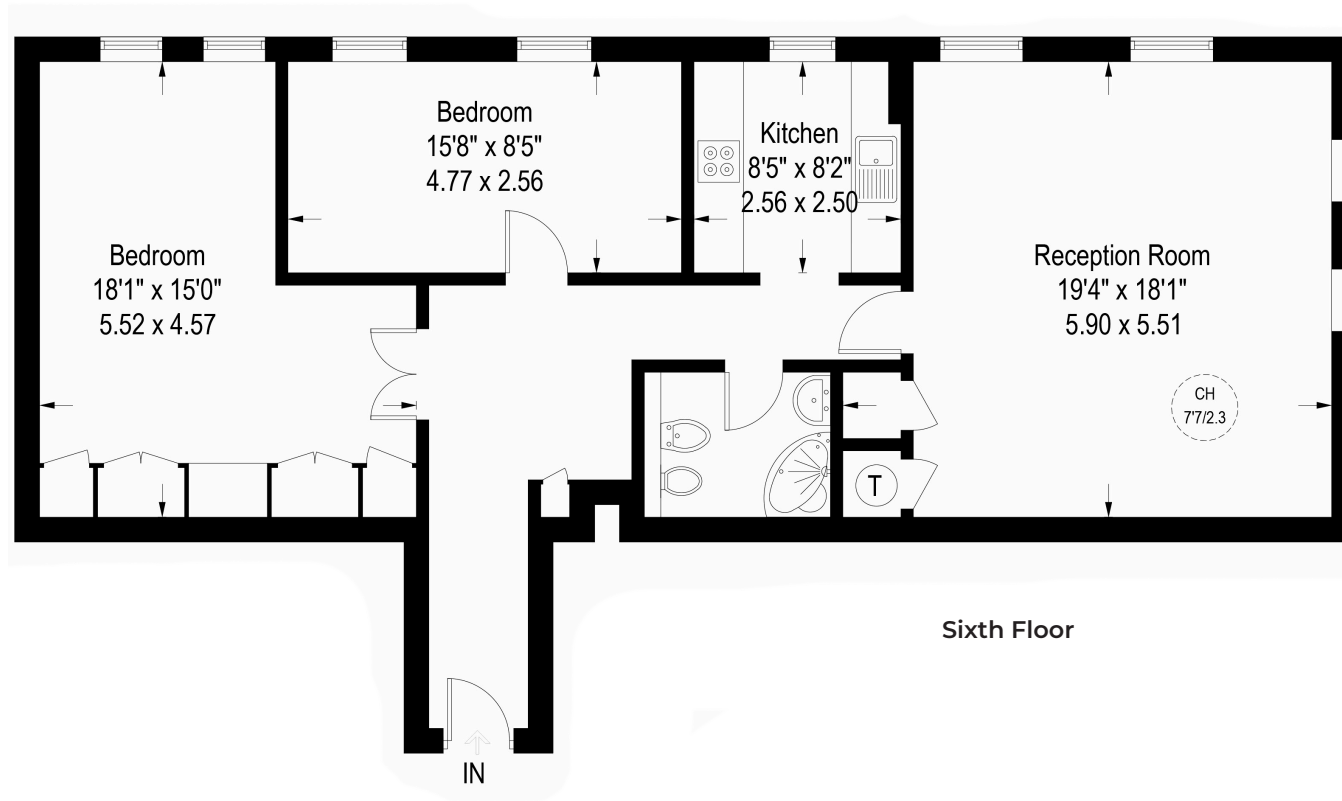
Asking Price £675 Per Week (£2,925 PCM)

FURNISHED

EPC C

Council Tax Band G

Local Authority Westminster



@maskellsea

Maskells

105 Kensington Church Street,
London W8 7LN
Tel: 0207 581 2216
sales@maskells.com
lettings@maskells.com

[maskells.com](https://www.maskells.com)



We wish to advise prospective purchasers that we have prepared these sales particulars as a rough guide. We have not carried out a detailed survey or tested the services, appliances or specific fittings. Measurements are approximate.