



# Kensington Court

KENSINGTON, W8



A fantastic lateral 3 bedroom apartment positioned over the second floor of this handsome red brick building with south facing views over Kensington Court. Featuring stunning parquet flooring and a wealth of natural light, this apartment comprises of a stylish open plan kitchen fitted with Miele appliances and a glorious reception featuring views of the surrounding area. In addition is a spacious master bedroom with plenty of storage, an opulent en-suite bathroom with separate bath and shower and his and hers sinks. There are two further double bedroom suites and a large storage cupboard. Energy Rating B.

The property boasts extensive storage throughout and there is use of a well maintained communal garden for residents of the building. The property also benefits from a day concierge within the building. Situated on this beautiful square in a prime Kensington location adjacent to Kensington Palace and High Street Kensington. The property can be furnished by separate negotiation.

Material Information Parts B&C guidance as follows: Gas - Mains gas central heating. Water and Sewerage - mains water and sewerage. Internet-according to Ofcom, broadband services are available, including fibre. Mobile coverage - according to FTTP Pro, there is 3/4/5G mobile coverage at this address. Parking- enquire with local council Kensington and Chelsea, additional costs may be applicable.

Fees may be applicable to potential tenants, please ask us for more details.



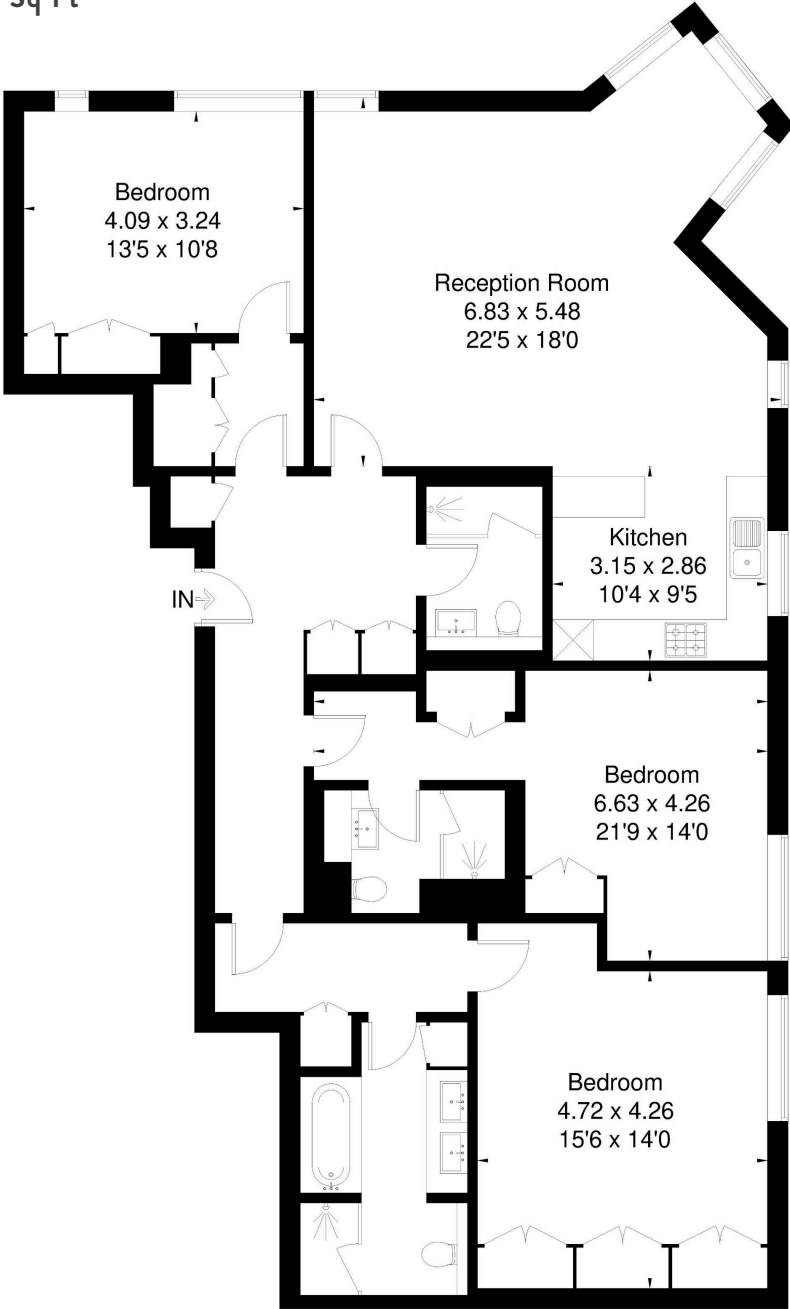




- First floor lateral 3 bedroom bedroom apartment
- Recently renovated
- Concierge
- Communal garden
- Close to Kensington Park Gardens



Approx. Gross Internal Area: 148.5 Sq M / 1,598 Sq Ft



SECOND FLOOR

We wish to advise prospective purchasers that we have prepared these sales particulars as a rough guide. We have not carried out a detailed survey or tested the services, appliances or specific fittings. Measurements are approximate.

Asking Price: £2,950 Per Week (£12,784 PCM)

UNFURNISHED

EPC: B

LOCAL AUTHORITY: Royal Borough of Kensington and Chelsea

COUNCIL TAX BAND: H

Maskells

105 Kensington Church Street

London

W8 7LN

0207 887 2532

[lettings@maskells.com](mailto:lettings@maskells.com)