

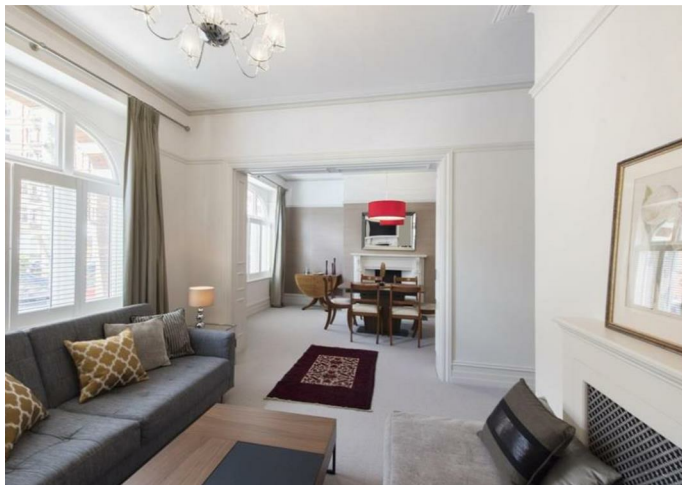


IVERNA COURT, LONDON, W8

£1,038 Per Week Per Week
(£4,498 PCM)

FEATURES

- Two bedroom, two bathroom lateral apartment
- Concierge
- Lateral living
- Furnished
- 300 yards to High Street Kensington



Maskells

An elegant two-bedroom apartment set in one of the most desirable mansion blocks in Kensington. This fantastic flat has a wonderful double reception room with designated areas for both living and dining. From the reception room there are two large windows with views over the communal garden square. There is a separate contemporary kitchen with in built appliances and the original fireplace for decorative purposes.

The lateral living means there is no wasted space and the property offers a good-sized master bedroom suite with ample storage and a large bathroom. There is a second double bedroom with

IVERNA COURT, W8

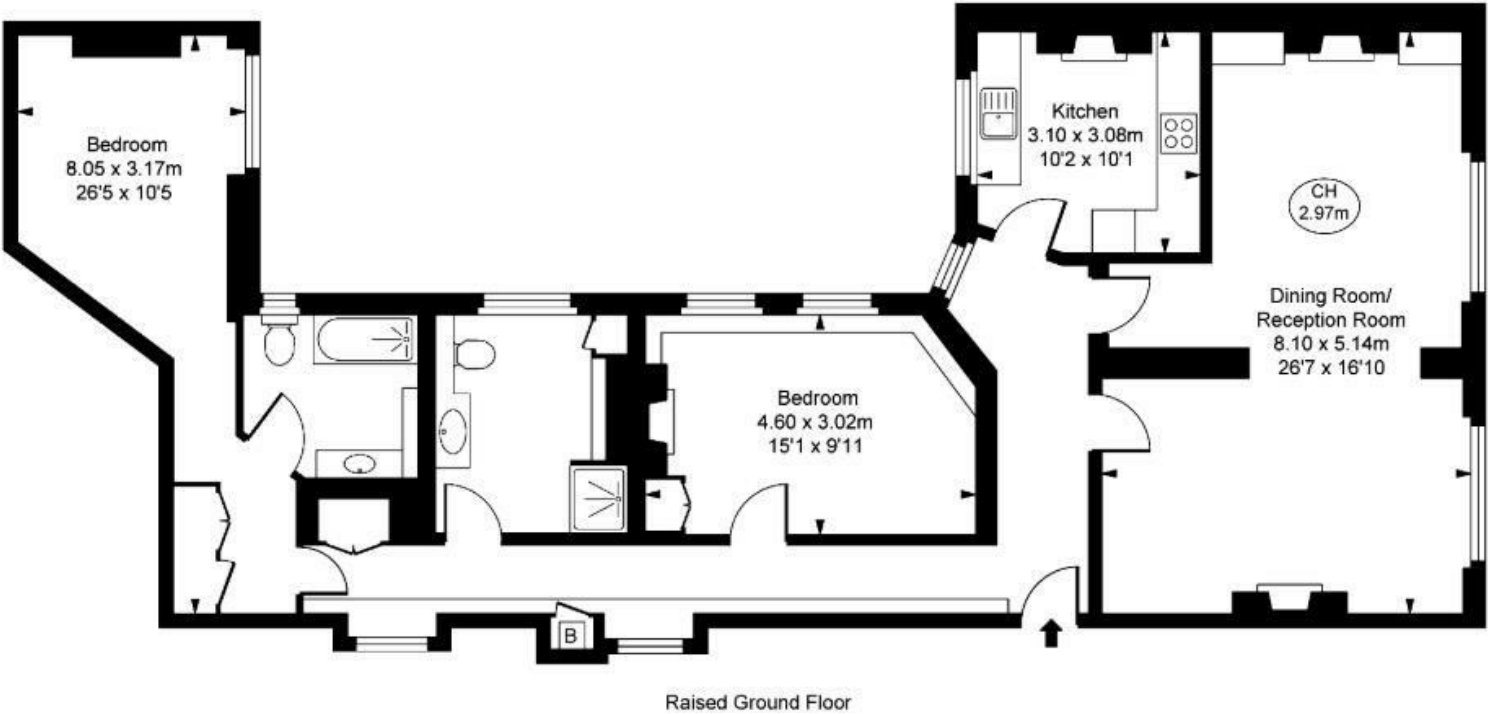
Gross internal area 1,233 sq ft (144.58 sq m)

CH = Ceiling Heights

For identification purposes only.

For illustrative purposes only - not to scale

The position and size of doors, windows, appliances and other features are approximate only.



Call us on

0207 887 2532

Lettings@maskells.com

www.maskells.com

Council Tax Band :

EPC :

H

Agents Note: Whilst every care has been taken to prepare these particulars, they are for guidance purposes only. All measurements are approximate and are for general guidance purposes only and whilst every care has been taken to ensure their accuracy, they should not be relied upon and potential buyers are advised to recheck the measurements

