



HEREFORD ROAD, NOTTING HILL W2

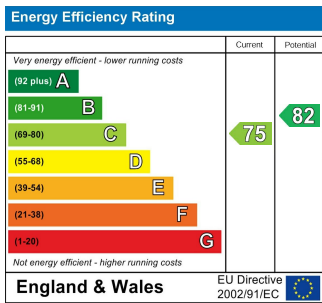
£895 Per Week (£3,878.33 PCM)

FEATURES

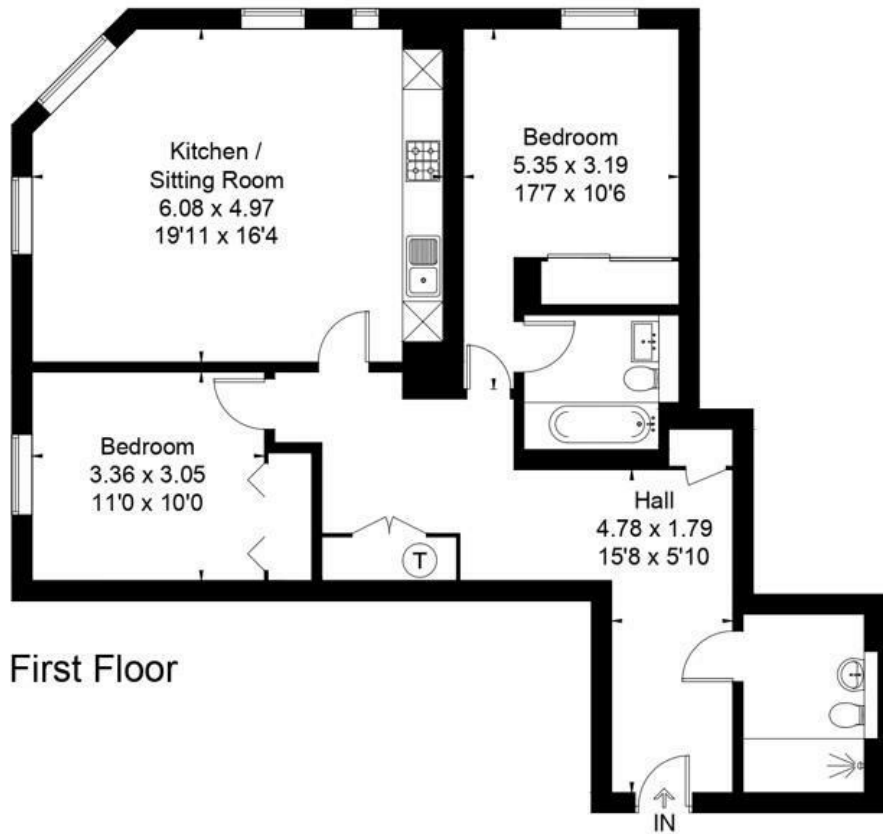
- Two Bedroom Lateral Apartment
- Fantastic Location
- Air-conditioning
- Lift
- Day Porter



Maskells



OPAL APARTMENTS, 43 HEREFORD ROAD
LONDON W2 5AH
Approximate Floor Area = 91.7 sq m / 987 sq ft



First Floor



This floor plan has been drawn in accordance with RICS Property Measurement 2nd edition. All measurements, including the floor area, are approximate and for illustrative purposes only @djd.london 62858

Agents Note: Whilst every care has been taken to prepare these particulars, they are for guidance purposes only. All measurements are approximate and are for general guidance purposes only and whilst every care has been taken to ensure their accuracy, they should not be relied upon and potential buyers are advised to recheck the measurements.

Call us on
0207 887 2532

lettingskcs@maskells.com
www.maskells.com

Council Tax Band: G

A fantastic two double bedroom lateral apartment located in the heart of Notting Hill. The property comprises an open plan kitchen/reception room, master bedroom with en-suite bathroom, second double bedroom and a family bathroom. Further benefits include wooden floors throughout, air conditioning, lift access and day porter for the building. EPC Rating C.

Located within this prestigious area of Notting Hill, the property benefits from excellent transport links by either underground (District, Circle, Central and the Hammersmith and City lines) or by bus to the West End, the City and Canary Wharf. It is also within close proximity to Hyde Park, Kensington Gardens, Holland Park, Kensington High Street and the Westfield shopping centre. EPC Rating C.

Material Information Parts B&C guidance as follows: Gas - Mains gas central heating. Water and Sewerage - mains water and sewerage. Internet- according to Ofcom, broadband services are available, including fibre. Mobile coverage - according to FTTP Pro, there is 3/4/5G mobile coverage at this address. Step free access. Parking- enquire with local council Westminster, additional costs may be applicable.

Fees may be applicable to potential tenants, please ask us for more details.

Maskells