



**GATEWAY CAPITAL  
PROPERTY**

LONDON'S PROPERTY MANAGEMENT SPECIALIST



**TO LET**

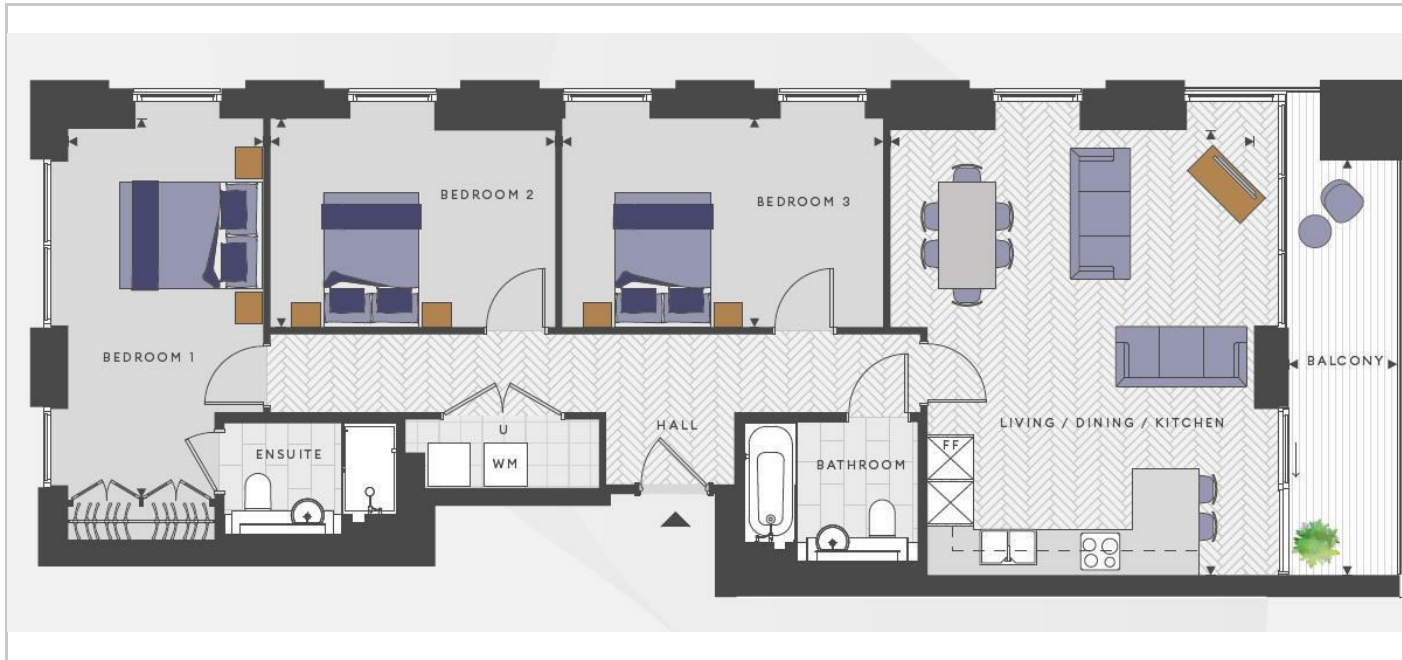


**£3,300 Per month**

- Brand-new 3 bedroom 2 bathroom flat
- Zone 3, 19 minutes to Central London
- 1.4 acres of podium gardens, a 1.5 acre public park and 175 metre oxbow lake
- Concierge and sociable residents' lounge
- Co-working area with meeting spaces and teleconferencing booths
- Contemporary gym and fitness studio & private screening room
- Easy access to the UK's top schools & universities

## THE PROPERTY

Located in West Hendon, nestled between Brent Cross and Wembley, with the stadium's iconic arch visible on the horizon, Silkstream is in a prime location for some of North London's best school districts, green spaces and shopping - particularly with one of the UK's largest shopping centres nearby. It's only 19 minutes away from King's Cross via Thameslink, meaning that the heart of London is right on your doorstep.



## SITUATION

## Directions