

6 Coachmans Yard | Glastonbury | BA6 9QG

LEASEHOLD

£169,950

PROPERTY SUMMARY



Located in the heart of Glastonbury is this well presented two bedroom second floor apartment. The property comprises an entrance hall, open plan lounge/kitchen/diner, two bedrooms and a bathroom. Externally the property benefits from an allocated off road parking space. An internal viewing is highly recommended.

Communal Entrance

Communal entrance door to front with secure telephone entry system. Stairs to the top floor and main entrance to the property.

Entrance Hall

Doors to open plan lounge/kitchen/diner. Doors leading to bedroom one, two and bathroom. Electric storage heater, Wall mounted electrical consumer unit. Double storage cupboard housing the hot water tank. Space and plumbing for a washing machine.

Open Plan Lounge/Kitchen/Diner

17'3 x 18'11 (5.26m x 5.77m)

This spacious room is briefly laid out as below.

Kitchen

Fitted with a range of wall, drawer and base unit with work surfaces over. Stainless steel sink with drainer and mixer tap over. Integrated four ring electric hob with cooker hood over. Integrated electric oven. Integrated fridge/freezer. Integrated slimline dishwasher. Breakfast bar.

Lounge/Diner

Wall mounted electric storage heater. Two double glazed windows to front.

Bedroom One

12'10 x 12'11 (3.91m x 3.94m)

Built in wardrobes. Wall mounted electric heater. Double glazed window to rear.



Second Floor Apartment

Open Plan Lounge//Kitchen/Diner

Two Bedrooms

Bathroom

Double Glazing

Electric Storage Heaters

Well Presented

Off Road Parking Space

Short Walk To The Town Centre



**INTERESTED IN THIS
PROPERTY**

Need to sell first?

Please call us on
01458 888 020

to arrange
A FREE

MARKET APPRAISAL

MORTGAGE ADVICE

Would you like to have advice
from a fully qualified Mortgage
Consultant with access to the
mortgage market?

**Tor Finance will assess your
needs and recommend the
most suitable mortgage
product available to you.**

**Please call us on
01458 888 020 ext 3
to arrange
A FREE INITIAL
CONSULTATION**

Your property may be repossessed if
you do not keep up repayments on
your mortgage



Bedroom Two

13'8 x 7'9 (4.17m x 2.36m)

Wall mounted electric heater. Double glazed window to rear.

Bathroom

Fitted with a white suite comprising low level WC, pedestal wash hand basin and panelled bath with mains connected shower over. Fully tiled walls. Heater towel rail. Wall mounted electric heater. Extractor fan.

Outside

The property benefits from an allocated parking space for one vehicle, located at the rear of the property.

Purchasers Note

979 years remaining on the lease.

£1,145.00 per annum for the Management Charge and
£150.00 per annum for Ground Rent.

Disclaimer

Important Notice: Tor Estates, its clients and any joint agents give notice that 1: They are not authorised to make or give any representations or warranties in relation to the property either here or elsewhere, either on their own behalf or on behalf of their client or otherwise. They assume no responsibility for any statement that may be made in these particulars. These particulars do not form part of any offer or contract and must not be relied upon as statements or representations of fact. 2: Any areas, measurements or distances are approximate. The text, photographs and plans are for guidance only and are not necessarily comprehensive. It should not be assumed that the property has all necessary planning, building regulation or other consents and Tor Estates have not tested any services, equipment or facilities. Purchasers must satisfy themselves by inspection or otherwise.



LETTINGS

Call us today for more information

- Vacant Management
- Tenant Find
- Full Management
- Refurbishment Management
- Block Management
- Commercial Lets

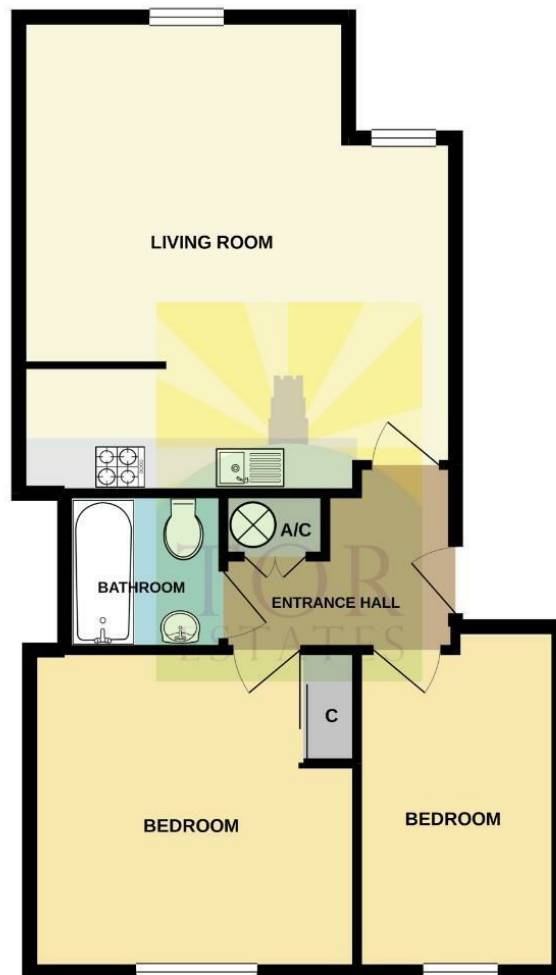
01458 888020

20 High Street
Glastonbury
BA6 9DU

73 High Street
Street
BA16 0EG

www.torestates.co.uk

info@torestates.co.uk
lettings@torestates.co.uk
mortgages@torestates.co.uk



Whilst every attempt has been made to ensure the accuracy of the floorplan contained here, measurements of doors, windows, rooms and any other items are approximate and no responsibility is taken for any error, omission or mis-statement. This plan is for illustrative purposes only and should be used as such by any prospective purchaser. The services, systems and appliances shown have not been tested and no guarantee as to their operability or efficiency can be given.
Made with Metropix ©2020

Energy Efficiency Rating		Current	Potential
Very energy efficient - lower running costs			
(92 plus) A			
(81-91) B			
(69-80) C		80	82
(55-68) D			
(39-54) E			
(21-38) F			
(1-20) G			
Not energy efficient - higher running costs			
England & Wales		EU Directive 2002/91/EC	



