



51C Highway Road  
, Thurmaston, LE4 8FR  
**£1,250 Per Month**





Set in a sought-after location, this very well presented three bedroom detached bungalow, modern throughout benefitting from a main bathroom and an en-suite.

The property comprises of, entrance hallway, a larger than average living room space, separate fitted kitchen, three bedrooms, one with an en-suite and a fully fitted three piece bathroom suite.

The front of the property is off road parking and a single garage space. At the rear of the property is an enclosed rear garden space.

- Available August 2025!
- Detached Bungalow
- Three Bedrooms
- En-Suite & Main Bathroom
- Convenient to Local Amenities
- Driveway Parking & Garage
- Gas Central Heating & UPVC Double Glazed
- Internet
- Council Tax Band D
- EPC Rating C



### Viewing Arrangements

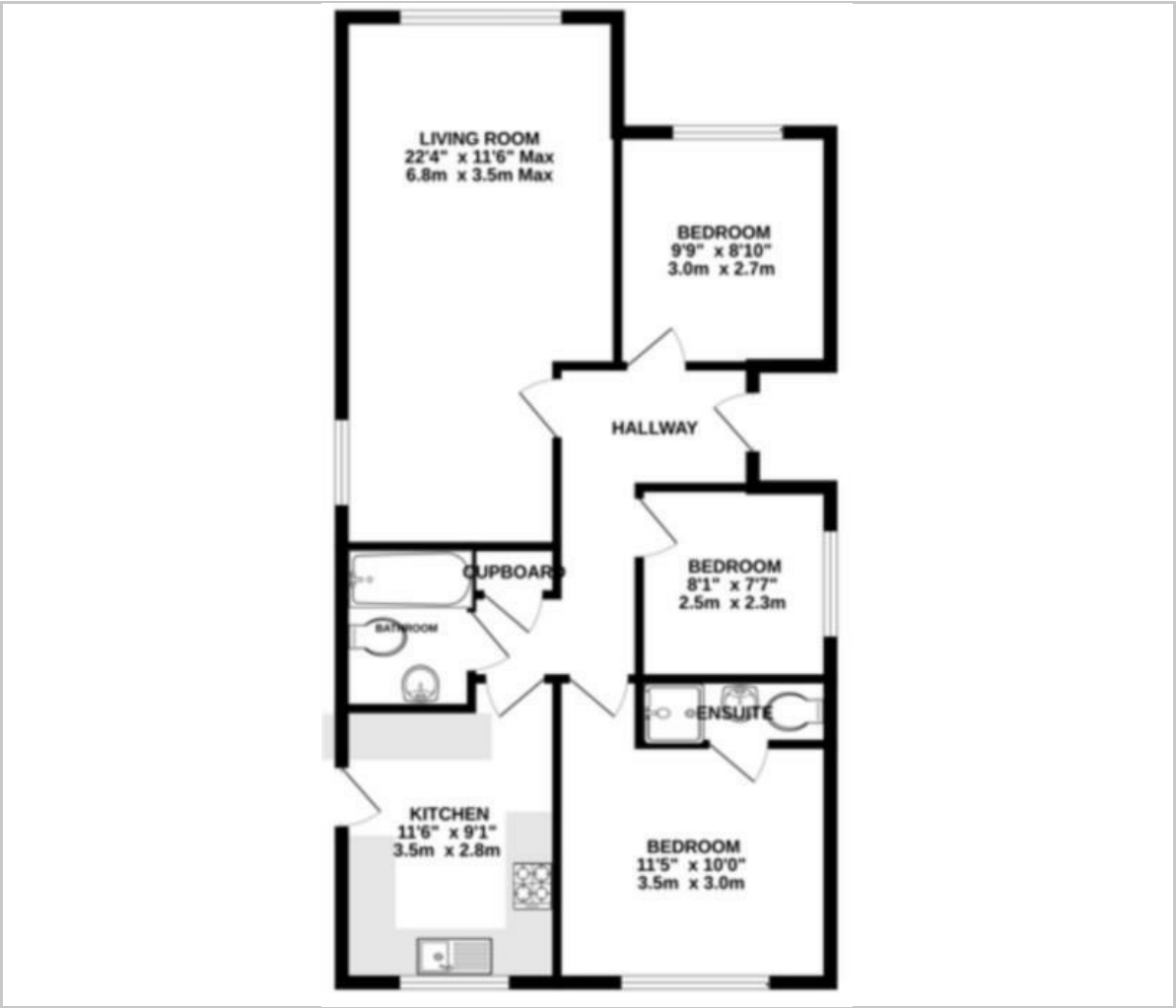
Please note, as part of the process and services to our landlord, all prospected tenants must view the property before submitting an application. For your application to be considered by the landlord, all adults must fill out one of our application forms following on from the viewing with one of our agents.

### Tenancy Information

- Price : £1250.00 PCM
- Holding Deposit: £288.00
- Deposit : £1442.00 (including the holding deposit)
- Length of tenancy : 12 Months
- Council tax band : D



Floor Plan



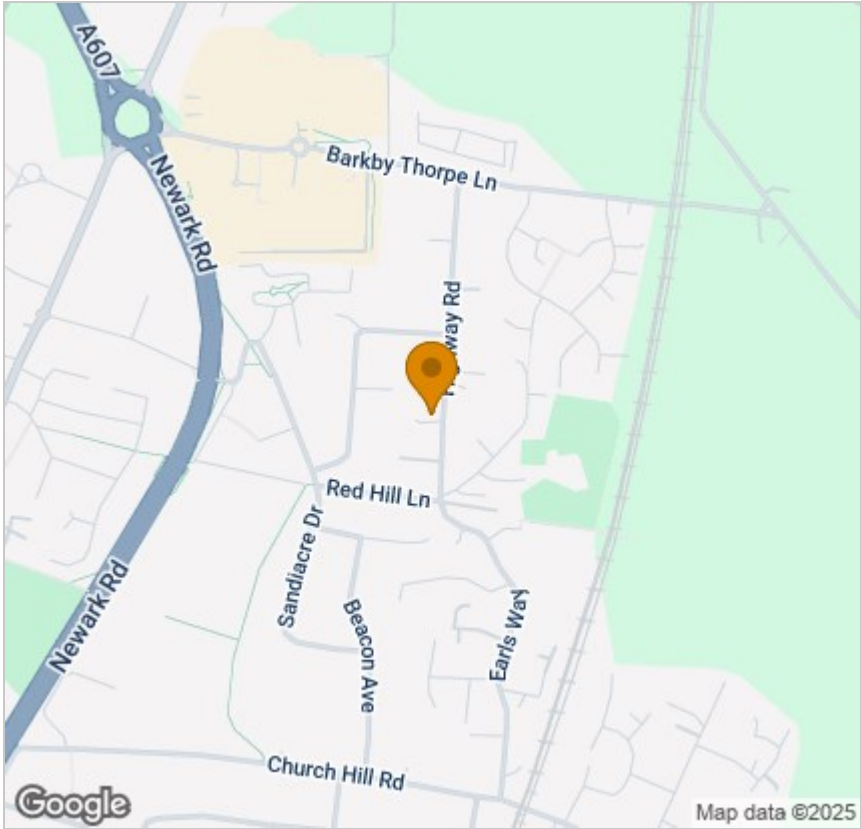
Viewing

Please contact our Wigston Lettings Office on 0116 2883872 if you wish to arrange a viewing appointment for this property or require further information.

These particulars, whilst believed to be accurate are set out as a general outline only for guidance and do not constitute any part of an offer or contract. Intending purchasers should not rely on them as statements of representation of fact, but must satisfy themselves by inspection or otherwise as to their accuracy. No person in this firms employment has the authority to make or give any representation or warranty in respect of the property.

67 67 Long Street, Wigston, Leicestershire, LE18 2AJ  
Tel: 0116 2883872 Email: [lettings@astonandco.co.uk](mailto:lettings@astonandco.co.uk)  
<https://astonandco.co.uk/>

Area Map



Energy Efficiency Graph

