



32 Kilby Road
, Fleckney, LE8 8BL
£200,000



No upward chain! This very well presented, recently refurbished, two double bedroom end terrace property is conveniently located within the ever popular South Leicestershire village of Fleckney.

The property benefits from being fully rewired in 2024, brand new central heating system in 2024 along with the full refurbishment of the house.

The property briefly comprises of; lounge/diner, kitchen and bathroom to the ground floor. Whilst the first floor offers two good size bedrooms.

Outside there is an open rear garden space.

- Two Double Bedrooms
- No Upward Chain!
- End Terrace House
- Newly Refurbished Throughout
- Brand New Kitchen & Bathroom
- Rewired & New Central Heating.
- GSH & UPVC Double Glazed
- Internet - Standard, & Super Fast - see ofcom checker for more details
- Council Tax Band A
- EPC Rating D



Location

Fleckney is a charming South Leicestershire village with a duck pond in the centre, in the Harborough district of the county lying approx. 9 miles south of Leicester city centre, 9 miles north of Market Harborough and only 2.5 miles west of the A6 which runs between the two. Surrounded by some of Leicestershire’s most beautiful countryside, Fleckney has a C of E primary school with a good ofsted report, secondary schools in nearby Oadby and Kibworth and The Leicester Grammar School in the neighbouring village of Great Glen.

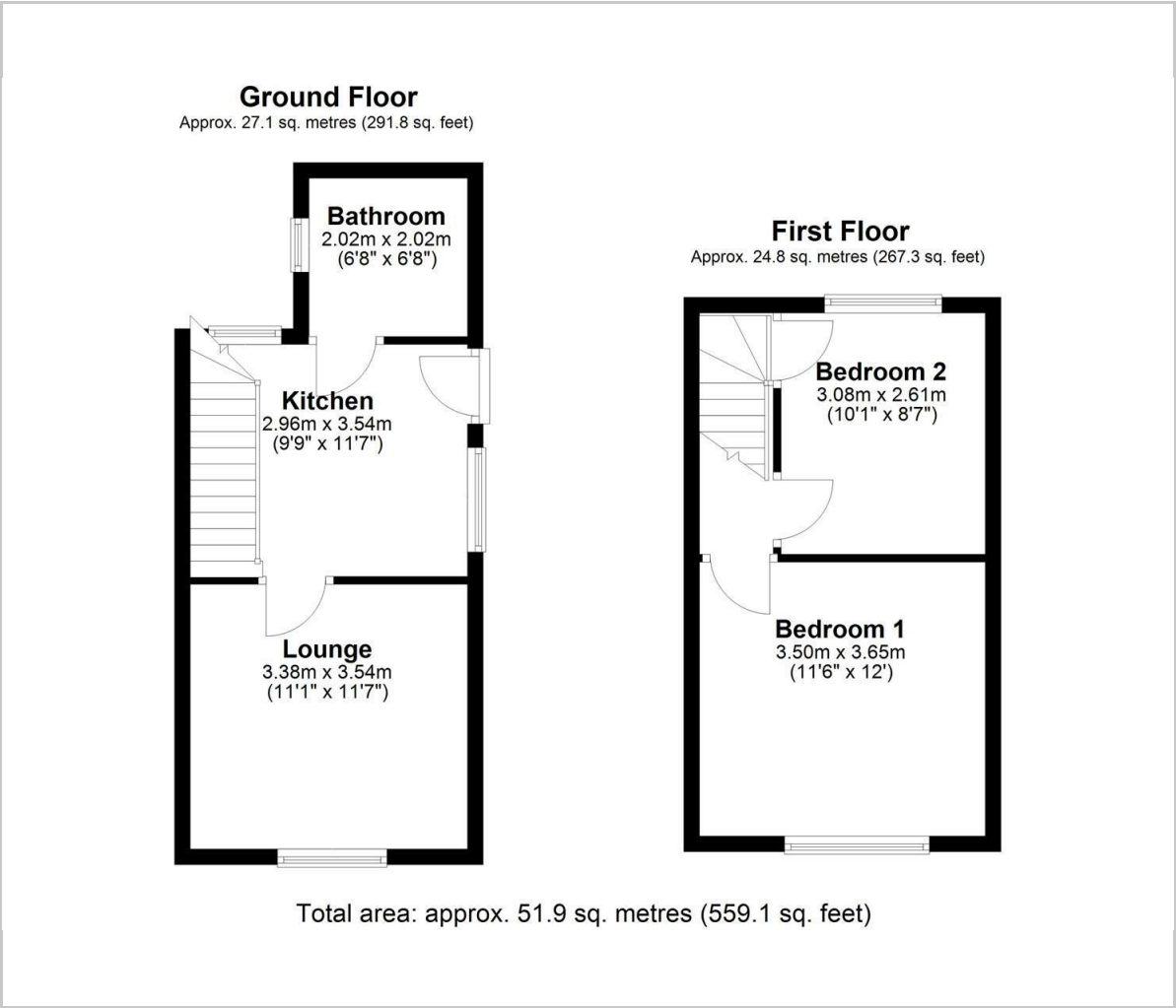
The village enjoys amenities including 2 public houses, cafes and take-aways, a co-op and a premier convenience store, a news agent, village hall and a library with more day to day amenities in Kibworth, The Borough of Oadby and Wigston and Market Harborough.

There has been a recent program of electrification and line straightening of the railway lines in the area allowing travel from Market Harborough to London St. Pancras in less than 1 hour.

Fleckney has over the years become very popular with local buyers as well as those from further afield.



Floor Plan



Viewing

Please contact our Wigston Sales Office on 0116 2883872 if you wish to arrange a viewing appointment for this property or require further information.

These particulars, whilst believed to be accurate are set out as a general outline only for guidance and do not constitute any part of an offer or contract. Intending purchasers should not rely on them as statements of representation of fact, but must satisfy themselves by inspection or otherwise as to their accuracy. No person in this firms employment has the authority to make or give any representation or warranty in respect of the property.

Aston & Co Estate Agents 67 Long Street, Wigston, Leicestershire, LE18 2AJ
Tel: 0116 2883872 Email: info@astonandco.co.uk <https://astonandco.co.uk/>

Area Map



Energy Efficiency Graph

