



## Peakdale Avenue, Cheadle,

---

 4 |  1 |  2

Asking  
price

£485,000



## Property Details

# Peakdale Avenue, Cheadle,

Nestled in a highly sought-after location in Heald Green, this stunning four-bedroom dormer bungalow offers the perfect blend of modern living and versatile space, ideal for families of all sizes.

Conveniently situated within close proximity to Heald Green village, the popular Manchester Padel Club, Manchester Airport and excellent local transport links, the property provides both accessibility and a peaceful residential setting.

The accommodation is thoughtfully arranged, with two well-proportioned bedrooms located on the ground floor, offering flexibility for guests, home working, or multi-generational living. The heart of the home is the beautifully presented, newly fitted kitchen diner, perfect for both everyday family life and entertaining. A spacious living room, complete with a charming log burner, creates a warm and inviting atmosphere, while a separate utility room adds practicality.

On the first floor, you will find two further generous bedrooms, providing ample space and privacy.

Externally, the property continues to impress with a lovely rear garden, ideal for relaxing or entertaining, alongside a garage and a large driveway offering off-road parking for multiple vehicles.

This exceptional home combines style, space, and a prime location, no onward chain making it a fantastic opportunity not to be missed.

## Key Features

- Stunning Four bedroom Dormer Bungalow
- Highly sought-after Heald Green location
- Close to Manchester Padel Club, Heald Green village & Manchester Airport
- Excellent access to transport links
- Versatile layout with two double bedrooms to the ground floor
- Separate utility room for added convenience
- Newly fitted modern kitchen diner
- Ideal family home with flexible living accommodation
- Garage providing additional storage
- no onward chain - making it a quick sale

**Kitchen**

4m X 3m

**Reception One**

4.22m x 3.69m

**Bedroom One**

3.71m x 3m

**Bedroom Two**

3.65m x 2.51m

**Utility Room**

3.43m x 2m

**Bedroom Three**

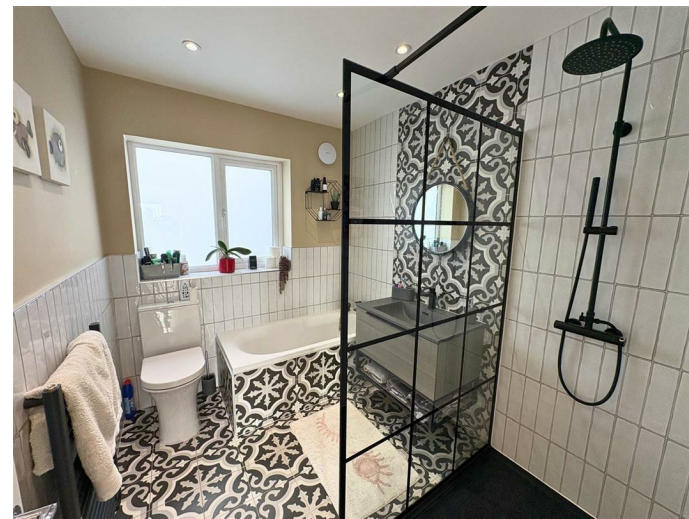
4.59m x 3.27m

**Bedroom Four**

4.59m x 3.9m

**Bathroom**

2.49m x 2.02m

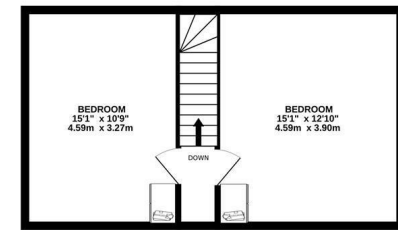
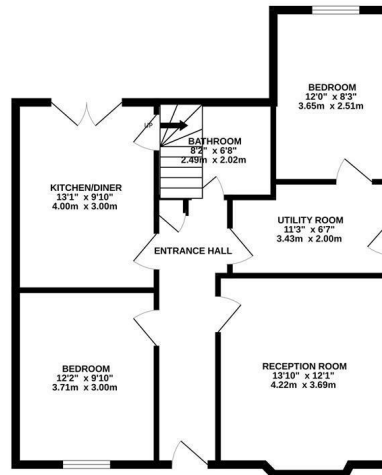


At Spencer Harvey, we are delighted to say that we are independent estate agents, which means that we will put your needs first at all times. If you want to learn more about why we are amongst the fastest growing independent estate agents in Manchester, please get in touch to arrange an appointment.



GROUND FLOOR  
720 sq.ft. (66.9 sq.m.) approx.

1ST FLOOR  
395 sq.ft. (36.7 sq.m.) approx.




TOTAL FLOOR AREA : 1115 sq.ft. (103.6 sq.m.) approx.

Whilst every attempt has been made to ensure the accuracy of the floorplan contained here, measurements of doors, windows, rooms and any other items are approximate and no responsibility is taken for any error, omission or mis-statement. This plan is for illustrative purposes only and should be used as such by any prospective purchaser. The services, systems and appliances shown have not been tested and no guarantee as to their operability or efficiency can be given.  
Made with Metropix ©2025



## Contact Us

 137 Shaw Heath Stockport

 0161 480 8888

 Sales@spencerharvey.co.uk

www.spencerharvey.co.uk

OR SEND US A  
MESSAGE



**COUNCIL TAX BAND:**  
D

**TENURE:**  
Freehold

**EPC RATING:**

**LOCAL AUTHORITY:**  
Stockport