



# Lloyd Street Stockport



£195,000

2 | 1 | 1

SEND US A  
MESSAGE



**SPENCER  
HARVEY**

PASSIONATE ABOUT PROPERTY



Energy Efficiency Rating		Current	Potential
Very energy efficient - lower running costs			
(92 plus) <b>A</b>			<b>88</b>
(81-91) <b>B</b>			
(69-80) <b>C</b>			
(55-68) <b>D</b>		<b>60</b>	
(39-54) <b>E</b>			
(21-38) <b>F</b>			
(1-20) <b>G</b>			
Not energy efficient - higher running costs			
<b>England &amp; Wales</b>			EU Directive 2002/91/EC

## PROPERTY DESCRIPTION

Beautifully Presented Two Bedroom Mid-Terrace, Newly Decorated Throughout & New Carpets – No Vendor Chain

Spencer Harvey is delighted to bring to the market this well-proportioned, garden-fronted two-bedroom mid-terrace, offered with NO VENDOR CHAIN, making it an ideal purchase for first-time buyers or investors.

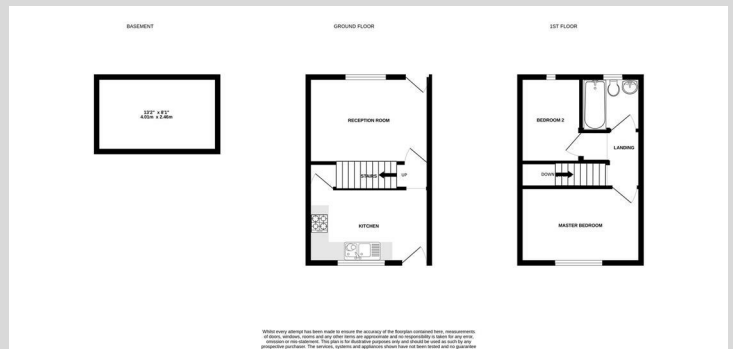
Perfectly positioned in a popular and convenient location, the property offers excellent access to public transport links, the motorway network, and Stockport town centre, with its fantastic range of shops, bars, and amenities.

The accommodation comprises a welcoming lounge, a modern kitchen fitted with a range of units and a built-in oven and hob. On the first floor, you'll find a generous principal bedroom, a second bedroom, and a bright bathroom complete with a white three-piece suite.

Freshly decorated and with new carpets throughout, this charming period terrace is ready to move into. A must-see property to fully appreciate the space and quality on offer.

## KEY FEATURES

- No Vendor Chain
- Close to Amenities
- 2 Double bedrooms



EPC RATING:  
**D**

COUNCIL TAX  
BAND:  
**A**

