



## Louisa Mews, Manchester,

---

 4 |  2 |  1

£245,000



## Property Details

# Louisa Mews, Manchester,

## Key Features

Stunning 4-Bedroom Modern Mews Home – Dane Bank

Situated in the ever-popular Dane Bank area, this well-presented four-bedroom home offers stylish, versatile living set across three spacious floors.

The property boasts a bright open-plan living, dining and kitchen area, complete with modern fittings and patio doors leading directly onto the rear garden, which is mainly laid to lawn – perfect for families and entertaining. A separate utility room and downstairs W.C. add further practicality.

Upstairs, the home continues to impress with a generously sized main bedroom featuring a private ensuite, along with three further bedrooms and a modern family bathroom.

Externally, the garden provides a safe and sunny retreat, ideal for children or those who enjoy outdoor living.

With its contemporary layout, spacious accommodation, and sought-after location close to schools, transport links, and local amenities, this property is perfect for growing families or professionals.

### Open Plan Kitchen Living Room

Open plan living room, dining room, kitchen. Patio doors through to enclosed rear garden. Utility room and downstairs WC

### Bedroom One

Bedroom with en-suite shower room, views over front aspect

### Bedroom Two

Double bedroom with views over rear aspect

### Bathroom

Bathroom with 3 piece white suite, shower over bath

### Bedroom Three

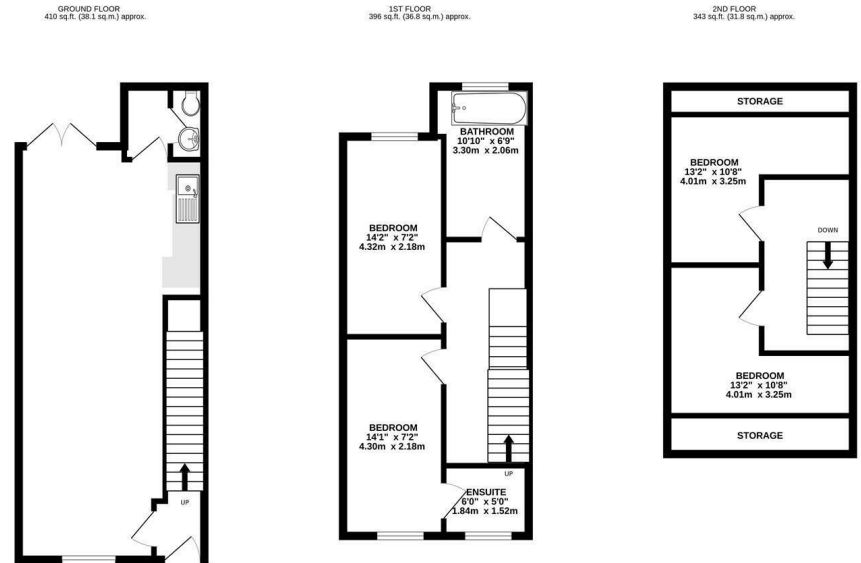
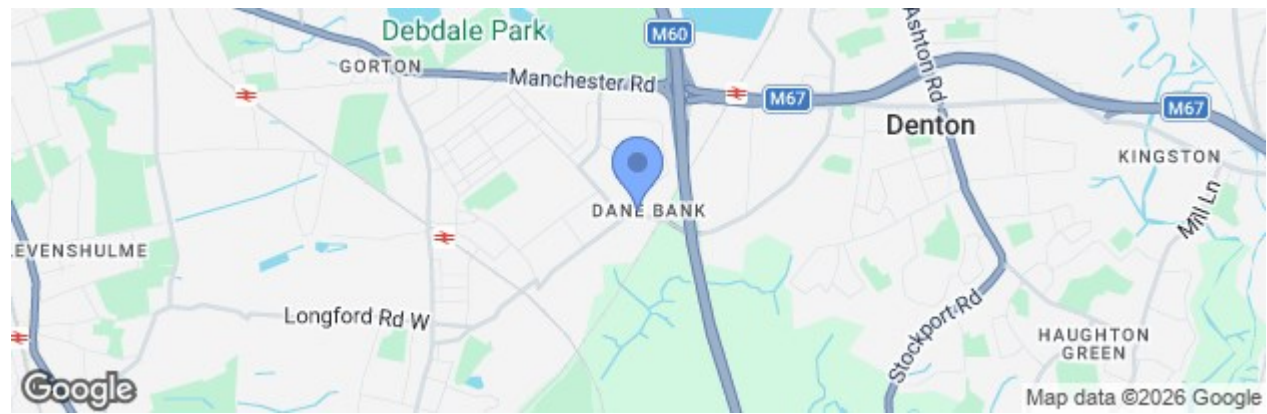
Double bedroom with velux style window and storage in the eaves

### Bedroom Four

Double bedroom with velux style window and eaves storage



At Spencer Harvey, we are delighted to say that we are independent estate agents, which means that we will put your needs first at all times. If you want to learn more about why we are amongst the fastest growing independent estate agents in Manchester, please get in touch to arrange an appointment.



TOTAL FLOOR AREA : 1148 sq ft. (106.7 sq.m.) approx.  
Whilst every attempt has been made to ensure the accuracy of the floorplan contained here, measurements of doors, windows, rooms and any other items are approximate and no responsibility is taken for any error, omission or misstatement. This plan is for illustrative purposes only and should be used as such by any prospective purchaser. The structure, fixtures and appliances shown have not been tested and no guarantee as to their operability or efficiency can be given.  
Made with Metapic 12/25



## Contact Us

 137 Shaw Heath Stockport

 0161 480 8888

 Sales@spencerharvey.co.uk

www.spencerharvey.co.uk

OR SEND US A  
MESSAGE



**COUNCIL TAX BAND:**

C

**TENURE:**

Freehold

**EPC RATING:**

C

**LOCAL AUTHORITY:**

Denton