



Thomson Street

Stockport



£106,250



SEND US A MESSAGE



 **SPENCER HARVEY**
PASSIONATE ABOUT PROPERTY



Energy Efficiency Rating		Current	Potential
Very energy efficient - lower running costs			
(92 plus) A			
(81-91) B			
(69-80) C			77
(55-68) D		57	
(39-54) E			
(21-38) F			
(1-20) G			
Not energy efficient - higher running costs			
England & Wales		EU Directive 2002/91/EC	

PROPERTY DESCRIPTION

75% SHARED OWNERSHIP.

Stylish Top Floor Two-Bedroom Apartment in the Heart of Stockport

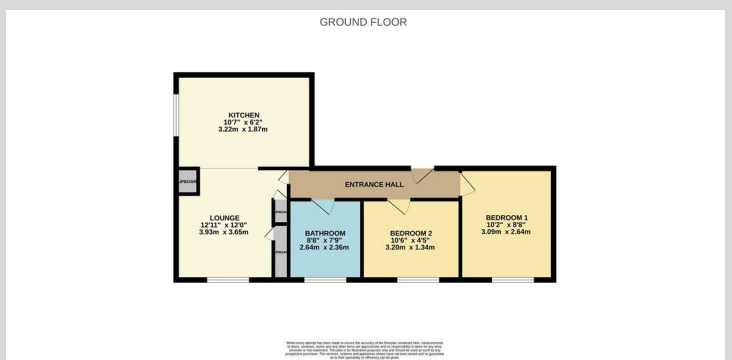
Situated in one of Stockport's most sought-after developments, this well presented top floor apartment offers the perfect blend of town centre convenience and contemporary living.

Located just moments from everything Stockport has to offer, including the vibrant Foodie Friday, excellent shopping, cafes, restaurants, and the brand-new interchange with fantastic transport links, this home is ideally positioned for modern urban living.

The building benefits from lift access, and the apartment itself includes an allocated parking space, a true luxury in the town centre. Inside, you'll find a spacious open-plan kitchen and living area, perfect for relaxing or entertaining, two generous bedrooms, and a modern bathroom.

KEY FEATURES

- 75% SHARED OWNERSHIP
- TOP FLOOR APARTMENT
- GREAT TOWN CENTRE LOCATION
- TWO BEDROOMS
- ALLOCATED PARKING SPACE
- NO VENDOR CHAIN
- VIEWING HIGHLY RECOMMENDED !!



EPC RATING:
D

COUNCIL TAX BAND:
B