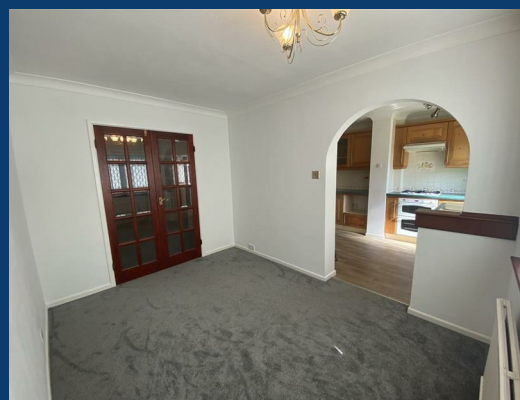
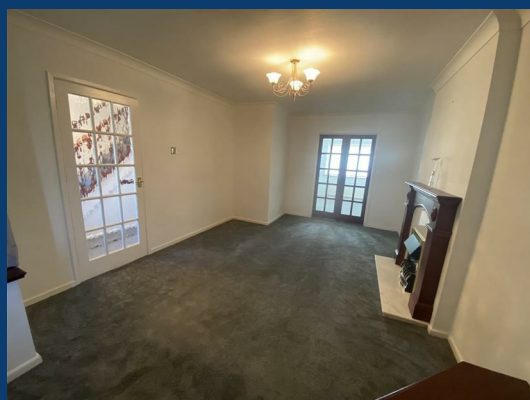




# Brookfield Close

## Stockport



£295,000

3 | 1 | 1

SEND US A  
MESSAGE



SPENCER  
HARVEY

PASSIONATE ABOUT PROPERTY





Energy Efficiency Rating		
	Current	Potential
Very energy efficient - lower running costs		
(92 plus) A		
(81-91) B		
(69-80) C		
(55-68) D		
(39-54) E	51	70
(21-38) F		
(1-20) G		
Not energy efficient - higher running costs		
England & Wales		EU Directive 2002/91/EC

## PROPERTY DESCRIPTION

Charming 3-Bedroom Semi-Detached Home in Sought-After Brookfield Close, Stockport

Welcome to this delightful semi-detached property, ideally situated on the ever-popular Brookfield Close in Stockport. This well-presented home offers spacious and versatile accommodation, perfect for families, first-time buyers, or those looking to downsize.

Inside, you'll find a generous reception room, ideal for entertaining or relaxing in comfort and a super kitchen featuring a range of eye and base level units and is open to the dining room. The property offers three well-proportioned bedrooms — two doubles and a single — along with a well-maintained family bathroom.

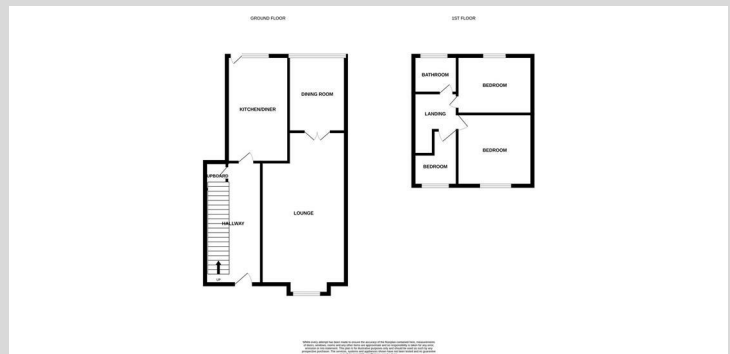
Outside, the home really shines, featuring a lovely rear garden that's perfect for summer barbecues, family playtime, or simply unwinding in a peaceful setting. The front of the property offers a private driveway and a garage, providing parking for two vehicles and additional storage space.

Tucked away in a quiet and friendly cul-de-sac, yet close to excellent amenities, schools, and transport links, this home offers the perfect balance of tranquillity and convenience.

Don't miss out — this charming home is ready for you to move in and make your own.

## KEY FEATURES

- Charming Three Bed Semi in Sought after Offerton
- 2 double bedrooms and a single
- Garage
- Driveway
- Private Garden
- Unfurnished
- Spacious Living Room and Dining Room



EPC RATING:  
E

COUNCIL TAX  
BAND:  
A

