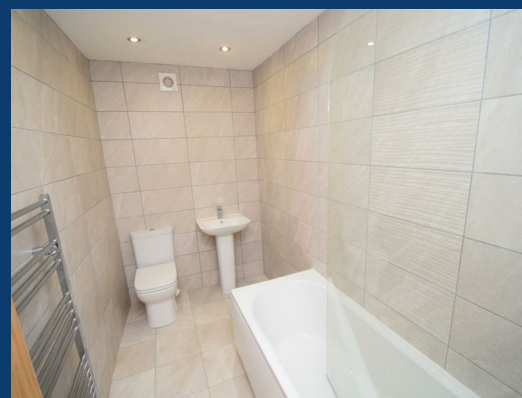




# St Marys Court

## Stockport

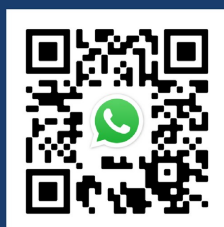
Impression



£825 Per month

1 | 1 | null


SEND US A  
MESSAGE



SPENCER  
HARVEY

PASSIONATE ABOUT PROPERTY



Energy Efficiency Rating		
	Current	Potential
Very energy efficient - lower running costs		
(92 plus) A		
(81-91) B		
(69-80) C		
(55-68) D		
(39-54) E		
(21-38) F		
(1-20) G		
Not energy efficient - higher running costs		
England & Wales		EU Directive 2002/91/EC 

# PROPERTY DESCRIPTION

Available January | Unfurnished | No Parking

These stunning apartments are truly one-of-a-kind, set within a listed building in a charming conservation area, right in the heart of the town centre. The location combines historic character with modern convenience, surrounded by unique independent shops and just steps from the town's historic market, perfect for a Friday foodie stroll!

Ideal for those who love vibrant town centre living, you'll find an eclectic mix of boutiques and cafés right outside your door, with the main Merseyway shopping centre offering a wide range of high street stores just around the corner. For a taste of the outdoors, the beautiful Vernon Park and local museum are within walking distance, or explore the picturesque Cheshire countryside nearby.

1 BED 1 BATH Modern Apartment

Please note: no parking is available.

UNFURNISHED | £825 p/m | JANUARY 2026

## KEY FEATURES

- Available January
- Central Location
- One Bedroom
- EPC B
- No Parking

## LET AVAILABLE DATE:

22nd January 2026

DEPOSIT: £951

MIN TENANCY: Add Text

LET TYPE: Add Text

FURNISH TYPE: Unfurnished

EPC RATING:

COUNCIL TAX

BAND:

A

