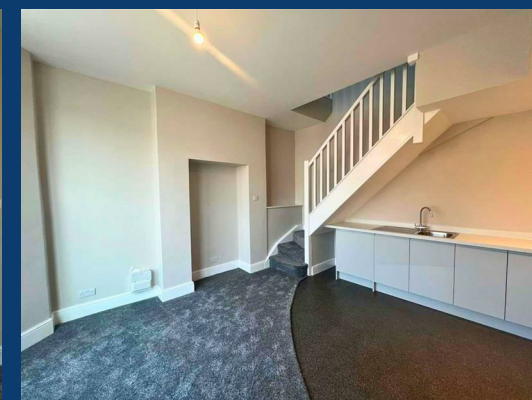
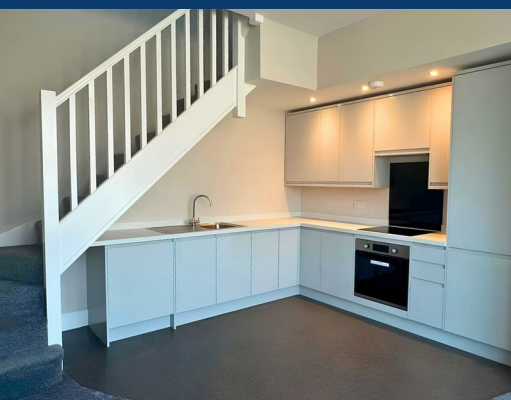




Wellington Road South

Stockport



£900 Per month

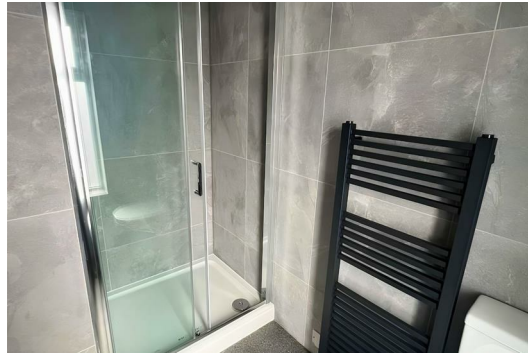



SEND US A MESSAGE



SPENCER HARVEY

PASSIONATE ABOUT PROPERTY



Energy Efficiency Rating		Current	Potential
Very energy efficient - lower running costs			
(92 plus)	A		
(81-91)	B		
(69-80)	C		
(55-68)	D		
(39-54)	E		
(21-38)	F		
(1-20)	G		
Not energy efficient - higher running costs			
England & Wales			EU Directive 2002/91/EC 

PROPERTY DESCRIPTION

AVAILABLE NOW

Recently renovated throughout, this beautifully presented one-bedroom apartment offers a stylish, thoughtfully designed layout, making it an ideal home for professionals or couples.

The bright open-plan living space seamlessly combines the lounge, dining and kitchen areas, creating a welcoming environment that's perfect for both relaxing and entertaining. The modern kitchen comes complete with integrated appliances, including a fridge/freezer, dishwasher and washer/dryer, providing everything you need from day one.

The spacious double bedroom offers a comfortable retreat, while the bathroom is finished with modern fixtures and fittings that complement the apartment's renovation.

Further benefits include an allocated parking space, secure bike storage and immediate availability, allowing you to move straight in.

Situated in a convenient location with excellent local amenities and transport links nearby, this is an exceptional opportunity to enjoy modern, low-maintenance living.

KEY FEATURES

LET AVAILABLE DATE:

10th July 2026

DEPOSIT: £1,038

MIN TENANCY: Add Text

LET TYPE: Add Text

FURNISH TYPE: Not specified

EPC RATING:

COUNCIL TAX

BAND:

A

