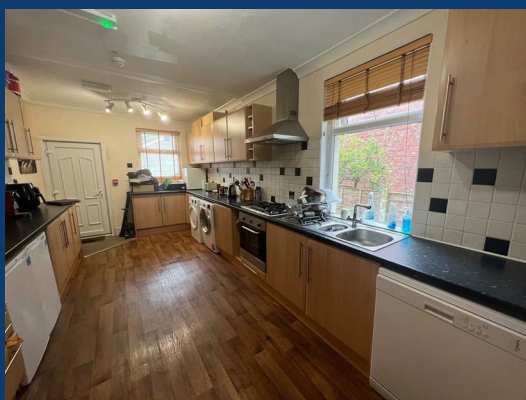




# Shaw Heath Stockport



£575 Per month



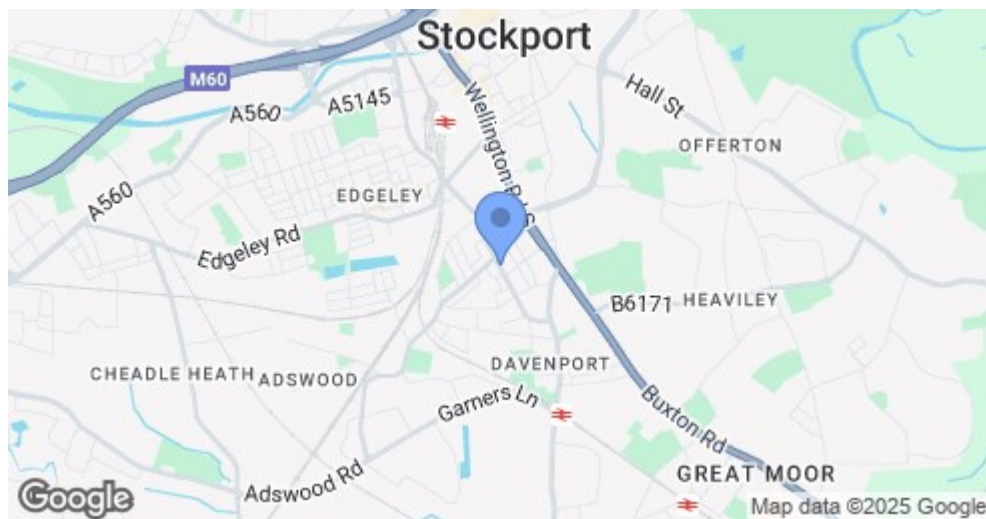
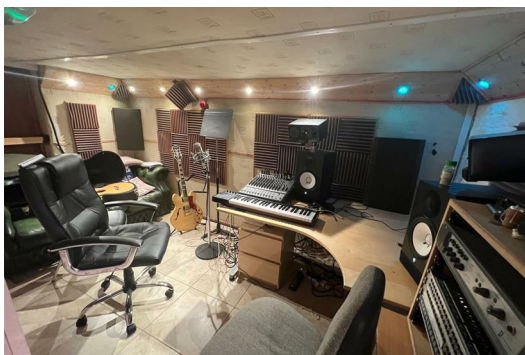
SEND US A  
MESSAGE



SPENCER  
HARVEY

PASSIONATE ABOUT PROPERTY





Energy Efficiency Rating		
	Current	Potential
Very energy efficient - lower running costs		
(92 plus) A		
(81-91) B		
(69-80) C		78
(55-68) D		
(39-54) E	54	
(21-38) F		
(1-20) G		
Not energy efficient - higher running costs		
England & Wales	EU Directive 2002/91/EC	

## PROPERTY DESCRIPTION

\*ROOM SHARE ACCOMMODATION\* \*RENT INCLUSIVE OF BILLS\* ENSUITE\* AVAILABLE OCTOBER\*

FIRST floor FURNISHED, DOUBLE BEDROOM with ENSUITE SHOWER ROOM to rent in this PROFESSIONAL house share accommodation!

The property is positioned in a CONVENIENT location within walking distance of Stockport Railway Station suitable for the regular commuter, shops suitable for daily needs and bus routes direct into Stockport, Manchester and beyond are also close at hand.

This SPACIOUS shared home has a communal living area, a large galley fitted kitchen complete with appliances, shower room. Externally there is a shared communal yard area.

Viewings come highly recommended to fully appreciate the accommodation on offer. Call TODAY to arrange your viewing. Do NOT miss out.

This property is suitable for one applicant only!

### KEY FEATURES

- Inclusive of all bills
- En-Suite room
- Available October
- Ideal location for transport
- Furnished
- Suitable for 1 applicant only

### LET AVAILABLE DATE:

13th October 2025

DEPOSIT:£663

MIN TENANCY: Add Text

LET TYPE: Add Text

FURNISH TYPE: Furnished

EPC RATING:

E

COUNCIL TAX

BAND:

B

