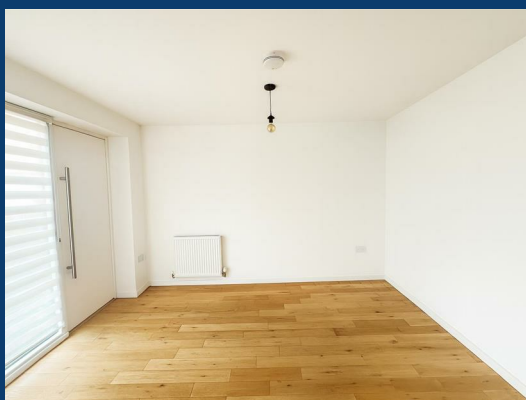




Mill Terrace

Stockport



£1,200 Per month

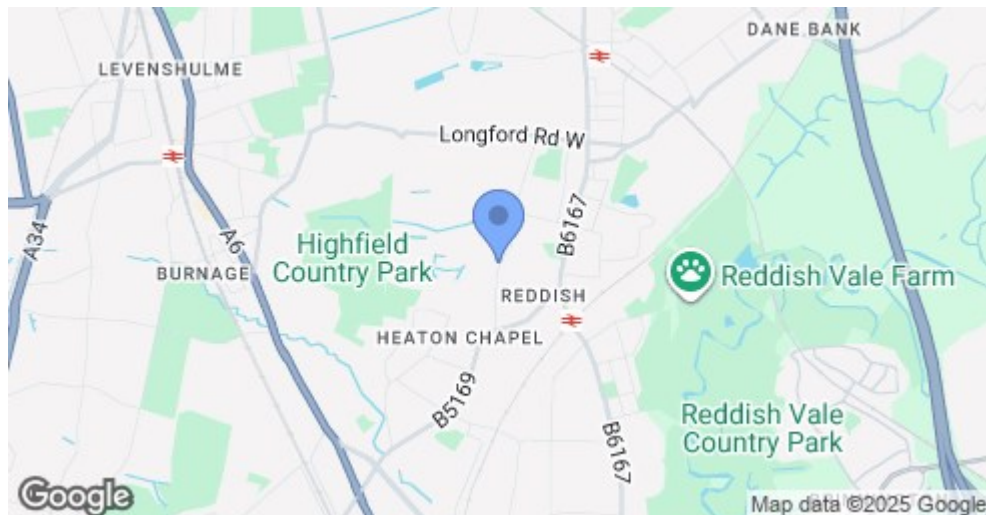
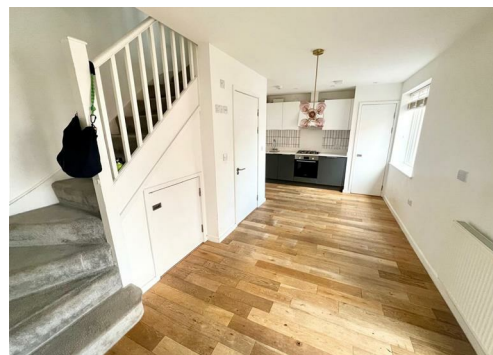
2 | 2 | 1


SEND US A
MESSAGE



SPENCER
HARVEY

PASSIONATE ABOUT PROPERTY



Energy Efficiency Rating		
	Current	Potential
Very energy efficient - lower running costs		
(92 plus) A		93
(81-91) B		
(69-80) C	79	
(55-68) D		
(39-54) E		
(21-38) F		
(1-20) G		
Not energy efficient - higher running costs		
England & Wales	EU Directive 2002/91/EC 	

PROPERTY DESCRIPTION

Available Now – Two-Bedroom End-Terrace with Private Parking in a Gated Community

A modern two-bedroom end-terrace home, built in 2019, set within a secure gated development only a short walk from Houldsworth Square.

The ground floor offers a light and spacious lounge, a contemporary open-plan kitchen with dining area, and a convenient downstairs W.C. Upstairs, there are two generous double bedrooms alongside a modern family bathroom.

The property also benefits from a well-kept front garden and an allocated private parking space.

Located within easy reach of shops, cafés, schools, Houldsworth Golf Club, and excellent transport links, this home is ideal for tenants looking for both comfort and convenience.

KEY FEATURES

- Available now
- Secure gated community
- Two double bedrooms
- Spacious lounge
- Modern open-plan kitchen with dining area
- Downstairs W.C.
- Contemporary family bathroom
- Private allocated parking
- Neat front garden
- Excellent local amenities and transport links nearby

LET AVAILABLE DATE:

22nd September 2025

DEPOSIT: £1,384

MIN TENANCY: Add Text

LET TYPE: Add Text

FURNISH TYPE: Unfurnished

EPC RATING:

C

COUNCIL TAX

BAND:

C

