



# School Lane

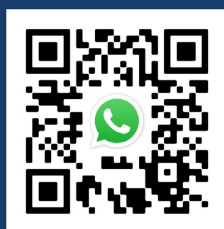
## Stockport



£975 Per month



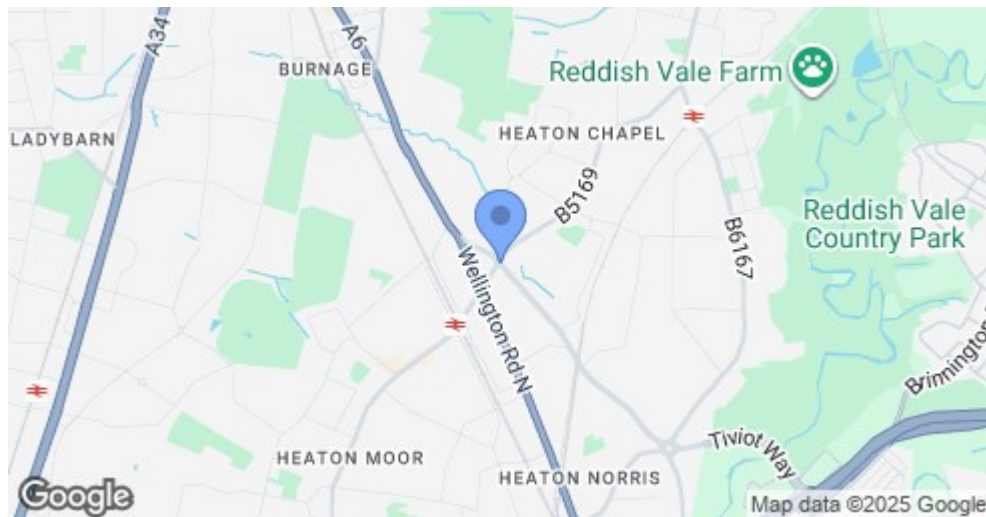
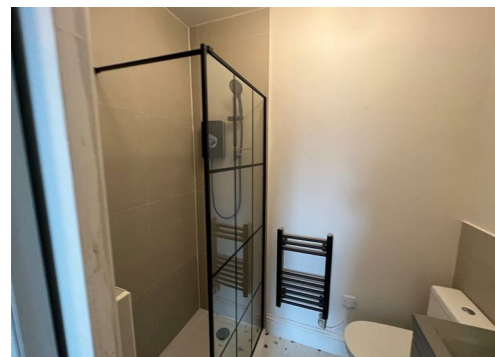
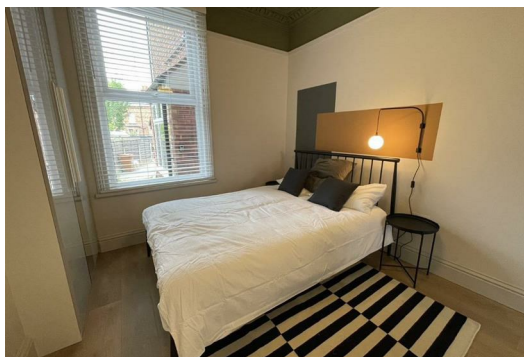
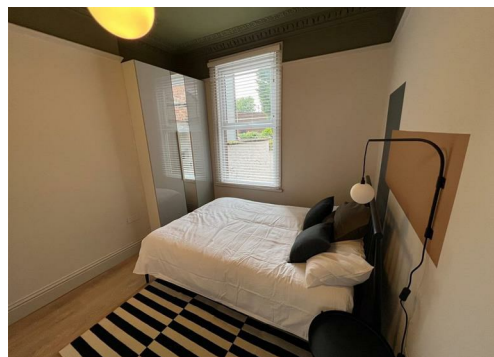
SEND US A  
MESSAGE



SPENCER  
HARVEY

PASSIONATE ABOUT PROPERTY





Energy Efficiency Rating		
	Current	Potential
Very energy efficient - lower running costs		
(92 plus) A		
(81-91) B		
(69-80) C		78
(55-68) D		
(39-54) E	45	
(21-38) F		
(1-20) G		
Not energy efficient - higher running costs		
England & Wales	EU Directive 2002/91/EC	

## PROPERTY DESCRIPTION

This immaculate ground floor fully furnished one bed apartment in one of the best locations in Heaton Chapel is available September!

Located just a short walk to the train station and off the main A6, this spacious flat comprises of shared entrance hall, large lounge with bay window and packed with original features.

It boasts a fully fitted kitchen with granite worktops, electric hob and integrated combi oven and fridge freezer. The large bedroom off the living space comfortably fits a double bed, with featured bedside wall mounted lighting and modern inbuilt wardrobes.

Off the bedroom is a renovated en suite bathroom with ultra-modern black suite and shower.

Take your opportunity to rent this ultra-stylish, never been lived in beautiful apartment now – the best bit? All bills are included apart from electric! (council tax band C)

This property certainly won't be around for long...Call today to book your viewing with Spencer Harvey!

### KEY FEATURES

- Available September
- Fully Furnished
- Bills included (except electric)
- Parking on a first come first serve basis
- Close to local amenities

**LET AVAILABLE DATE:**

**2nd September 2025**

**DEPOSIT:£1,125**

**MIN TENANCY: Add Text**

**LET TYPE: Add Text**

**FURNISH TYPE: Furnished**

**EPC RATING:**

**E**

**COUNCIL TAX**

**BAND:**

**C**



[www.spencerharvey.co.uk](http://www.spencerharvey.co.uk) | [lettings@spencerharvey.co.uk](mailto:lettings@spencerharvey.co.uk) | 0161 480 8888

