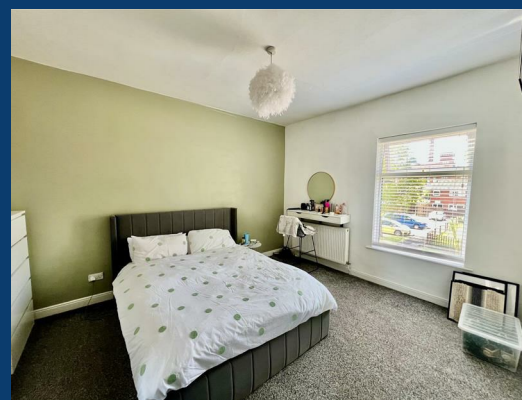
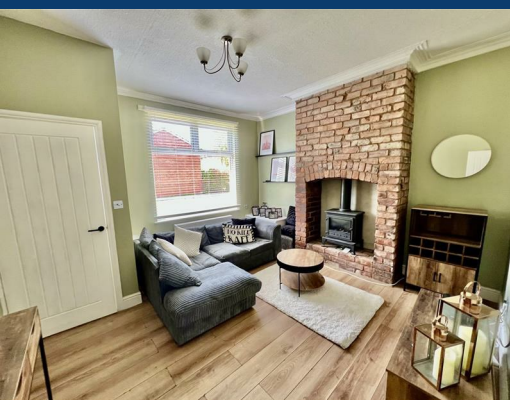




Bedford Street

Stockport



£1,100 Per month

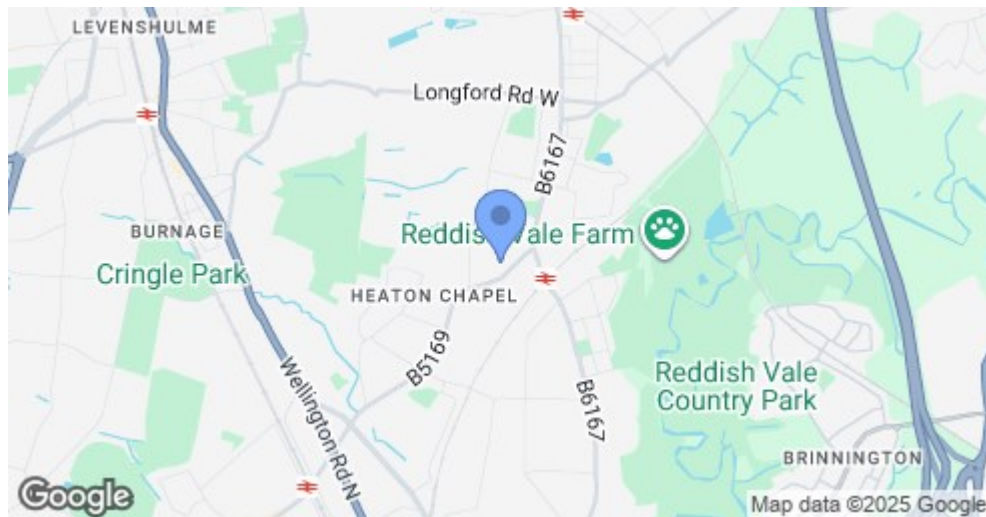
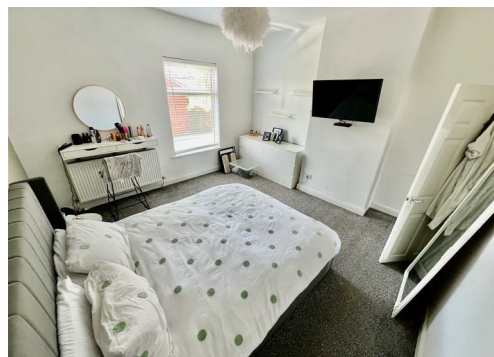
2 | 1 | 1

SEND US A
MESSAGE



SPENCER
HARVEY

PASSIONATE ABOUT PROPERTY



Energy Efficiency Rating		
	Current	Potential
Very energy efficient - lower running costs		
(92 plus) A		
(81-91) B		
(69-80) C		
(55-68) D	68	79
(39-54) E		
(21-38) F		
(1-20) G		
Not energy efficient - higher running costs		
England & Wales	EU Directive 2002/91/EC	

PROPERTY DESCRIPTION

Welcome to this stunning two-bedroom mid-terrace home, perfectly positioned in a desirable part of Reddish. Tastefully decorated and ready to move into, this charming property combines stylish features with practical living space—ideal for first-time buyers, young professionals, or small families.

Spacious Living Room with feature exposed brick chimney breast and cosy wood burner—a perfect spot to relax and unwind.

Large Open-Plan Kitchen Diner offering ample space for cooking, dining, and entertaining. Modern units and generous countertops create a functional and sociable heart to the home.

Two Double Bedrooms – both bright and well-proportioned, offering plenty of room for furniture and storage.

Contemporary Family Bathroom with modern fittings and a clean, stylish finish.

Low-Maintenance Rear Yard featuring a raised decked seating area—a peaceful outdoor space for dining al fresco or enjoying your morning coffee.

KEY FEATURES

- Available Now
- Well presented throughout
- Low maintenance back garden
- Unfurnished
- On street parking
- Popular Reddish Location

LET AVAILABLE DATE:

15th August 2025

DEPOSIT: £1,269

MIN TENANCY: Add Text

LET TYPE: Add Text

FURNISH TYPE: Unfurnished

EPC RATING:

D

COUNCIL TAX

BAND:

A



www.spencerharvey.co.uk | lettings@spencerharvey.co.uk | 0161 480 8888

