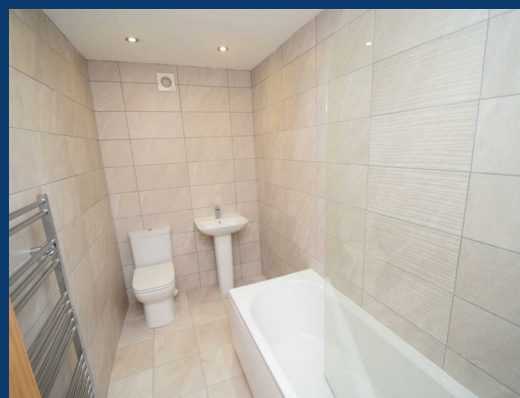




St Marys Court

Stockport

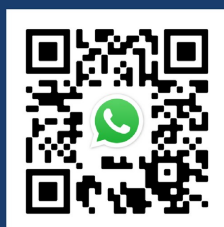
Impression



£825 Per month

1 | 1 | null


SEND US A
MESSAGE



SPENCER
HARVEY

PASSIONATE ABOUT PROPERTY



Energy Efficiency Rating		
	Current	Potential
Very energy efficient - lower running costs		
(92 plus) A		
(81-91) B		
(69-80) C		
(55-68) D		
(39-54) E		
(21-38) F		
(1-20) G		
Not energy efficient - higher running costs		
England & Wales	EU Directive 2002/91/EC 	

PROPERTY DESCRIPTION

Available January! Unfurnished! No parking

These beautiful apartments are absolutely unique, set in a listed building within a conservation area right in the heart of the town centre. This area is a superb residential location with stunning local architecture, in what has become a quirky shopping centre, with an abundance of one off shops, and just a few strides from the historic town market (Foodie Friday is a must from this distance!).

Ideal for those who love town centre living, you are in the old town centre with its eclectic mix of shops as soon as you exit the building, with the main Merseyway shopping centre offering a huge range of high street shops just around the corner. If you want a slice of the countryside, the local Vernon park and museum is within walking distance, or you could head out into the famous Cheshire countryside

No Parking Available

KEY FEATURES

- Available January
- Central Location
- One Bedroom
- EPC B
- No Parking

LET AVAILABLE DATE:

22nd January 2026

DEPOSIT: £951

MIN TENANCY: Add Text

LET TYPE: Add Text

FURNISH TYPE: Unfurnished

EPC RATING:

COUNCIL TAX

BAND:

A

