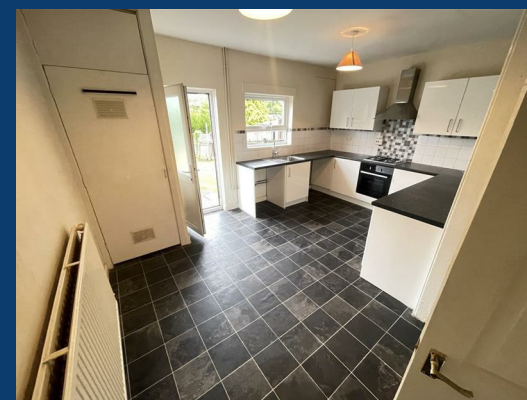
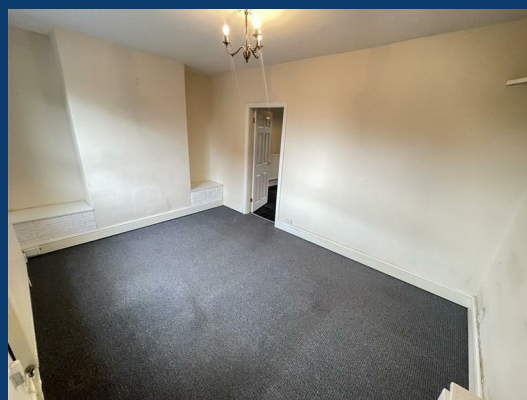
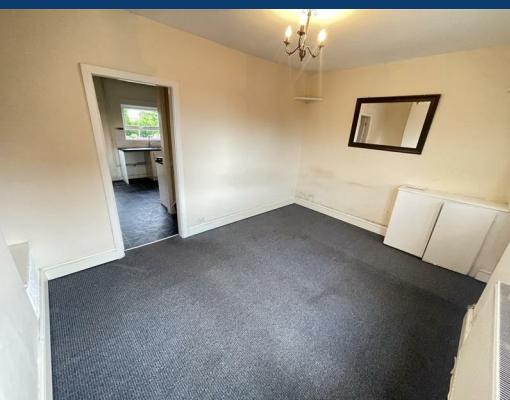




16 Doris Road

Stockport



£1,250

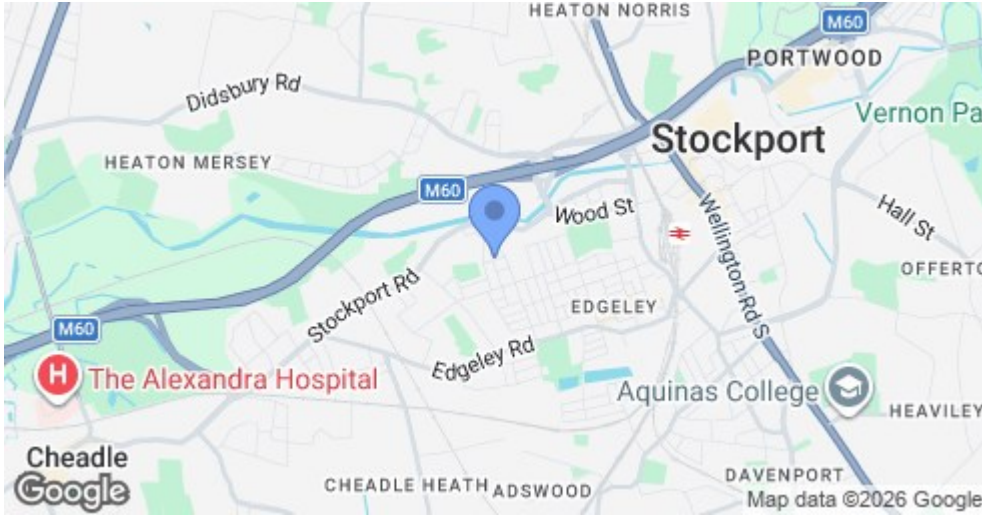
3 | 1 | null


SEND US A MESSAGE



SPENCER HARVEY

PASSIONATE ABOUT PROPERTY



Energy Efficiency Rating		Current	Potential
Very energy efficient - lower running costs			
(92 plus)	A		
(81-91)	B		87
(69-80)	C	69	
(55-68)	D		
(39-54)	E		
(21-38)	F		
(1-20)	G		
Not energy efficient - higher running costs			
England & Wales		EU Directive 2002/91/EC 	

PROPERTY DESCRIPTION

****AVAILABLE MID JULY****

Well presented three double bedroom mid terrace home to rent!!

Positioned in the popular location of Edgeley, the area boasts a range of social and recreational facilities including schools catering for all ages, transport links direct into Stockport and Manchester and a range of convenience stores suitable for daily needs.

Internally this home offers: A good-sized reception room and a large fitted kitchen/ diner to the ground floor. To the first floor there are three double sized bedrooms and a white bathroom suite complete with shower over the bath.

Externally there is a rear garden with lawned area. Available to rent on an unfurnished basis.

KEY FEATURES

LET AVAILABLE DATE:

24th July 2026

DEPOSIT: £1,442

MIN TENANCY: Add Text

LET TYPE: Add Text

FURNISH TYPE: Not specified

EPC RATING:

C

COUNCIL TAX

BAND:

A

