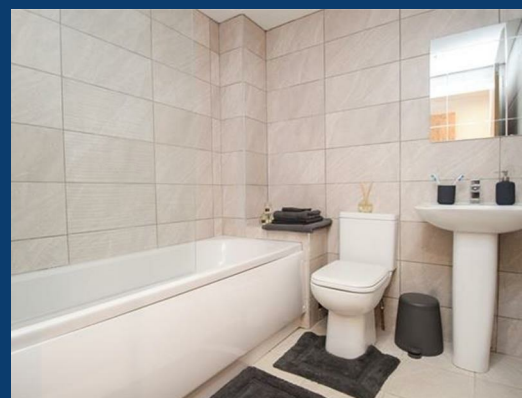




St Mary's Court

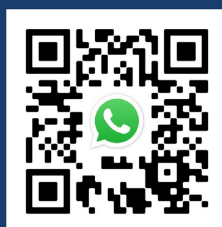
Stockport



£825 Per month




SEND US A
MESSAGE



SPENCER
HARVEY

PASSIONATE ABOUT PROPERTY



Energy Efficiency Rating		
	Current	Potential
Very energy efficient - lower running costs		
(92 plus) A		
(81-91) B		
(69-80) C		
(55-68) D		
(39-54) E		
(21-38) F		
(1-20) G		
Not energy efficient - higher running costs		
England & Wales	EU Directive 2002/91/EC 	

PROPERTY DESCRIPTION

What a fabulous opportunity to live in this stylish and characterful one-bedroom apartment, set within a unique listed building in a conservation area. This beautifully presented property combines traditional architectural features with sleek, modern interiors, creating a home full of personality and charm. Offered on an unfurnished basis, it's available from September and is perfect for professionals seeking contemporary living in a vibrant location.

Located in the heart of Stockport town centre, the apartment is just a short stroll from independent shops, cafés, and the historic town market – making Foodie Friday a must! While there is no parking, the central location more than makes up for it, with excellent access to local transport links and amenities.

In brief, the property comprises:

- Entrance hall
- Open-plan living/dining area
- Modern fitted kitchen

KEY FEATURES

- White goods included
- Available September
- Second Floor
- No Parking available
- Close to transport links

LET AVAILABLE DATE:

20th September 2025

DEPOSIT: £951

MIN TENANCY: Add Text

LET TYPE: Add Text

FURNISH TYPE: Unfurnished

EPC RATING:

COUNCIL TAX

BAND:

A

