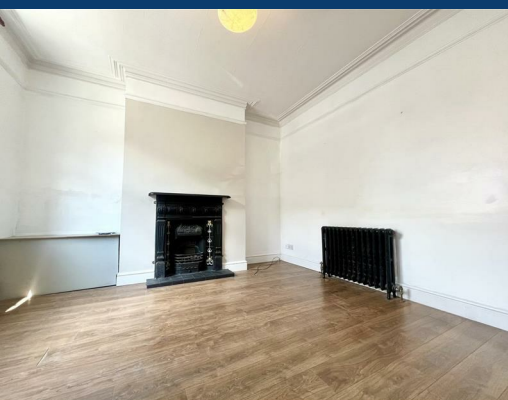




Lime Grove

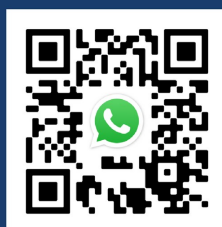
Manchester



£975 Per month

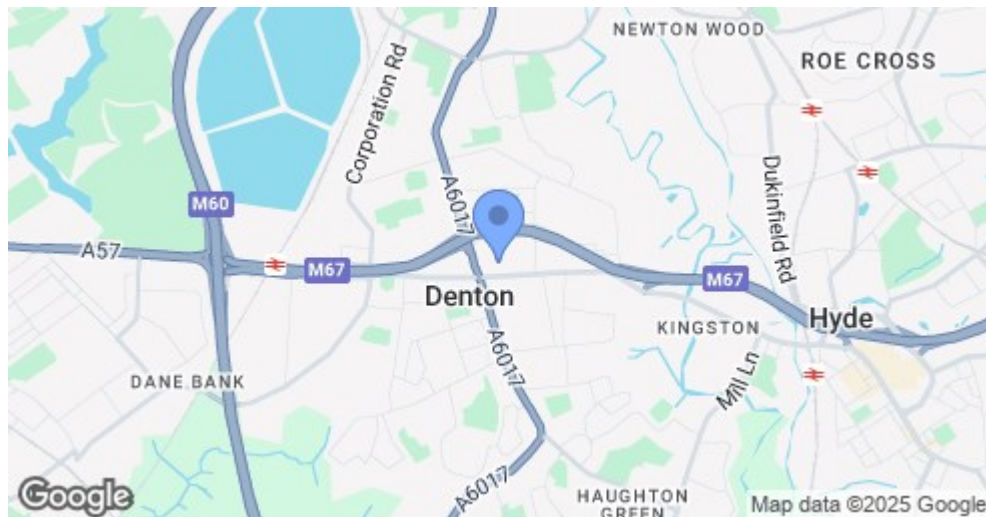
2 | 1 | 1

SEND US A
MESSAGE



SPENCER
HARVEY

PASSIONATE ABOUT PROPERTY



Energy Efficiency Rating		
	Current	Potential
Very energy efficient - lower running costs		
(92 plus) A		
(81-91) B		
(69-80) C		
(55-68) D		
(39-54) E		
(21-38) F		
(1-20) G		
Not energy efficient - higher running costs		
England & Wales	EU Directive 2002/91/EC	

PROPERTY DESCRIPTION

AVAILABLE OCTOBER! Great Transport links! Unfurnished

Boasting an impressive dining kitchen, lounge, two bedrooms and bathroom with four piece suite, UPVC double glazing, gas central heating system and courtyard style garden to the rear this really is the perfect starter home for a couple! The second bedroom is more of an office space so is ideal for someone working from home.

Lime Grove is situated with easy reach of the centre of Denton and its numerous shopping and recreational facilities with Tameside Wellness Centre just on the doorstep.

Please fill in a form to view! (sent via whatsapp)

KEY FEATURES

- Available August
- Unfurnished
- Great Transport Links
- Separate Shower and bath

LET AVAILABLE DATE:

12th October 2025

DEPOSIT: £1,125

MIN TENANCY: Add Text

LET TYPE: Add Text

FURNISH TYPE: Unfurnished

EPC RATING:

D

COUNCIL TAX

BAND:

A

