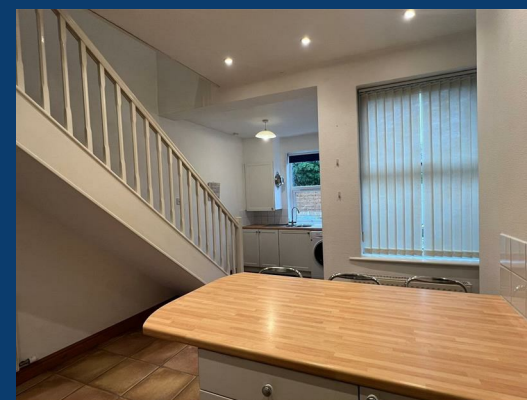
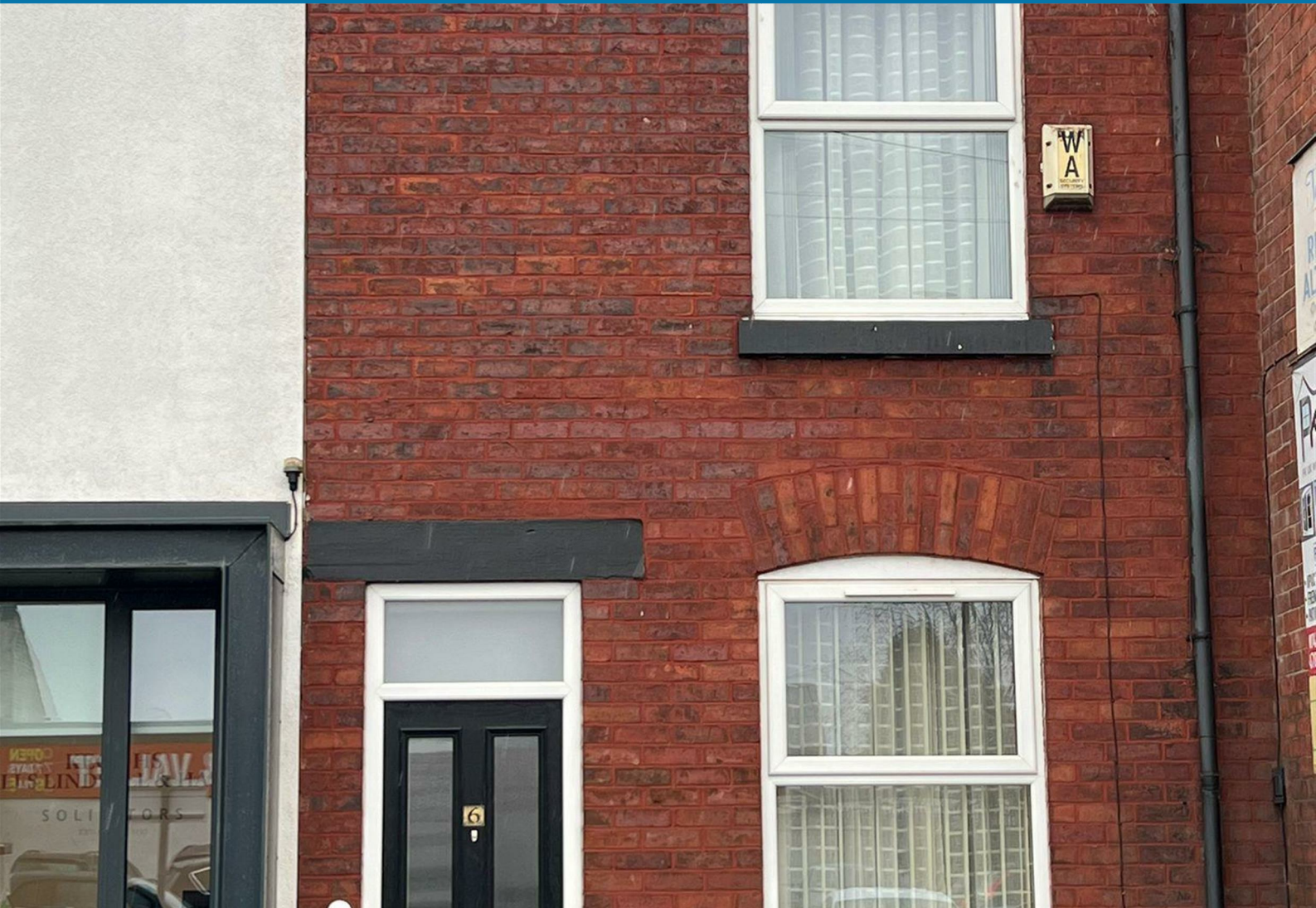




# Commercial Road

Stockport



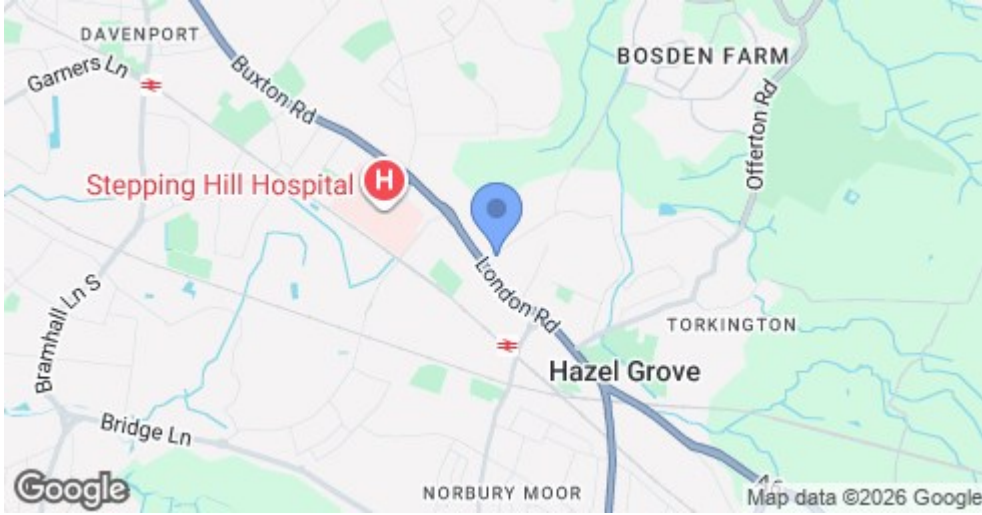
£950




SEND US A MESSAGE



PASSIONATE ABOUT PROPERTY



Energy Efficiency Rating		Current	Potential
Very energy efficient - lower running costs			
(92 plus)	A		
(81-91)	B		84
(69-80)	C		
(55-68)	D	65	
(39-54)	E		
(21-38)	F		
(1-20)	G		
Not energy efficient - higher running costs			
<b>England &amp; Wales</b>		EU Directive 2002/91/EC 	

## PROPERTY DESCRIPTION

Located on Commercial Road in Hazel Grove, Stockport, this well-presented two-bedroom home offers comfortable, modern living in a convenient setting.

The property features a stylish, modern kitchen and a spacious living room with plenty of natural light, creating a warm and welcoming feel. Upstairs, there is one double bedroom and one single bedroom – ideal for a couple, small family, or professionals working from home.

To the rear, there is a yard area providing useful outdoor space. Permit parking is available, and the property includes a fridge and washing machine.

Close to local shops, schools and transport links, this home is well placed for everyday living.

## KEY FEATURES

**LET AVAILABLE DATE:**

26th March 2026

**DEPOSIT:** £1,096

**MIN TENANCY:** Add Text

**LET TYPE:** Add Text

**FURNISH TYPE:** Not specified

**EPC RATING:**

D

**COUNCIL TAX**

**BAND:**

B

