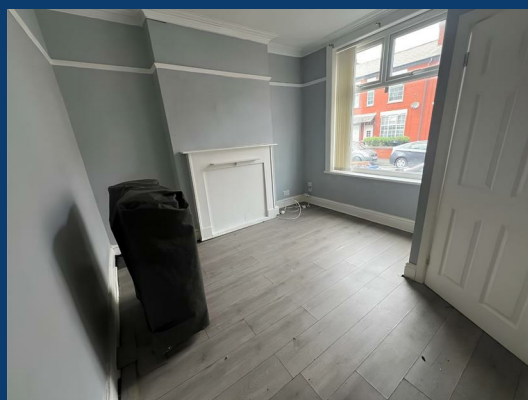
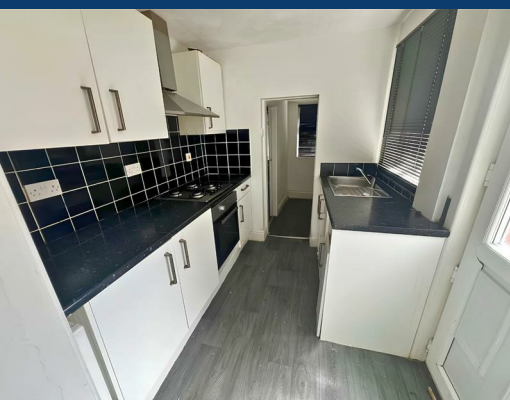




Lowfield Road

Stockport



£1,100 Per month

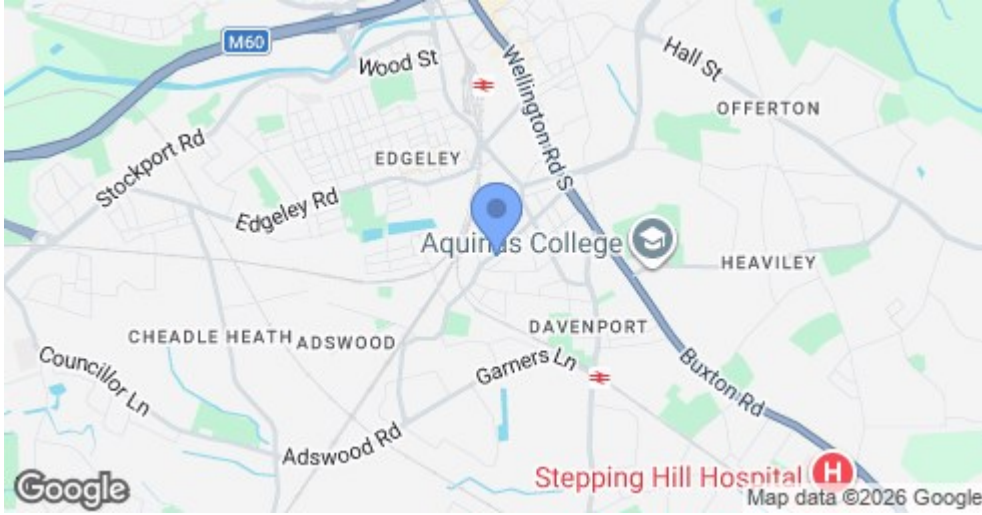
2 | 1 | 2


SEND US A MESSAGE



SPENCER HARVEY

PASSIONATE ABOUT PROPERTY



Energy Efficiency Rating		Current	Potential
Very energy efficient - lower running costs			
(92 plus)	A		
(81-91)	B		85
(69-80)	C		
(55-68)	D	61	
(39-54)	E		
(21-38)	F		
(1-20)	G		
Not energy efficient - higher running costs			
England & Wales		EU Directive 2002/91/EC 	

PROPERTY DESCRIPTION

Located on the popular Lowfield Road in Stockport, this well-presented two bedroom end-terraced home offers comfortable living in a convenient location.

The property features two spacious reception rooms, providing flexible living and dining space, along with a fitted kitchen, separate utility room and a downstairs WC. Upstairs are two well-proportioned bedrooms and a family bathroom.

To the rear is an enclosed private yard, ideal for enjoying outdoor space with minimal maintenance.

Situated close to local shops, schools and excellent transport links, including Stockport town centre and the M60 motorway, the property is well placed for commuters and everyday convenience.

An excellent home for professionals, couples or a small family. Early viewing is highly recommended.

KEY FEATURES

LET AVAILABLE DATE:

20th July 2026

DEPOSIT: £1,269

MIN TENANCY: Add Text

LET TYPE: Add Text

FURNISH TYPE: Not specified

EPC RATING:

D

COUNCIL TAX

BAND:

