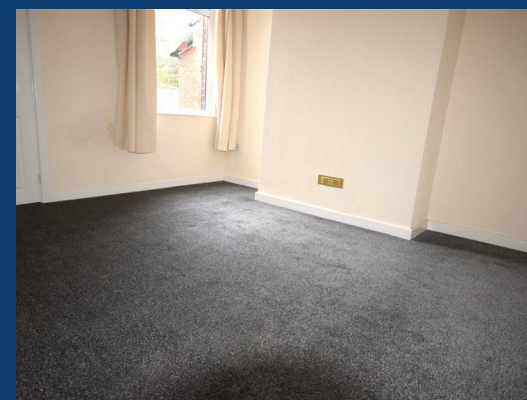




# Ladysmith Street

Stockport



£1,100 Per month

2 | 1 | 2

SEND US A MESSAGE



**SPENCER HARVEY**

PASSIONATE ABOUT PROPERTY



Energy Efficiency Rating		Current	Potential
Very energy efficient - lower running costs			
(92 plus)	<b>A</b>		
(81-91)	<b>B</b>		<b>85</b>
(69-80)	<b>C</b>		
(55-68)	<b>D</b>	<b>66</b>	
(39-54)	<b>E</b>		
(21-38)	<b>F</b>		
(1-20)	<b>G</b>		
Not energy efficient - higher running costs			
<b>England &amp; Wales</b>			EU Directive 2002/91/EC

## PROPERTY DESCRIPTION

Available July ! This spacious Mid Terraced which is situated in a convenient location and close to local amenities.

In brief the property comprises: Lounge, Dining Room, Cellar, Fitted Kitchen, Modern Bathroom Suite with Shower and Two Double Bedrooms. There is also a good sized paved yard and further benefits from Double Glazing and Gas Central Heating.

All in all a good size home located, within close proximity to local schools, shops & transport connections (Stockport Train Station & M60 motorway). Great for professionals and commuters!

Viewing highly recommended. Council Tax Band A.

### KEY FEATURES

- Available July
- Two bedrooms
- Council Tax A
- Perfect Location

**LET AVAILABLE DATE:**

13th July 2026

**DEPOSIT: £1,269**

**MIN TENANCY: Add Text**

**LET TYPE: Add Text**

**FURNISH TYPE: Unfurnished**

**EPC RATING:**

**D**

**COUNCIL TAX**

**BAND:**

**A**

