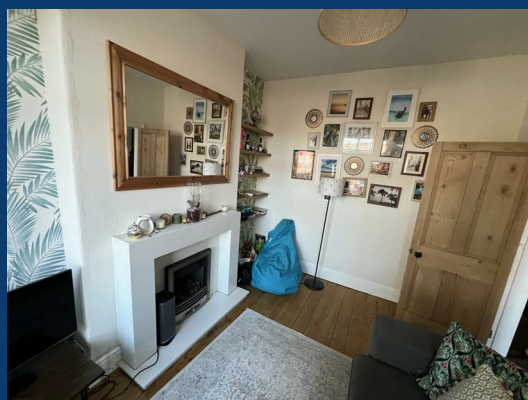




Madras Road

Stockport



£1,250 Per month

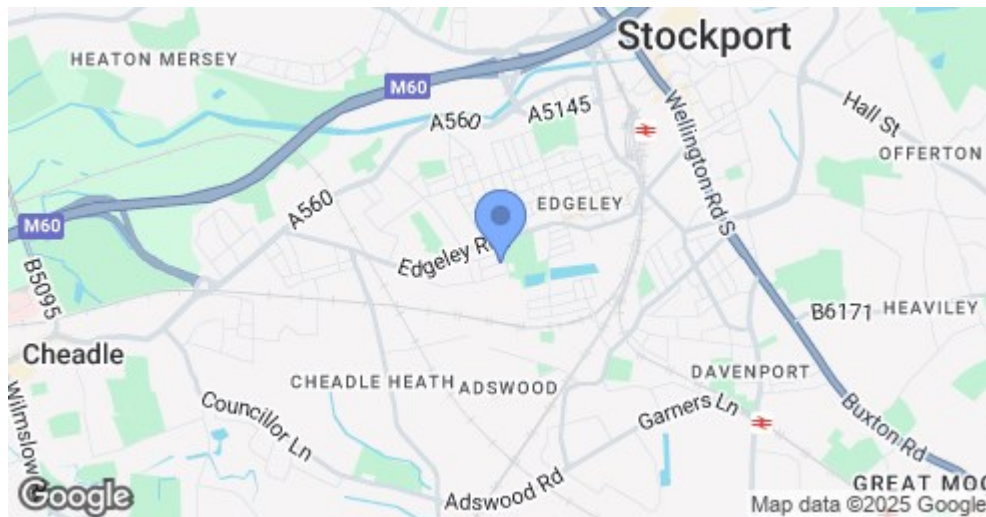
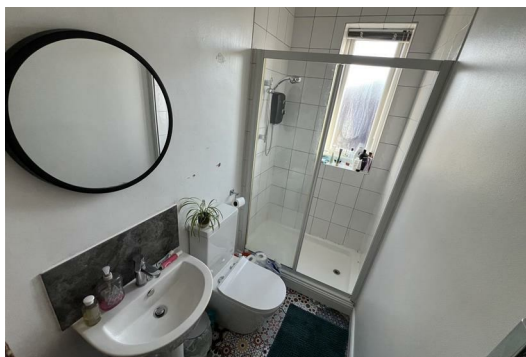
2 | 1 | 1

SEND US A
MESSAGE



SPENCER
HARVEY

PASSIONATE ABOUT PROPERTY



Energy Efficiency Rating		
	Current	Potential
Very energy efficient - lower running costs		
(92 plus) A		85
(81-91) B		
(69-80) C		
(55-68) D	62	
(39-54) E		
(21-38) F		
(1-20) G		
Not energy efficient - higher running costs		
England & Wales		EU Directive 2002/91/EC

PROPERTY DESCRIPTION

This well-presented two-bedroom semi-detached home, available from March, is located in a quiet and sought-after area. The property features a welcoming entrance hall that leads into a spacious living room with a bay window, providing plenty of natural light. The separate dining room offers access to the basement, providing additional storage space.

The modern kitchen is fitted with built-in appliances and opens into a sunroom, offering a bright space with views of the garden.

Upstairs, there are two good-sized bedrooms, both filled with natural light, and a well-maintained shower room with modern fixtures.

The enclosed rear garden provides a private outdoor space with a patio and greenhouse. The property also benefits from ample on-street parking to the front.

This home offers a great opportunity for those looking for a property in a peaceful and desirable location.

KEY FEATURES

- On Street Parking
- Council tax band A
- Furnished (including sofas, beds, wardrobes)
- EPC D
- Sun room

LET AVAILABLE DATE:

21st March 2025

DEPOSIT: £1,442

MIN TENANCY: Add Text

LET TYPE: Add Text

FURNISH TYPE: Part furnished

EPC RATING:

D

COUNCIL TAX

BAND:

A

