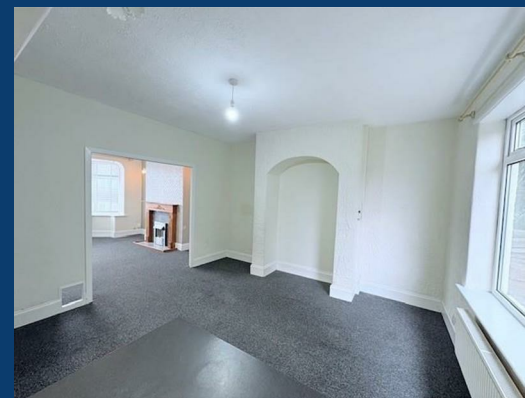




Bean Leach Road

Stockport



£1,295 Per month

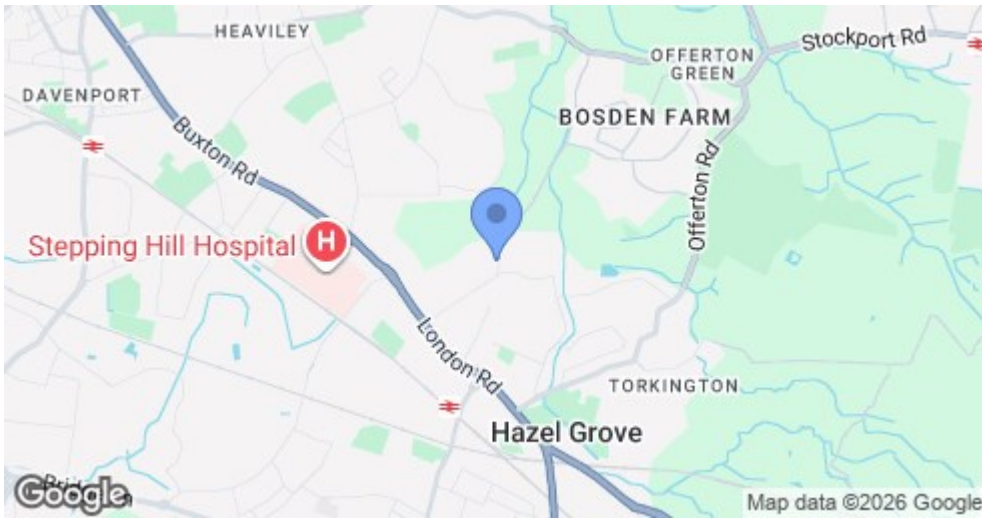
3 | 1 | 1


SEND US A MESSAGE



SPENCER HARVEY

PASSIONATE ABOUT PROPERTY



Energy Efficiency Rating		Current	Potential
Very energy efficient - lower running costs			
(92 plus)	A		
(81-91)	B		84
(69-80)	C		
(55-68)	D	65	
(39-54)	E		
(21-38)	F		
(1-20)	G		
Not energy efficient - higher running costs			
England & Wales			EU Directive 2002/91/EC 

PROPERTY DESCRIPTION

Spencer Harvey is delighted to present this three-bedroom semi-detached home to the rental market, ideally situated in the highly sought-after area of Hazel Grove.

Occupying an elevated position, the property enjoys a pleasant outlook and benefits from a generous rear garden, providing excellent outdoor space for families and professionals alike. On-street parking is available in front of the property.

The accommodation briefly comprises an entrance hallway leading to a spacious open-plan living and dining room, creating a bright and versatile living space. A separate kitchen is accessed from both the dining area and the hallway. On the first floor are three well-proportioned bedrooms, including two doubles and a single bedroom, along with a family bathroom.

Conveniently located close to a range of local amenities, reputable schools, and excellent transport links, the property offers comfortable living in a popular residential setting.

Early viewing is highly recommended.

KEY FEATURES

LET AVAILABLE DATE:

23rd June 2026

DEPOSIT: £1,494

MIN TENANCY: Add Text

LET TYPE: Add Text

FURNISH TYPE: Unfurnished

EPC RATING:

D

COUNCIL TAX

BAND:

C

