



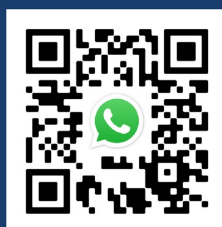
Shaw Heath *Stockport*



£1,150 Per month

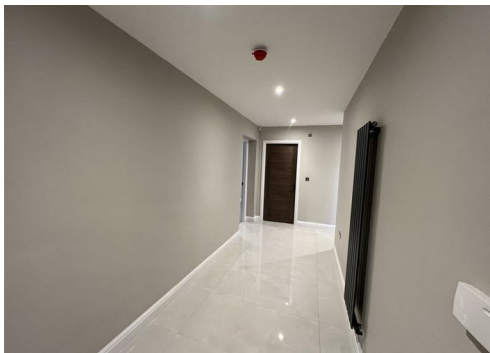


SEND US A
MESSAGE




**SPENCER
HARVEY**

PASSIONATE ABOUT PROPERTY



Energy Efficiency Rating

	Current	Potential
Very energy efficient - lower running costs		
(92 plus) A		
(81-91) B		
(69-80) C		
(55-68) D		
(39-54) E		
(21-38) F		
(1-20) G		
Not energy efficient - higher running costs		
England & Wales	EU Directive 2002/91/EC 	

PROPERTY DESCRIPTION

Brand New Apartments – Carrwood House, Shaw Heath – Available Now

Be the first to move into this exceptional new development. Carrwood House offers a selection of brand new apartments, all finished to a high standard with no expense spared. These stylish, contemporary homes are ready for immediate occupancy and are ideal for professionals, first-time renters, or those looking for a low-maintenance, modern lifestyle.

Each apartment benefits from a bright and spacious open-plan living area, complete with a modern kitchen fitted with integrated appliances, including a fridge freezer and washing machine. The bathrooms are finished to a sleek, contemporary standard, and the interiors are neutrally decorated with quality flooring throughout.

Located in the heart of Shaw Heath, this development is perfectly positioned for commuters. Stockport train station is just a short walk away, offering direct links into Manchester city centre, while the nearby M60 provides excellent road connectivity. Local shops, parks, and amenities are also within easy reach.

Parking options are available on request, and the building has been designed with energy efficiency in mind. These properties are available now and early viewing is highly recommended due to anticipated high

KEY FEATURES

- Available now
- Virtual Tour Available
- Brand new development
- Parking options available
- Ideal for commuters
- Unfurnished - with white goods

LET AVAILABLE DATE:

24th July 2025

DEPOSIT: £1,326

MIN TENANCY: Add Text

LET TYPE: Add Text

FURNISH TYPE: Unfurnished

EPC RATING:

COUNCIL TAX

BAND:

New Build

