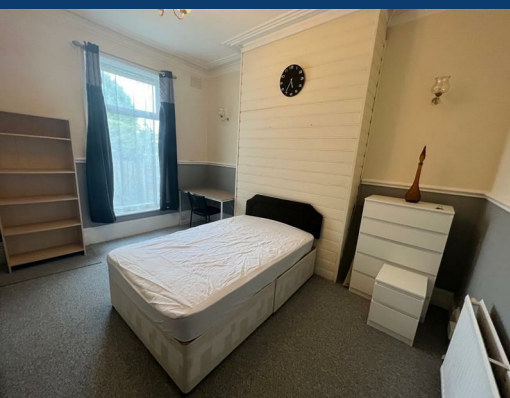




# Shaw Heath Stockport



£575 Per month



SEND US A  
MESSAGE



SPENCER  
HARVEY

PASSIONATE ABOUT PROPERTY





Energy Efficiency Rating		
	Current	Potential
Very energy efficient - lower running costs		
(92 plus) A		
(81-91) B		
(69-80) C		78
(55-68) D		
(39-54) E	54	
(21-38) F		
(1-20) G		
Not energy efficient - higher running costs		
England & Wales	EU Directive 2002/91/EC	

## PROPERTY DESCRIPTION

\*ROOM SHARE ACCOMMODATION\* \*RENT INCLUSIVE OF BILLS\* AVAILABLE SEPTEMBER \*

We are delighted to offer this ground floor double room to rent in this professional house share accommodation! The property is positioned in a perfect location within walking distance of Stockport Railway Station suitable for the regular commuter, shops suitable for daily needs and bus routes direct into Stockport,

Manchester and beyond are also close at hand. This Spacious shared home has a communal living area, a large galley fitted kitchen complete with appliances, shower room (shared) .

Externally there is a shared communal yard area with a space for car parking on a first come first serve basis.

Viewings come highly recommended to fully appreciate the accommodation on offer. Call TODAY to arrange your viewing. Do NOT miss out.

### KEY FEATURES

- Available September
- Furnished Double room
- Ground floor
- Private garden
- Perfect for Manchester commuters

### LET AVAILABLE DATE:

11th September 2025

**DEPOSIT:£663**

**MIN TENANCY: Add Text**

**LET TYPE: Add Text**

**FURNISH TYPE: Furnished**

**EPC RATING:**

E

**COUNCIL TAX**

**BAND:**

C

