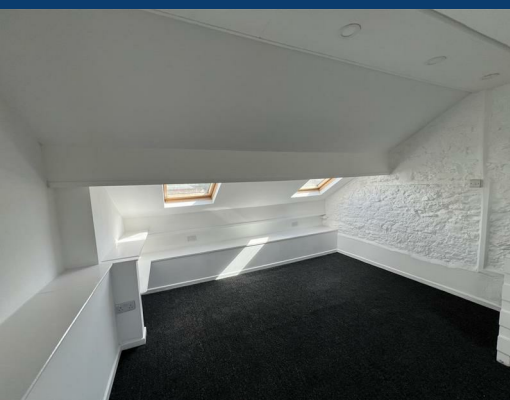




Meadow Street

Hyde



£1,050 Per month

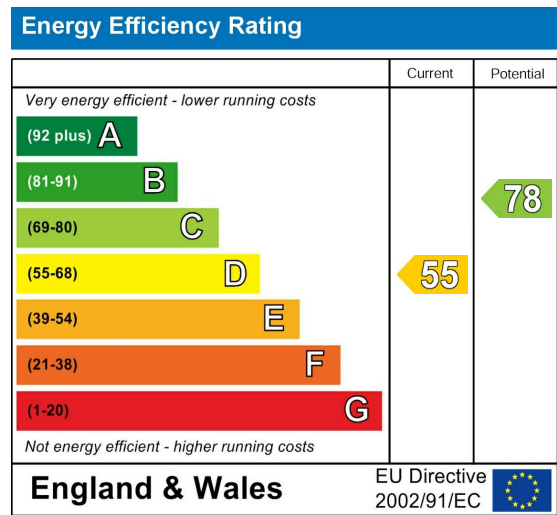


SEND US A
MESSAGE



SPENCER
HARVEY

PASSIONATE ABOUT PROPERTY



PROPERTY DESCRIPTION

This spacious 3-bedroom duplex apartment is now available in the heart of Hyde, offering modern living across two floors with easy access to local amenities, transport links, and green spaces.

Freshly painted throughout, the property boasts a bright and contemporary interior.

The lower floor features a generous living and dining area with neutral décor, providing a fresh, welcoming space to relax or entertain. The kitchen is fitted with modern units and space for a fridge/freezer. Alongside Two bedrooms on the first Floor.

On the second floor the apartment offers a spacious bedroom with skylight windows, this property is perfect for a professional couple or commuters,.

The duplex layout gives the property a house-like feel, with added privacy and space.

There is ample on street parking and some space available for extra parking.

Located close to Hyde town centre, you'll have easy access to local shops, schools, public transport, and the M67 for commuting into Manchester or surrounding areas.

KEY FEATURES

- Available Now
- Duplex Apartment
- Spacious throughout
- Recently Decorated
- EPC D
- Council Tax Band

LET AVAILABLE DATE:

30th June 2025

DEPOSIT:£1,211

MIN TENANCY: Add Text

LET TYPE: Add Text

FURNISH TYPE: Unfurnished

EPC RATING:

D

COUNCIL TAX

BAND:

B

