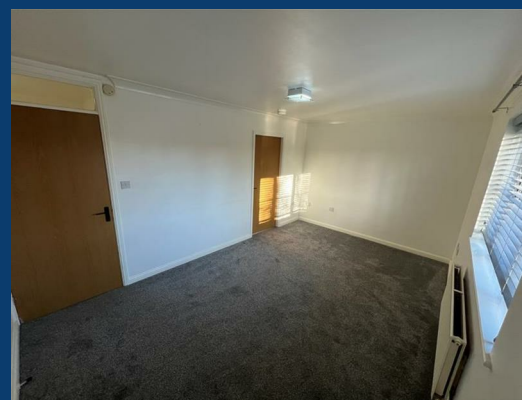




Rosefield Close

Stockport



£1,000 Per month

2 | 1 | 1

SEND US A
MESSAGE



SPENCER
HARVEY

PASSIONATE ABOUT PROPERTY



Energy Efficiency Rating		
	Current	Potential
Very energy efficient - lower running costs		
(92 plus) A		
(81-91) B		
(69-80) C	76	76
(55-68) D		
(39-54) E		
(21-38) F		
(1-20) G		
Not energy efficient - higher running costs		
England & Wales	EU Directive 2002/91/EC	

PROPERTY DESCRIPTION

This newly renovated two-bedroom apartment in Rosefield Close, Stockport, is available to rent.

Located in a quiet and sought-after area, this first-floor apartment offers a spacious living room, perfect for relaxing or entertaining. The property also features two double bedrooms that are filled with natural light and provide ample space.

The modern kitchen is fully equipped, ideal for home cooking, and the contemporary bathroom boasts stylish fittings.

Additional benefits include a private parking space, plenty of storage, and a private entrance for added privacy and security.

The apartment is conveniently located close to local amenities and has excellent transport links, including nearby Davenport Station, making it an ideal choice for professionals or couples seeking a peaceful, well-connected home.

Don't miss the opportunity to make this charming apartment your new home—contact us today to arrange a viewing.

KEY FEATURES

- Available now
- First floor apartment
- EPC C
- Council tax Band A
- Recently Renovated

LET AVAILABLE DATE:

14th March 2025

DEPOSIT: £1,153

MIN TENANCY: Add Text

LET TYPE: Add Text

FURNISH TYPE: Unfurnished

EPC RATING:

C

COUNCIL TAX

BAND:

A

