



Werneth Street

Stockport



£1,000 Per month

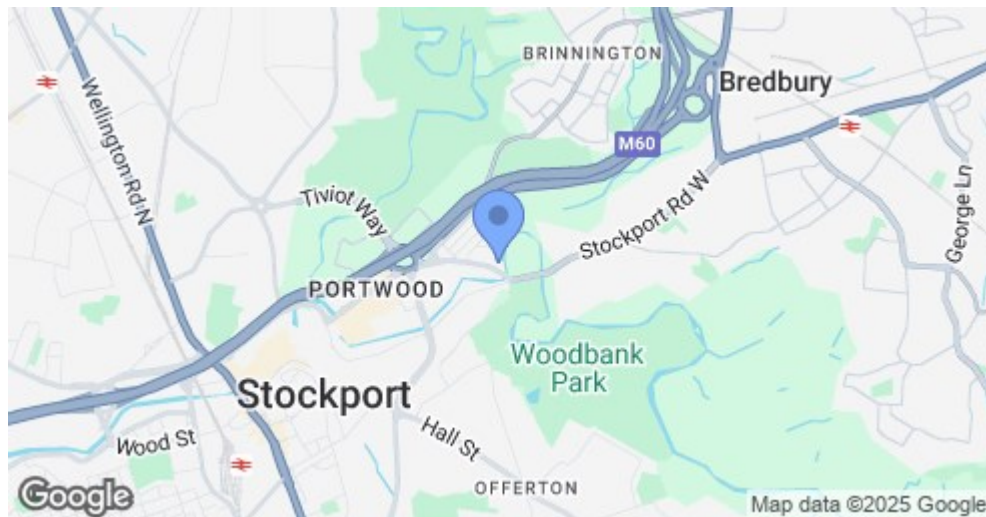
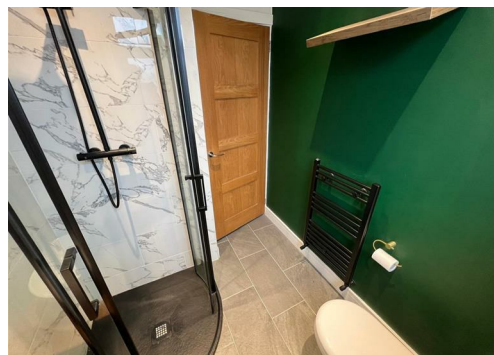
2 | 1 | null

SEND US A
MESSAGE



SPENCER
HARVEY

PASSIONATE ABOUT PROPERTY



Energy Efficiency Rating		
	Current	Potential
Very energy efficient - lower running costs		
(92 plus) A		91
(81-91) B		
(69-80) C		66
(55-68) D		
(39-54) E		
(21-38) F		
(1-20) G		
Not energy efficient - higher running costs		
England & Wales		EU Directive 2002/91/EC

PROPERTY DESCRIPTION

Available NOW - Unfurnished

We are delighted to present this charming 2-bedroom terraced house, in the heart of Stockport Town Centre, offering a contemporary interior with warm wooden flooring downstairs, creating a welcoming atmosphere throughout. Perfectly suited for a small family or young professionals seeking a comfortable and stylish home.

As you step inside, you'll immediately be impressed by the sleek and modern design of the ground floor. The inviting living space boasts warm wooden flooring that not only adds a touch of elegance but also makes maintenance a breeze. The open-plan kitchen dining room is a focal point of the house, featuring ample space for creative cooking and dining with loved ones. Natural light streams through the large windows, creating a welcoming and airy atmosphere.

Upstairs, there is a generously sized double bedroom and a charming single bedroom. The double bedroom offers plenty of space for storage and relaxation, while the single bedroom can easily be transformed into a delightful home office or a comfortable guest room for visitors. There is also a conveniently fitted shower room with modern fixtures and providing a perfect place to unwind after a busy day.

KEY FEATURES

- Available October
- 2 Bedroom House
- Mid Terrace
- Close to Stockport Town Centre
- EPC Rating D
- Council Tax Band A

LET AVAILABLE DATE:

6th November 2025

DEPOSIT: £1,211

MIN TENANCY: Add Text

LET TYPE: Add Text

FURNISH TYPE: Unfurnished

EPC RATING:

D

COUNCIL TAX

BAND:

A



www.spencerharvey.co.uk | lettings@spencerharvey.co.uk | 0161 480 8888

